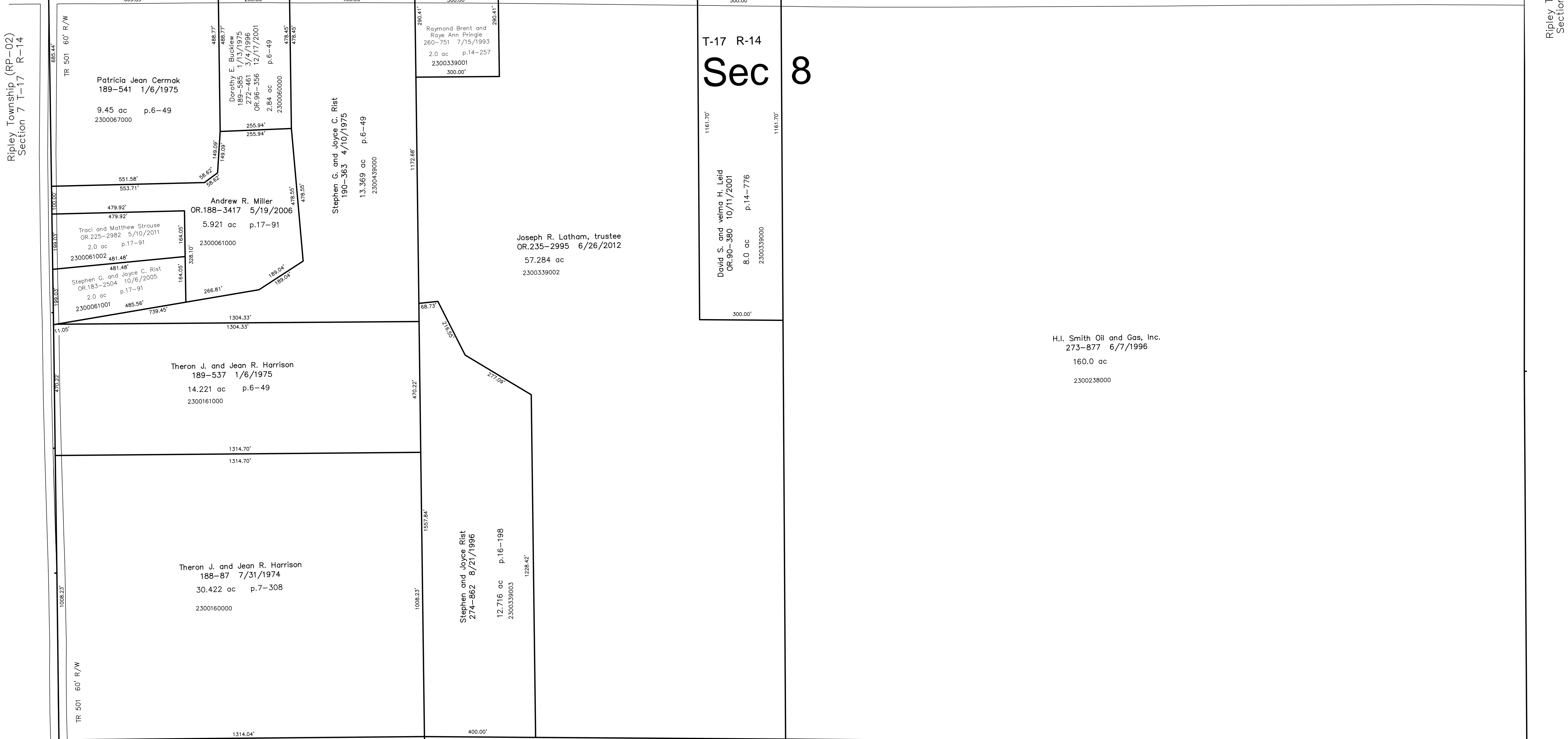


Ripley Township (RP-02)
Section 7 T-17 R-14

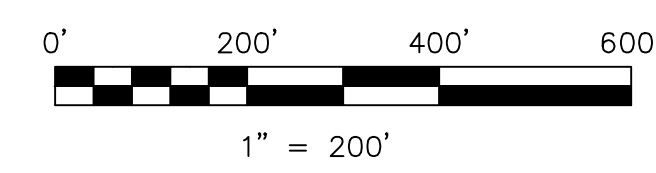
Ripley Township (RP-12)
Section 9 T-17 R-14



Last Revision: 11/28/2012

nw 1/4 Windy Knob Allotment
Plat 18-240 Platted 3/26/2002

T-17, R-14, Section 8
Ripley Twp.
Holmes County, Ohio



S.F.T. new survey required
for next transfer

LET IT BE KNOWN, THIS MAP HAS BEEN PREPARED AS A REFERENCE
GUIDE TO PROPERTY OWNERSHIP. WE BELIEVE THIS INFORMATION TO
BE CORRECT AND CURRENT, HOWEVER IT IS NOT INTENDED FOR ANY
LEGAL USE, WHETHER IT BE IN SALES, TRANSFERS, TRADES, LEASES
OF ANY TYPE, ETC., AND DO NOT ACCEPT RESPONSIBILITY FOR
ERRORS OF ANY NATURE OR OMISSIONS CONTAINED HEREIN.

RP-07