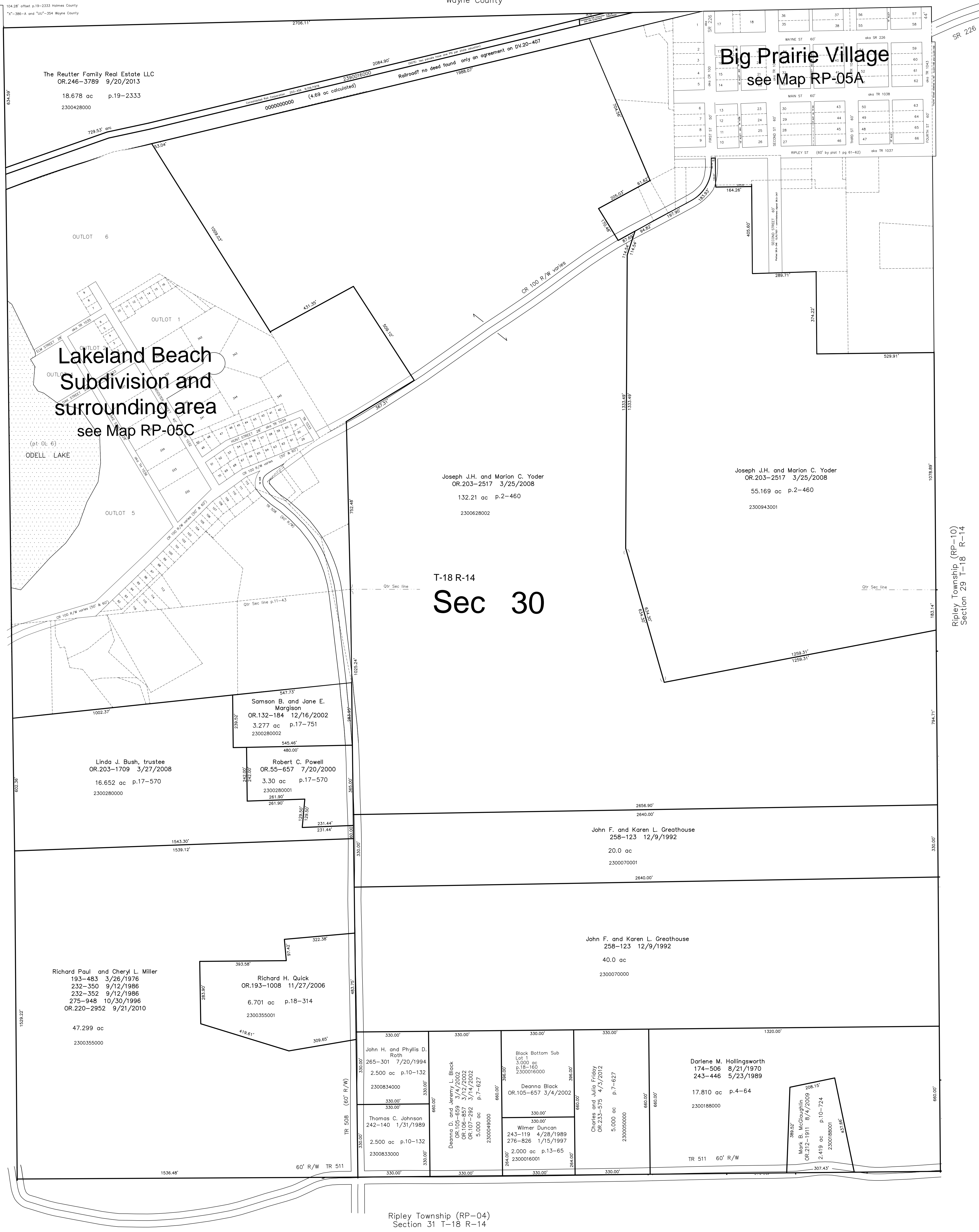


Washington Township
Section 25 T-20 R-15
Lakeland Beach Subdivision (W-30A)

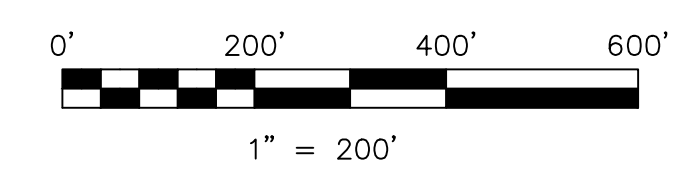
Washington Township (W-30)
Section 25 T-20 R-15

Ripley Township (RP-10)
Section 29 T-18 R-14



s part Black Bottom Subdivision
Plat 18-160 Platted 12/21/2001

Ripley Township (RP-04)
Section 31 T-18 R-14



S.F.T. new survey required
for next transfer

LET IT BE KNOWN, THIS MAP HAS BEEN PREPARED AS A REFERENCE GUIDE TO PROPERTY OWNERSHIP. WE BELIEVE THIS INFORMATION TO BE CORRECT AND CURRENT. HOWEVER, IT IS NOT INTENDED FOR ANY LEGAL USE, WHETHER IT BE IN SALES, TRANSFERS, TRADES, LEASES OF ANY TYPE, ETC., AND DO NOT ACCEPT RESPONSIBILITY FOR ERRORS OF ANY NATURE OR OMISSIONS CONTAINED HEREIN.

Last Revision: 9/20/2013

T-18, R-14, Section 30
Ripley Twp.
Holmes County, Ohio

RP-05