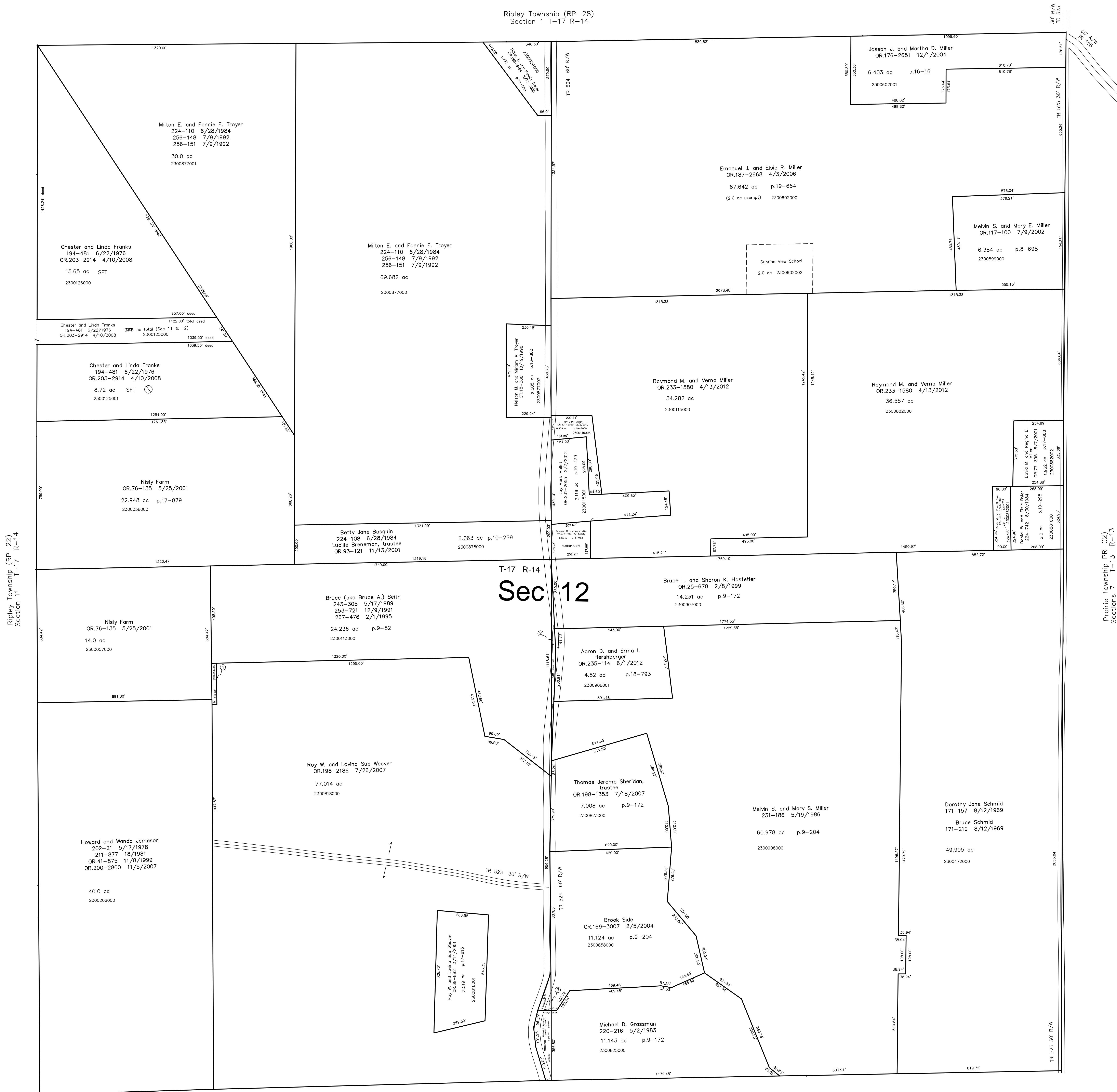


Ripley Township (RP-28)
Section 1 T-17 R-14



Ripley Township (RP-22)
Section 11 T-17 R-14

Pacific Township (RP-02)
Sections 7 T-13 R-13

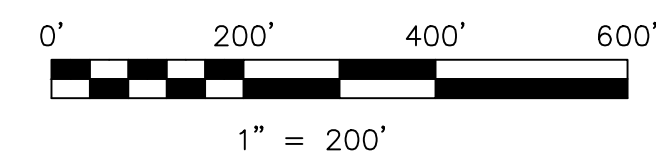
T-17 R-14
Sec 12

- 2300205000 ① Howard (aka Howard C.) and Wanda Jameson
202-21 5/17/1978
211-877 1/8/1981
OR.41-875 11/8/1999
OR.200-2800 11/5/2007
0.122 ac p.7-672
- 2300112000 ② Bruce (aka Bruce A.) Seith
243-305 5/17/1989
253-721 12/9/1991
267-476 2/1/1995
0.312 ac p.9-82
- 2300828000 ③ Brook Side
OR.169-3007 2/5/2004
0.156 ac p.9-204

Ripley Township (RP-26)
Section 13 T-17 R-14

Last Revision: 6/1/2012

T-17, R-14, Section 12
Ripley Twp.
Holmes County, Ohio



S.F.T. new survey required
for next transfer

LET IT BE KNOWN, THIS MAP HAS BEEN PREPARED AS A REFERENCE GUIDE TO PROPERTY OWNERSHIP. WE BELIEVE THIS INFORMATION TO BE CORRECT AND CURRENT, HOWEVER IT IS NOT INTENDED FOR ANY LEGAL USE, WHETHER IT BE IN SALES, TRANSFERS, TRUSTS, LEASES OF ANY TYPE, ETC., AND DO NOT ACCEPT RESPONSIBILITY FOR ERRORS OF ANY NATURE OR OMISSIONS CONTAINED HEREIN.

RP-27