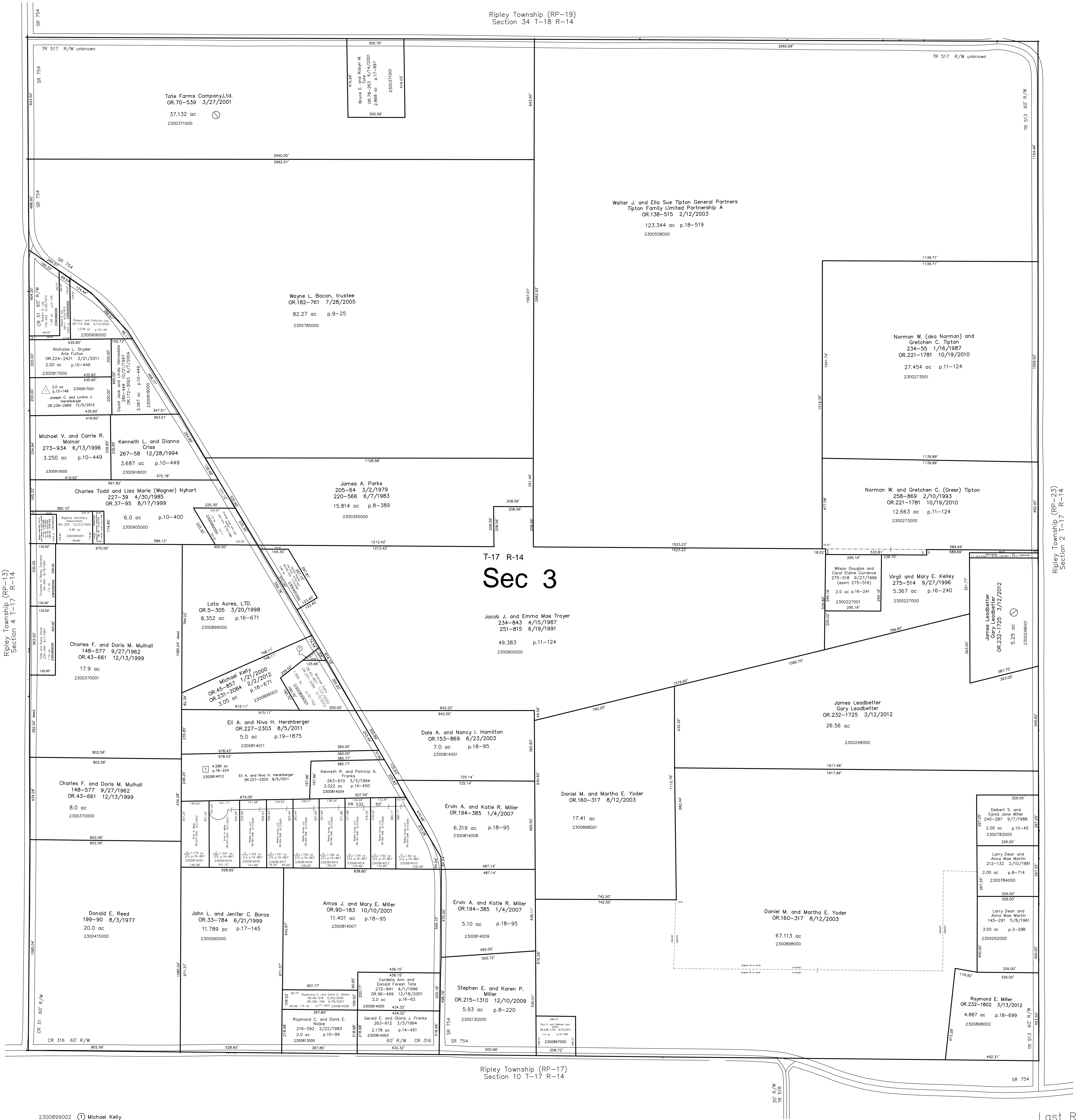


Ripley Township (RP-19)
Section 34 T-18 R-14



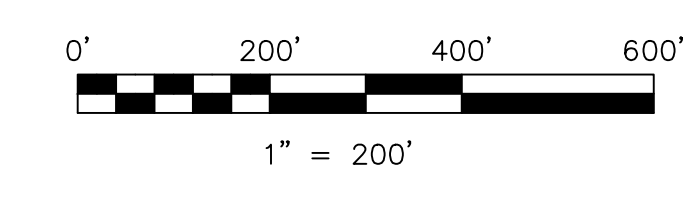
Ripley Township (RP-13)
Section 4 T-17 R-14

Ripley Township (RP-23)
Section 2 T-17 R-14

T-17 R-14
Sec 3

2300899002 Michael Kelly
OR.45-857 1/21/2000
OR.231-2084 2/2/2012
0.098 ac p.16-162

- △ DeFelic Allotment No.1
Plot 13-148 Platted 1/23/1992
- Briar Knoll
Plot 16-224 Platted 3/8/2002
- ☆ Reddy Acres Subdivision
Plot 19-867 Platted 11/15/2006
Maintenance Agreement OR.193-307 11/15/2006



S.F.T. new survey required
for next transfer

LET IT BE KNOWN, THIS MAP HAS BEEN PREPARED AS A REFERENCE
GUIDE TO PROPERTY OWNERSHIP. WE BELIEVE THIS INFORMATION TO
BE CORRECT AND CURRENT. HOWEVER IT IS NOT INTENDED FOR ANY
LEGAL USE, WHETHER IT BE IN SALES, TRANSFERS, TRADES, LEASES
OR ANY TYPE, ETC., AND DO NOT ACCEPT RESPONSIBILITY FOR
ERRORS OF ANY NATURE OR OMISSIONS CONTAINED HEREIN.

Last Revision: 12/5/2012

**T-17, R-14, Section 3
Ripley Twp.
Holmes County, Ohio**

RP-18