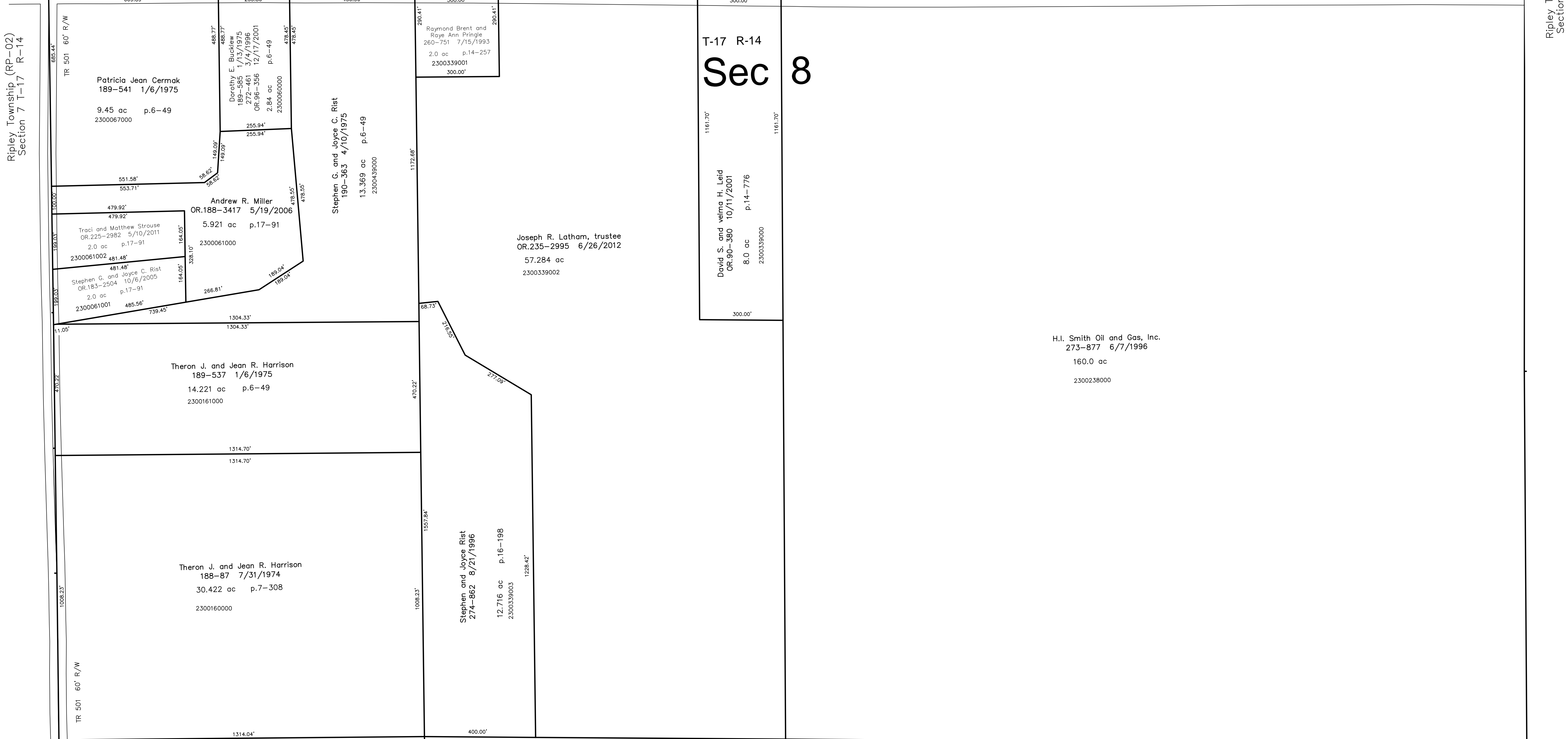


Ripley Township (RP-02)
Section 7 T-17 R-14

Ripley Township (RP-12)
Section 9 T-17 R-14

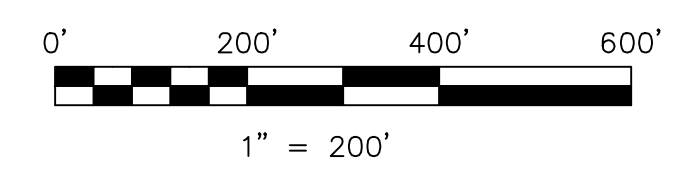
Sec 8



Last Revision: 11/28/2012

**T-17, R-14, Section 8
Ripley Twp.
Holmes County, Ohio**

△ Windy Knob Allotment
Plat 18-240 Platted 3/26/2002



S.F.T. new survey required
for next transfer

LET IT BE KNOWN, THIS MAP HAS BEEN PREPARED AS A REFERENCE GUIDE TO PROPERTY OWNERSHIP. WE BELIEVE THIS INFORMATION TO BE CORRECT AND CURRENT, HOWEVER IT IS NOT INTENDED FOR ANY LEGAL USE, WHETHER IT BE IN SALES, TRANSFERS, TRADES, LEASES OF ANY TYPE, ETC., AND DO NOT ACCEPT RESPONSIBILITY FOR ERRORS OF ANY NATURE OR OMISSIONS CONTAINED HEREIN.

RP-07