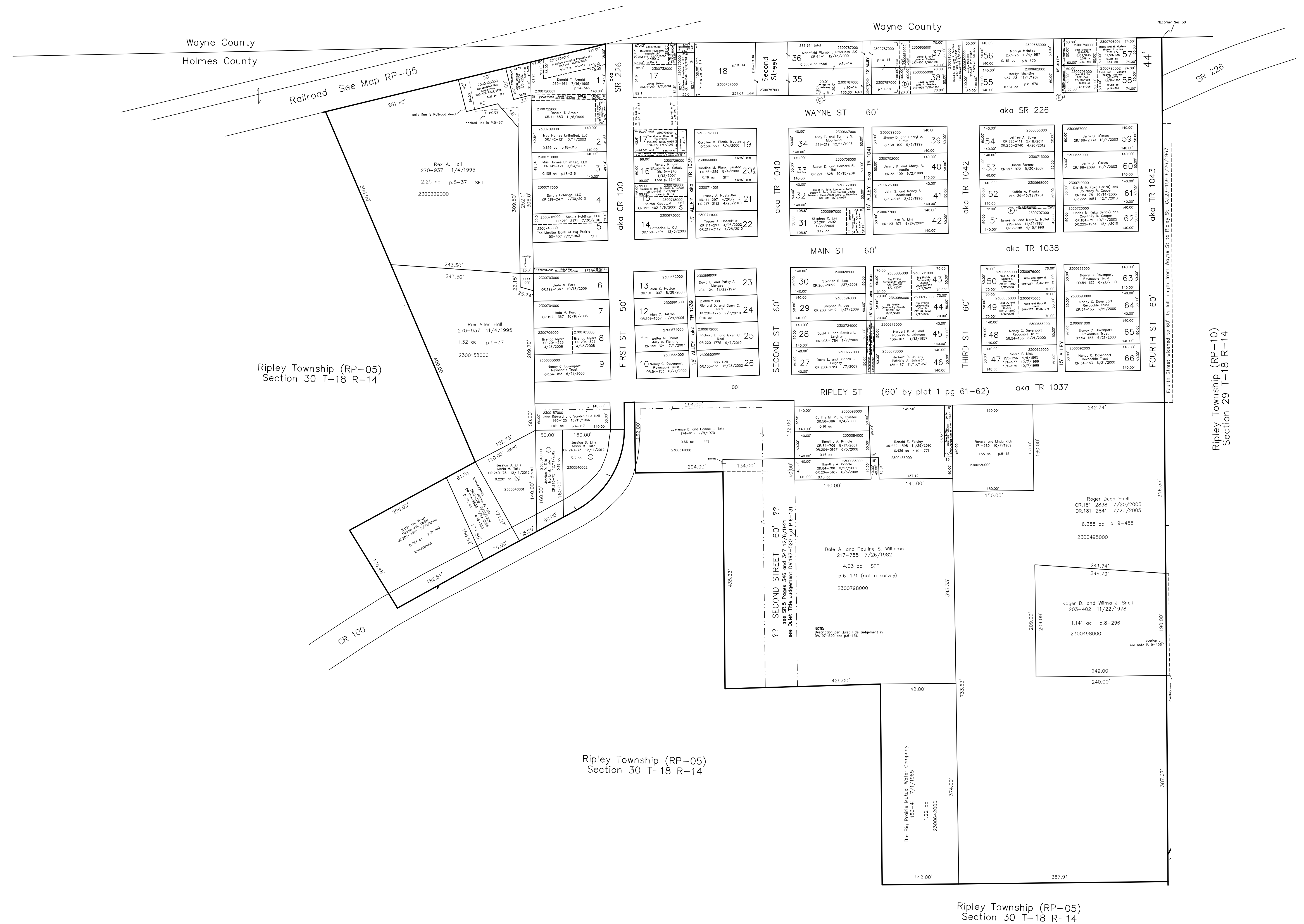


- 2300731000 (A) Chris Steiner  
OR 171-280 3/31/2004  
0.013 ac
- 2300669000 (B) Sunflower Investments, LLC  
OR 176-1599 11/17/2004  
0.013 ac
- 2390015000 (C) United Telephone Company of Ohio  
166-121 4/5/1988  
0.0092 ac
- 2300654000 (D) David E. and June A. Peebles  
247-955 7/20/1990
- 2300686000 (E) Marilyn McIntire  
237-23 11/4/1987
- 2300685000 0.014 ac total p.8-579
- 2300668000 (F) Kathie A. Franks  
215-464 11/24/1981



Original Town Plat Recorded in Plat Vol. 1 Pages 61 and 62  
Lots 1 to 26 are fractional (no measurements given)  
Lots 27 to 66 are 50 ft wide and 140 ft long

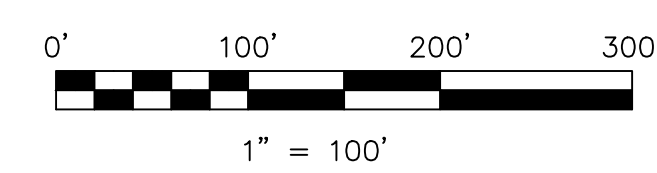
NOTE: A Petition to Vacate the following Streets & Alleys was found. However, a Resolution to vacate them was not.  
Commissioner's Journal Book 20 pages 554 & 557 8/1/55

- 1) alley from Wayne St. to county line between Lots 35, 36, 37, 38
- 2) Second Street from Wayne Street to county line between Lots 18, 35, 36
- 3) street south from south line of Wayne Street to north line Lot 16 between Lots 17, 19, 20 & alley
- 4) alley east from First Street to west line Lots 19 & 20, north by Lot 17, south by Lot 16
- 5) alley from north line Lot 16 to south line Lot 16, west by Lot 16, east by Lots 20 & 21

NOTE: Resolutions were passed to Vacate Streets & Alleys as follows:

- Commissioner's Journal Book 22 page 198 9/17/1962  
"Being that portion of 3rd Street lying between the intersection of 3rd and Wayne Streets and the northern most end of 3rd Street and Abutting on Lots 37 and 38 on the West and 55 and 56 on the East."
- Commissioner's Journal Book 22 Page 184 7/23/1962  
"... being that portion of a 15 foot alley lying between Main Street and Ripley Street ... as abutts lots 45 and 46 ... on the West thereof and also abutts lots 28 and 27 ... on the East side thereof. And being so much of said alley as extends from Ripley Street to the south, north to the Northern most point of said lots 45 and 28."

S.F.T. new survey required for next transfer



LET IT BE KNOWN, THIS MAP HAS BEEN PREPARED AS A REFERENCE GUIDE TO PROPERTY OWNERSHIP. WE BELIEVE THIS INFORMATION TO BE CORRECT AND CURRENT. HOWEVER, IT IS NOT INTENDED FOR ANY LEGAL USE, WHETHER IT BE IN SALES, TRANSFERS, TRADES, LEASES OF ANY TYPE, ETC., AND DO NOT ACCEPT RESPONSIBILITY FOR ERRORS OF ANY NATURE OR OMISSIONS CONTAINED HEREIN.

Last Revision: 12/11/2012

unincorporated  
Village of Big Prairie  
and  
NE part Sec 30, T-18, R-14  
Ripley Twp.  
Holmes County, Ohio

**RP-05A**