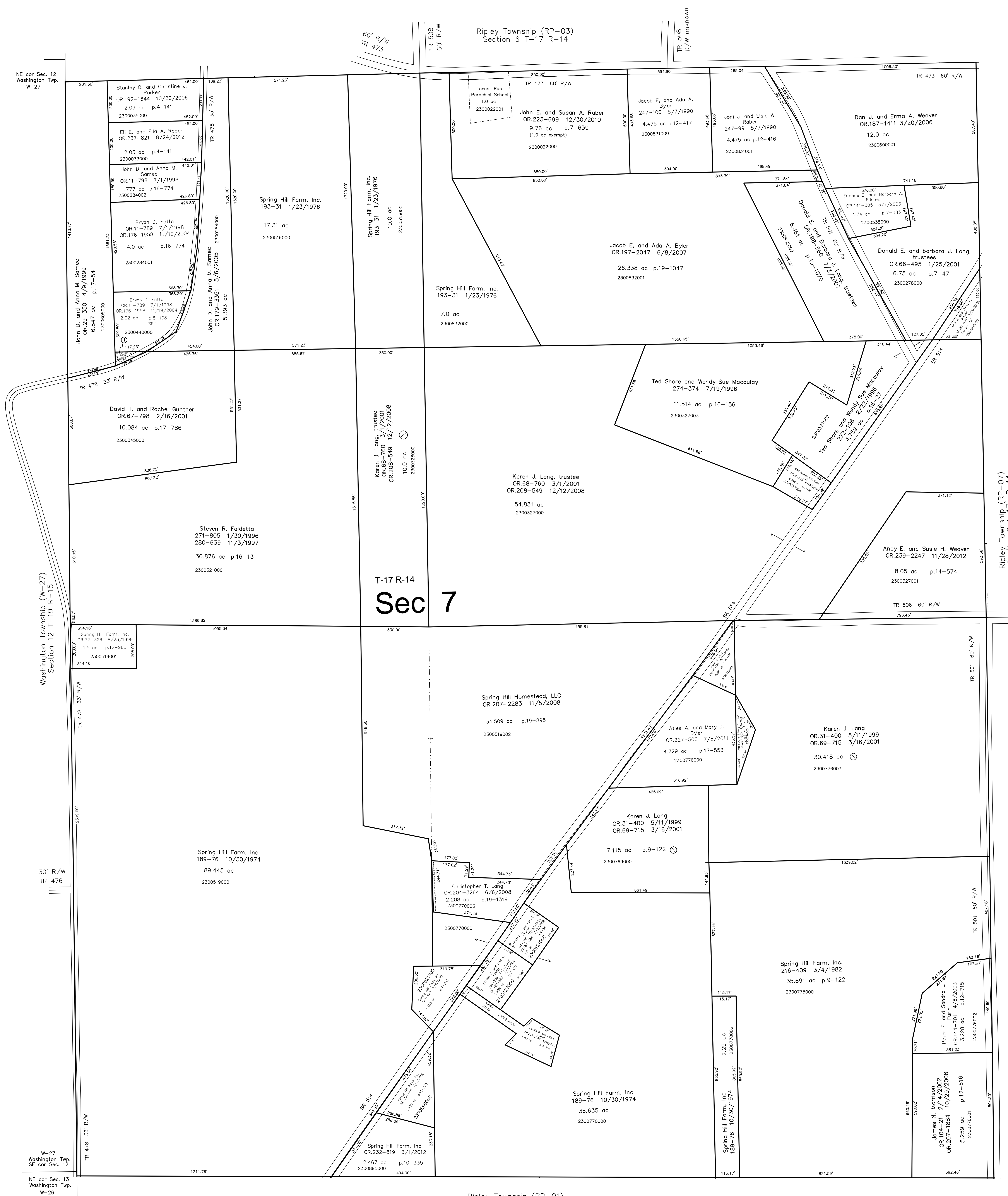


2300321001  
 Bryan D. Folta  
 OR.11-800 7/1/1998  
 OR.176-1958 11/19/2004  
 0.115 ac p.16-12

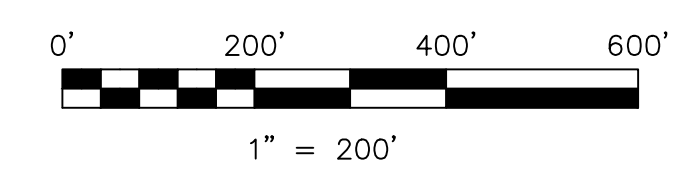


T-17 R-14  
**Sec 7**

Ripley Township (RP-01)  
 Section 18 T-17 R-14

Last Revision: 11/28/2012

**T-17, R-14, Section 7  
 Ripley Twp.  
 Holmes County, Ohio**



S.F.T. new survey required  
 for next transfer

LET IT BE KNOWN, THIS MAP HAS BEEN PREPARED AS A REFERENCE GUIDE TO PROPERTY OWNERSHIP. WE BELIEVE THIS INFORMATION TO BE CORRECT AND CURRENT. HOWEVER, IT IS NOT INTENDED FOR ANY LEGAL USE, WHETHER IT BE IN SALES, TRANSFERS, TRADES, LEASES OF ANY TYPE, ETC., AND DO NOT ACCEPT RESPONSIBILITY FOR ERRORS OF ANY NATURE OR OMISSIONS CONTAINED HEREIN.

**RP-02**