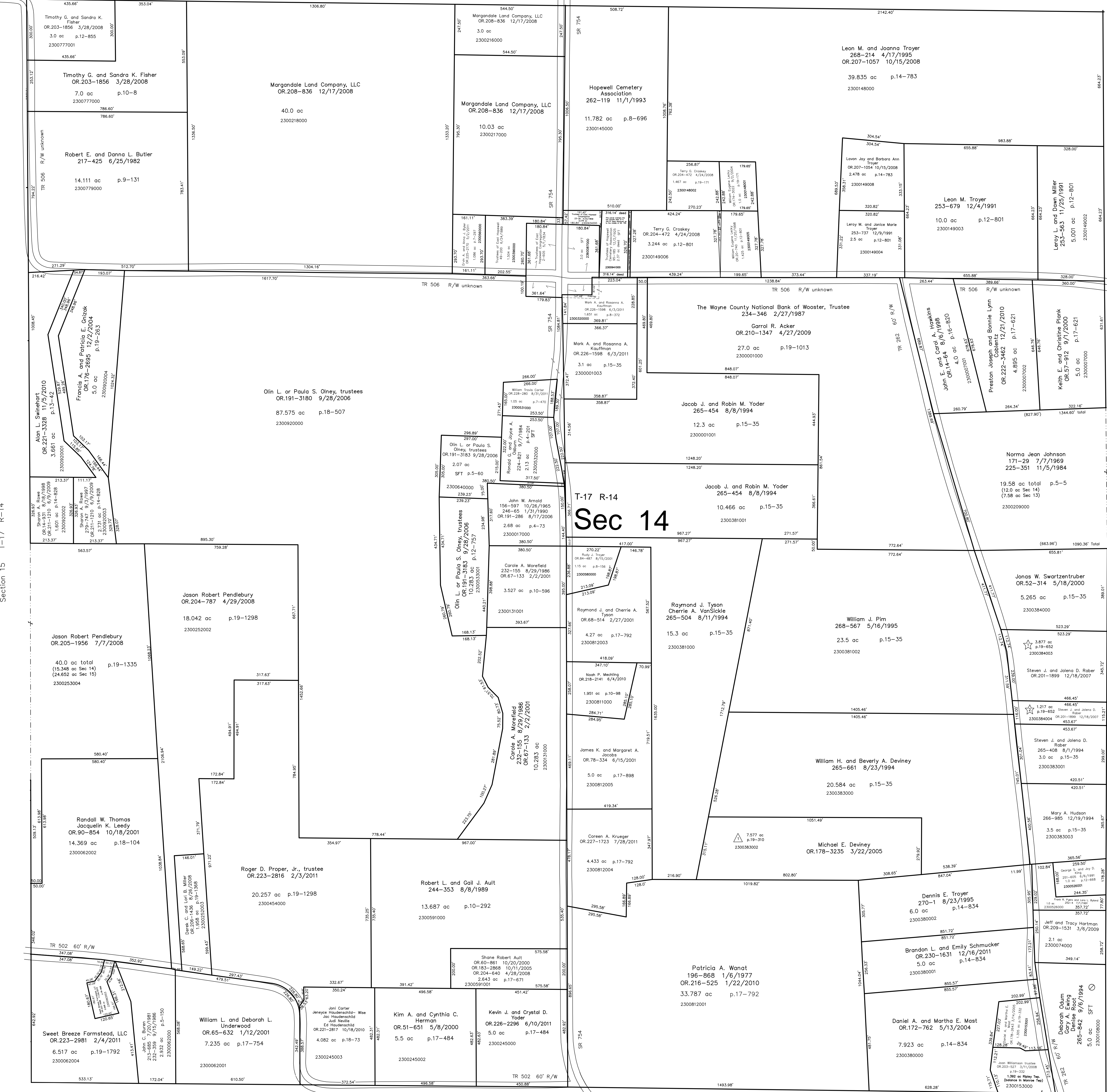


40' R/W  
TR 506

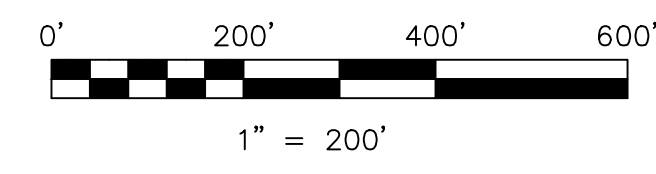
Ripley Township (RP-16)  
Section 15 T-17 R-14

Ripley Township (RP-26)  
Section 13 T-17 R-14



Monroe Township (M-13)  
Section 23 T-17 R-14

- △ Generic Acres Subdivision  
Plat 19-310 Platted 1/27/2005
- ☆ Hudson Hills Subdivision  
Plat 19-652 Platted 3/15/2006



S.F.T. new survey required  
for next transfer

LET IT BE KNOWN, THIS MAP HAS BEEN PREPARED AS A REFERENCE GUIDE TO PROPERTY OWNERSHIP. WE BELIEVE THIS INFORMATION TO BE CORRECT AND CURRENT, HOWEVER IT IS NOT INTENDED FOR ANY LEGAL USE, WHETHER IT BE IN SALES, TRANSFERS, TRADES, LEASES OF ANY TYPE, ETC., AND DO NOT ACCEPT RESPONSIBILITY FOR ERRORS OF ANY NATURE OR OMISSIONS CONTAINED HEREIN.

Last Revision: 12/16/2011

T-17, R-14, Section 14  
Ripley Twp.  
Holmes County, Ohio

# RP-21