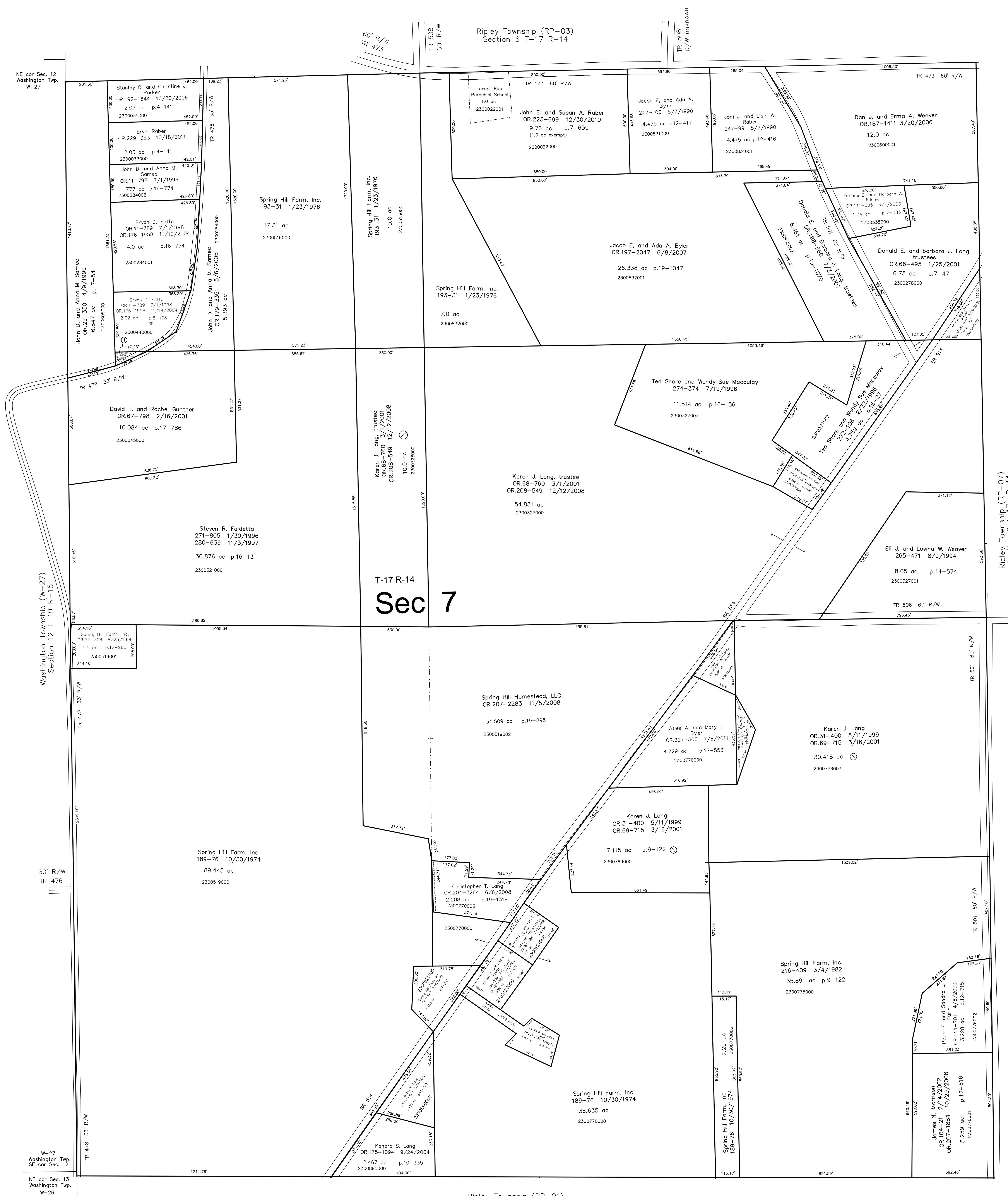
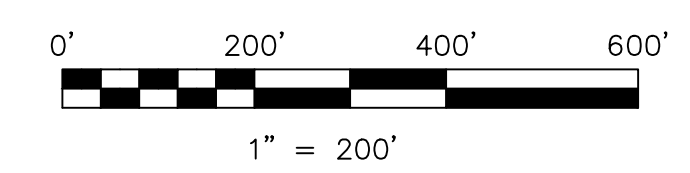


2300321001  
Bryan D. Folta  
OR 11-800 7/1/1998  
OR 176-1958 11/19/2004  
0.115 ac p.16-12



T-17 R-14  
**Sec 7**

Ripley Township (RP-01)  
Section 18 T-17 R-14



S.F.T. new survey required  
for next transfer

LET IT BE KNOWN, THIS MAP HAS BEEN PREPARED AS A REFERENCE  
GUIDE TO PROPERTY OWNERSHIP. WE BELIEVE THIS INFORMATION TO  
BE CORRECT AND CURRENT. HOWEVER, IT IS NOT INTENDED FOR ANY  
LEGAL USE, WHETHER IT BE IN SALES, TRANSFERS, TRADES, LEASES  
OF ANY TYPE, ETC., AND DO NOT ACCEPT RESPONSIBILITY FOR  
ERRORS OF ANY NATURE OR OMISSIONS CONTAINED HEREIN.

Last Revision: 10/18/2011

**T-17, R-14, Section 7  
Ripley Twp.  
Holmes County, Ohio**

**RP-02**