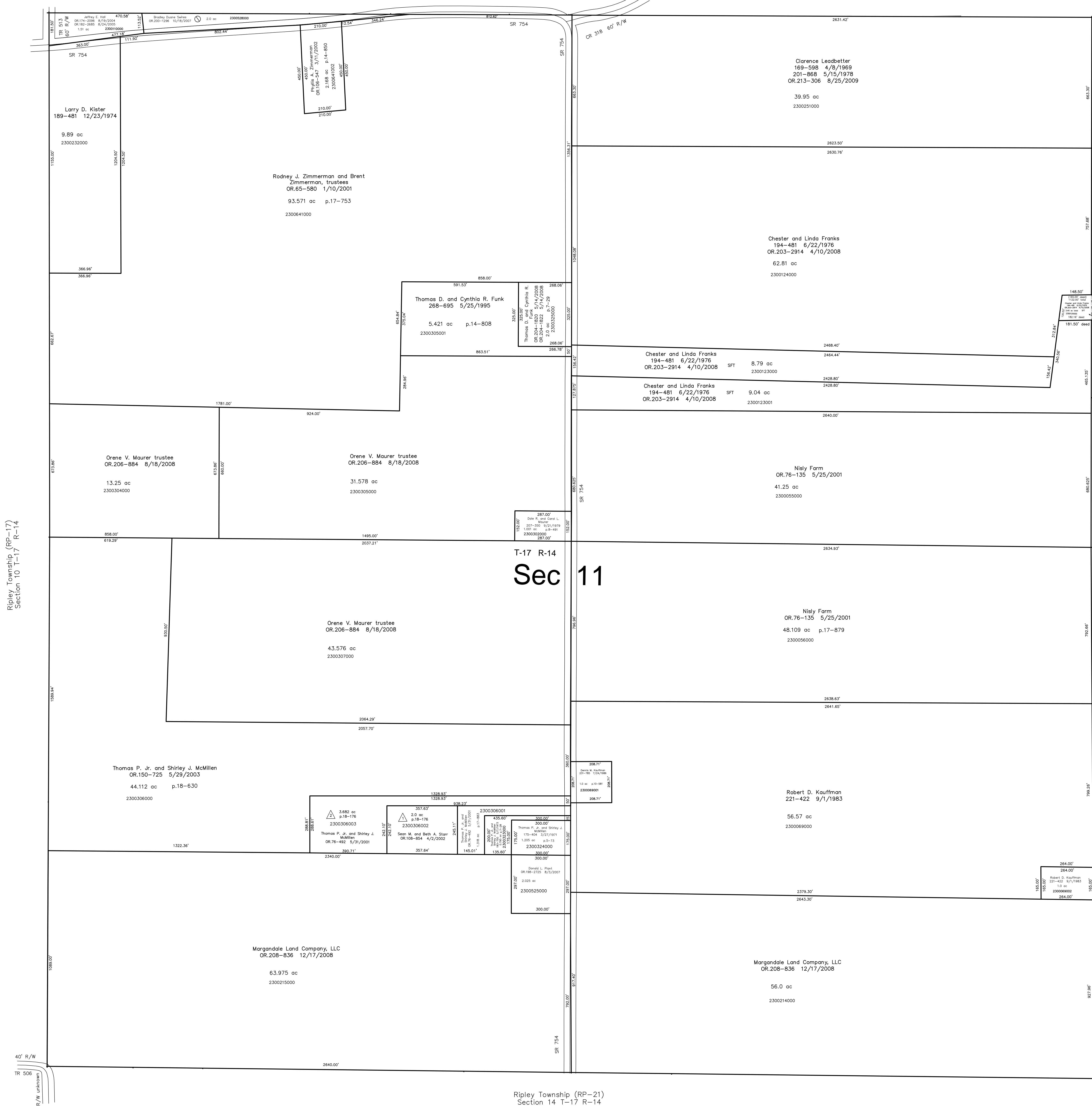


Ripley Township (RP-23)  
Section 2 T-17 R-14



Ripley Township (RP-17)  
Section 10 T-17 R-14

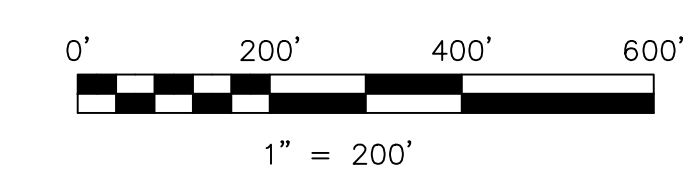
Ripley Township (RP-27)  
Section 12 T-17 R-14

Ripley Township (RP-21)  
Section 14 T-17 R-14

Last Revision: 8/25/2009

**T-17, R-14, Section 11**  
**Ripley Twp.**  
**Holmes County, Ohio**

△ Mactour Subdivision  
Plot 18-176 Plotted 1/9/2002



S.F.T. new survey required  
for next transfer

LET IT BE KNOWN, THIS MAP HAS BEEN PREPARED AS A REFERENCE GUIDE TO PROPERTY OWNERSHIP. WE BELIEVE THIS INFORMATION TO BE CORRECT AND CURRENT. HOWEVER, IT IS NOT INTENDED FOR ANY LEGAL USE, WHETHER IT BE IN SALES, TRANSFERS, TRADES, LEASES OF ANY TYPE, ETC., AND DO NOT ACCEPT RESPONSIBILITY FOR ERRORS OF ANY NATURE OR OMISSIONS CONTAINED HEREIN.

**RP-22**