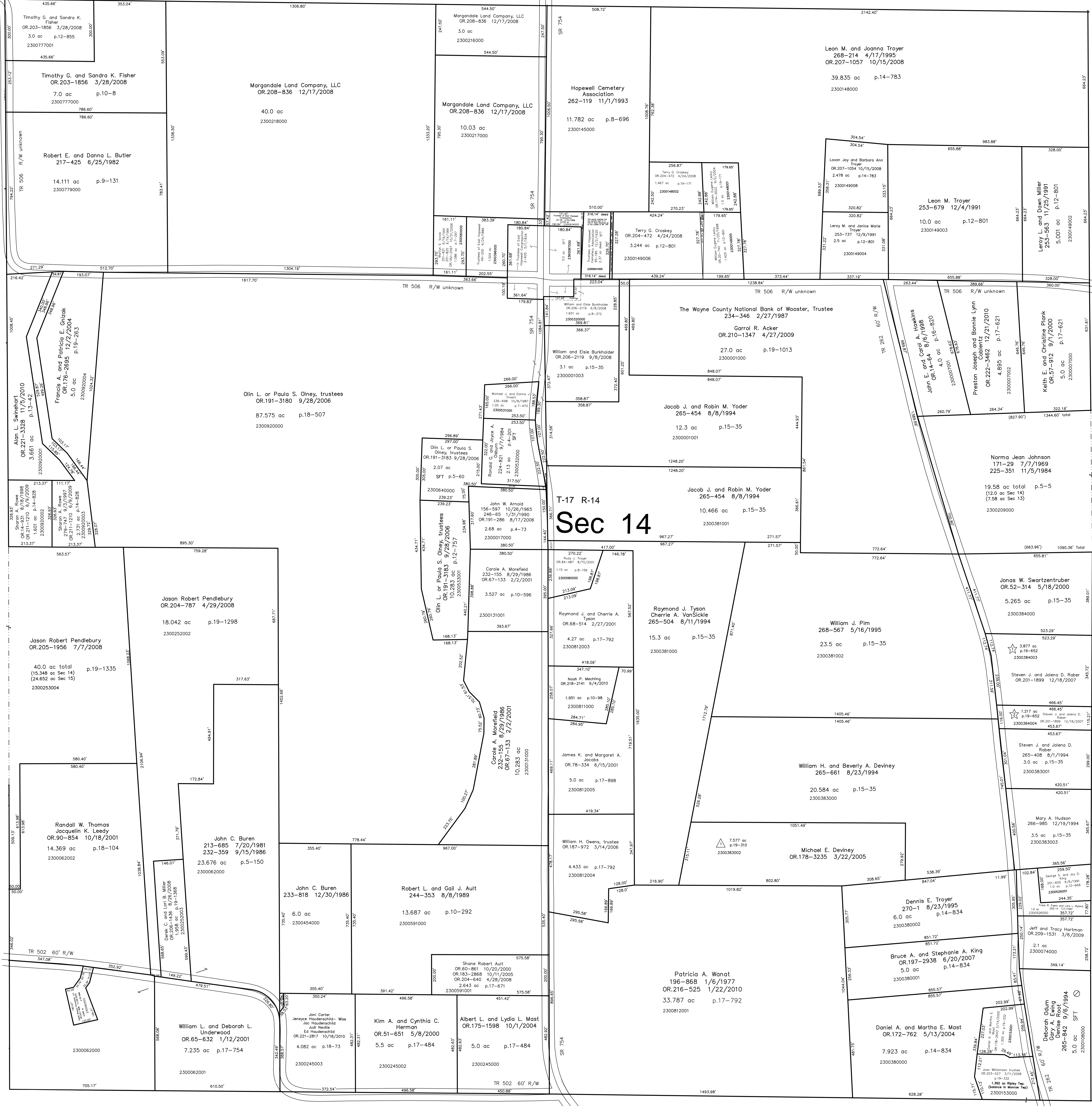


40' R/W
TR 506

Ripley Township (RP-16)
Section 15 T-17 R-14

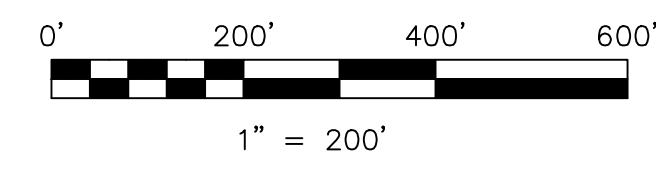
Ripley Township (RP-26)
Section 13 T-17 R-14



Monroe Township (M-13)
Section 23 T-17 R-14

Last Revision: 12/21/2010

- △ Generic Acres Subdivision
Plat 19-310 Platted 1/27/2005
- ☆ Hudson Hills Subdivision
Plat 19-652 Platted 3/15/2006



S.F.T. new survey required
for next transfer

LET IT BE KNOWN, THIS MAP HAS BEEN PREPARED AS A REFERENCE GUIDE TO PROPERTY OWNERSHIP. WE BELIEVE THIS INFORMATION TO BE CORRECT AND CURRENT, HOWEVER IT IS NOT INTENDED FOR ANY LEGAL USE, WHETHER IT BE IN SALES, TRANSFERS, TRADES, LEASES OF ANY TYPE, ETC., AND DO NOT ACCEPT RESPONSIBILITY FOR ERRORS OF ANY NATURE OR OMISSIONS CONTAINED HEREIN.

T-17, R-14, Section 14
Ripley Twp.
Holmes County, Ohio

RP-21