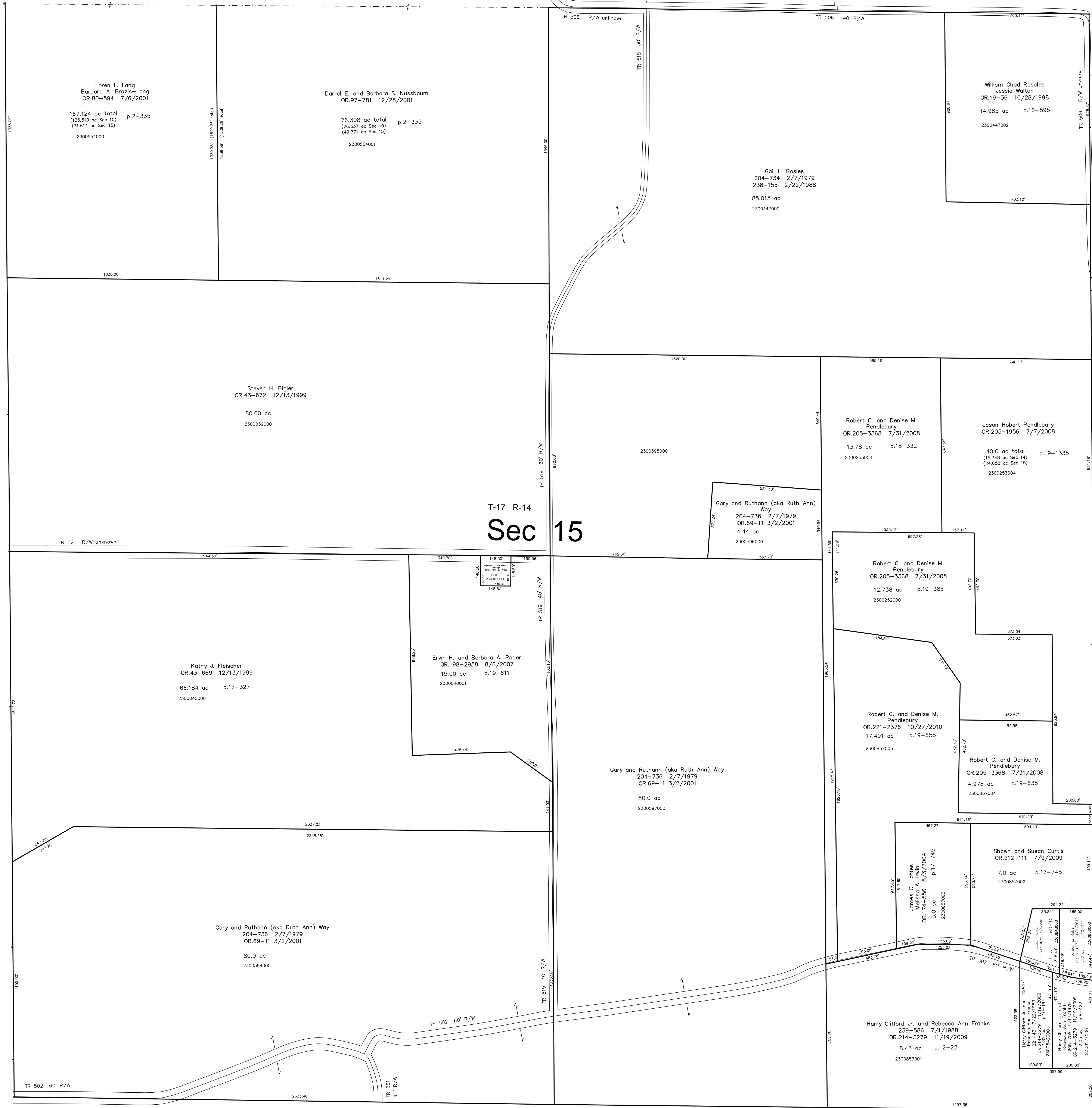


Ripley Township (RP-17)  
Section 10 T-17 R-14

TR 506  
R/W  
TR 518



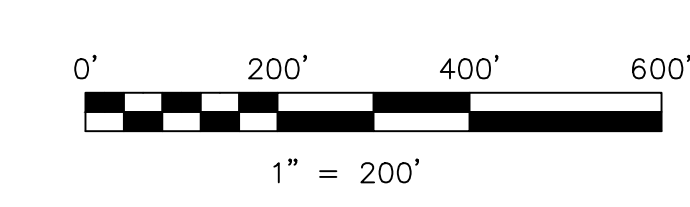
Ripley Township (RP-21)  
Section 14 T-17 R-14

Ripley Township (RP-11)  
Section 16 T-17 R-14

Monroe Township (M-26)  
Section 22 T-17 R-14

Last Revision: 10/27/2010

**T-17, R-14, Section 15**  
**Ripley Twp.**  
**Holmes County, Ohio**



S.F.T. new survey required  
for next transfer

LET IT BE KNOWN, THIS MAP HAS BEEN PREPARED AS A REFERENCE GUIDE TO PROPERTY OWNERSHIP. WE BELIEVE THIS INFORMATION TO BE CORRECT AND CURRENT, HOWEVER IT IS NOT INTENDED FOR ANY LEGAL USE, WHETHER IT BE IN SALES, TRANSFERS, TRADES, LEASES OF ANY TYPE, ETC., AND DO NOT ACCEPT RESPONSIBILITY FOR ERRORS OF ANY NATURE OR OMISSIONS CONTAINED HEREIN.

# RP-16