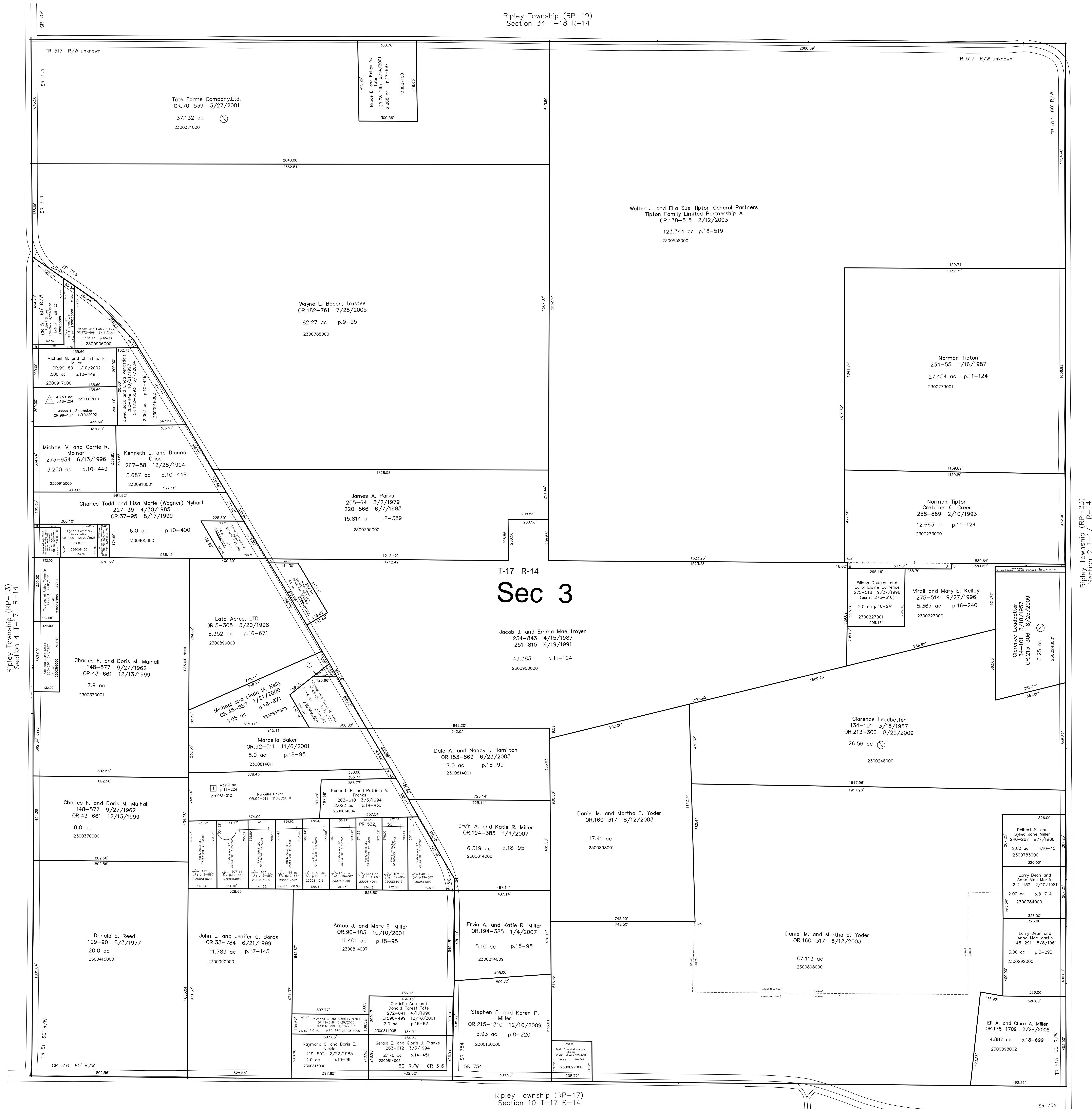


Ripley Township (RP-19)  
Section 34 T-18 R-14



Ripley Township (RP-13)  
Section 4 T-17 R-14

Ripley Township (RP-23)  
Section 2 T-17 R-14

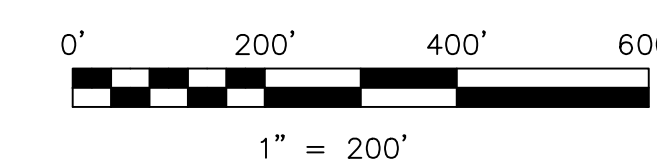
2300899002 Michael and Linda M. Kelly  
OR.45-857 1/21/2000  
0.098 ac p.16-162

DeFelle Allotment No.1  
Plot 13-148 Platted 1/23/1992

Brier Knoll  
Plot 16-224 Platted 3/8/2002

Reddy Acres Subdivision  
Plot 19-867 Platted 11/15/2006  
Maintenance Agreement OR.193-307 11/15/2006

S.F.T. new survey required  
for next transfer



LET IT BE KNOWN, THIS MAP HAS BEEN PREPARED AS A REFERENCE  
GUIDE TO PROPERTY OWNERSHIP. WE BELIEVE THIS INFORMATION TO  
BE CORRECT AND CURRENT. HOWEVER IT IS NOT INTENDED FOR ANY  
LEGAL USE, WHETHER IT BE IN SALES, TRANSFERS, TRADES, LEASES  
OR ANY TYPE, ETC., AND DO NOT ACCEPT RESPONSIBILITY FOR  
ERRORS OF ANY NATURE OR OMISSIONS CONTAINED HEREIN.

Last Revision: 12/10/2009

**T-17, R-14, Section 3**  
**Ripley Twp.**  
**Holmes County, Ohio**

**RP-18**