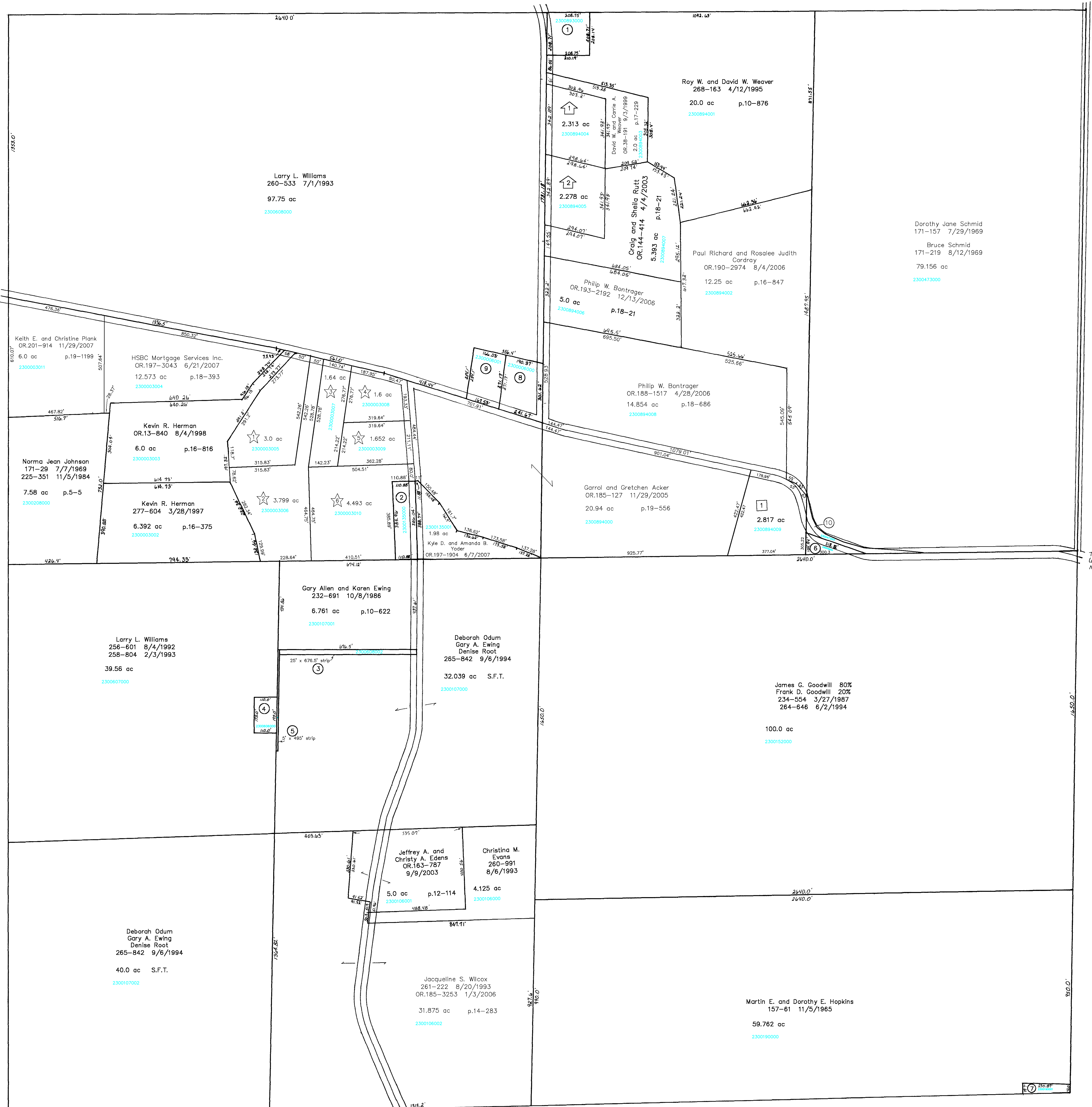


T.H. 524  
(old T.H. 355)  
No K/U  
Sec. 12

T.H. 525  
(old T.H. 354)  
No K/U

T.H. 506  
(old T.H. 37)  
No K/U

T.H. 506  
(old T.H. 37)  
No K/U



- 2300893000 ① TROYER EDWARD A. AND ARIE  
OR 0083-726 8/8/2001  
1.0 ac p.10-334
- 2300135000 ② Kyle D. and Amanda B. Yoder  
OR 197-1904 6/7/2007  
0.982 ac p.17-273
- 2300680802 ③ WILLIAMS LARRY L.  
256-601 8/4/1992  
258-804 2/3/1993  
STRIP
- 2300606000 ④ WILLIAMS LARRY L.  
174-557 9/1/1970  
189-243 8/15/1977  
0.44 ac p.5-50
- 2300680801 ⑤ WILLIAMS LARRY L.  
256-601 8/4/1992  
258-804 2/3/1993  
STRIP

- 2300152001 ⑥ GOODWILL JAMES G. AND FRANK D.  
234-554 3/23/1987  
264-646 6/2/1994  
0.11 ac
- 2300190001 ⑦ SEXTON LORIE ANN BECKETT  
240-120 8/22/1988  
252-171 7/16/1991  
OR 0026-573 2/22/1999  
0.238 ac p.12-56
- 2300006000 ⑧ Andrew I. and Jodie M. Smith  
OR 180-1694 5/27/2005  
1.391 ac p.16-8
- 2300006001 ⑨ BRUNME DALE R. AND CHARLOTTE M.  
GILFOLL DUSTIN M.  
271-760 1/24/1996  
OR 0086-831 8/11/2000  
1.0 ac p.16-8
- 2300473001 ⑩ James G. and Frank D. Goodwill  
OR 185-1918 12/20/2005  
0.344 ac p.19-380

- T.H. 524  
(old T.H. 319)  
No K/U
- Monroe Twp
- East Way Subdivision  
Plat 18-826 Platted 12/2/2003  
2300894009 ① ACKER GARROL AND GRETCHEN  
OR 0168-2204 12/3/2003  
2.817 ac
  - Ghost Rider Subdivision  
Plat 18-15 Platted 7/12/2001  
2300894004 ② Jonas W. Swartzentruber  
OR 197-592 8/23/2007  
2.313 ac
  - 2300894005 ③ BUTZER MATTHEW T. AND JENNIFER L.  
OR 0082-523 7/25/2001  
2.278 ac

- Victory Estates  
Plat 19-724 Platted 6/2/2006  
2300003005 ④ Dan A. and Martha E. Mast  
OR 192-1710 10/20/2006  
3.0 ac p.19-724
- 2300003006 ⑤ Dan A. and Martha E. Mast  
OR 192-1710 10/20/2006  
3.799 ac p.19-724
- 2300003007 ⑥ Robert W. and Wylie L. Johnson  
OR 190-3000 8/4/2006  
1.64 ac p.19-724
- 2300003008 ⑦ KDJ Enterprise, LLC  
OR 192-1291 3/7/2007  
1.6 ac p.19-724
- 2300003009 ⑧ Jeffrey A. and Lori A. Snively  
OR 189-3255 6/26/2006  
1.852 ac p.19-724
- 2300003010 ⑨ Dan A. and Martha E. Mast  
OR 192-1710 10/20/2006  
4.493 ac p.19-724

T-17, R-14, Sec. 13  
RIPLEY TWP.

SCALE: 1" = 200'

Last Revision: 11/29/2007

LET IT BE KNOWN, THIS MAP HAS BEEN PREPARED AS A REFERENCE GUIDE TO PROPERTY OWNERSHIP. WE BELIEVE THIS INFORMATION TO BE CORRECT AND CURRENT, HOWEVER, IT IS NOT INTENDED FOR ANY LEGAL USE, WHETHER IT BE IN SALES, TRANSFERS, TRADES, LEASES OF ANY TYPE, ETC., AND DO NOT ACCEPT RESPONSIBILITY FOR ERRORS OF ANY NATURE OR OMISSIONS CONTAINED HEREIN.

RP-26