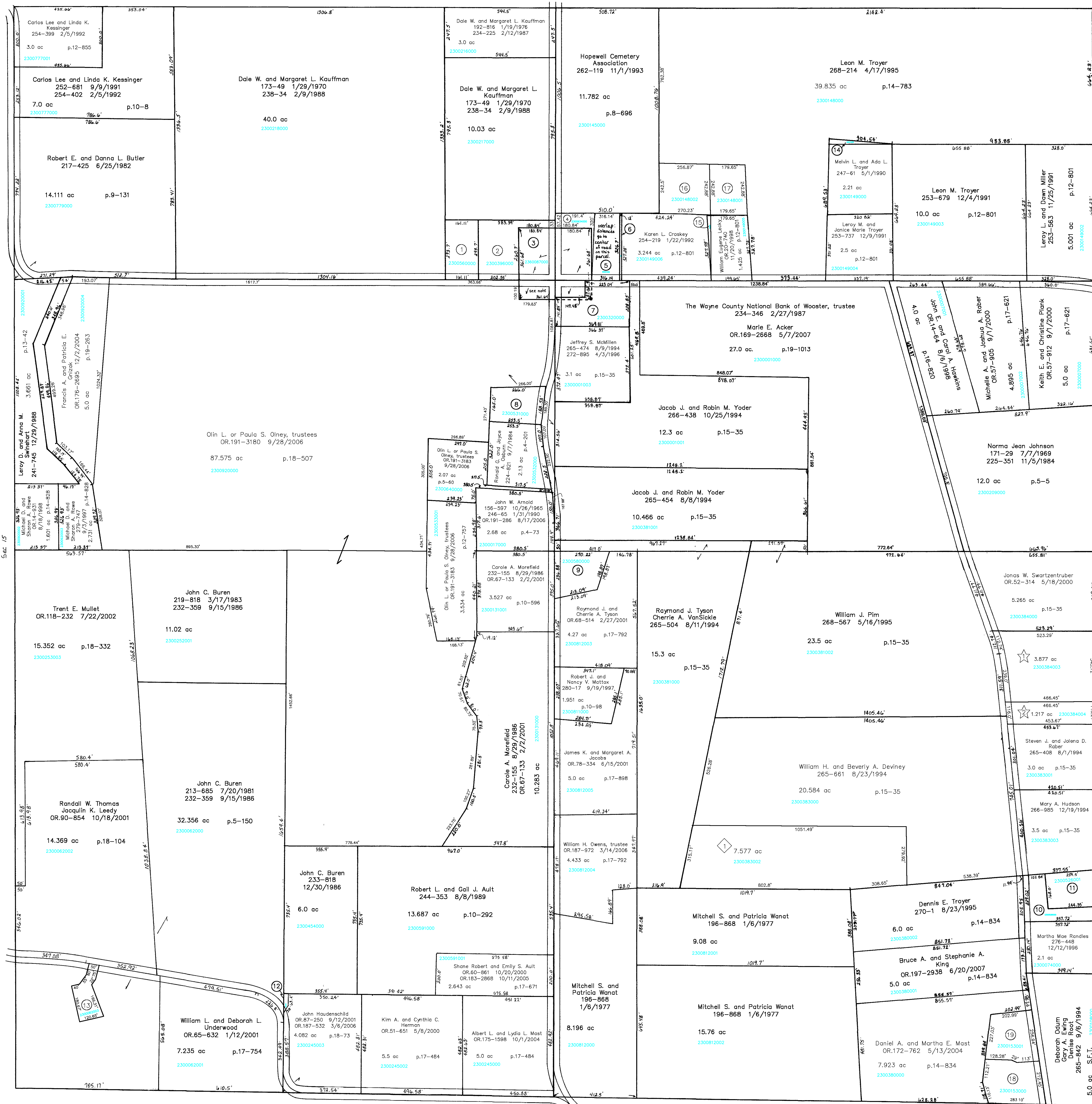


T.H. 506
(Old T.H. 317)
No R/W

Sec. 11 S. R. 754



T.H. 506
(Old T.H. 317)
No R/W

Note: see deed 228-512, et al., et al. plat 10-444
Paul D. Taggart deeded .4166 ac to
Hopewell United Presbyterian Church
because his deed had no exception
for the small part of a 3.0 ac tract
the church owned on deed 2-405, that
came out of a parcel on deed 14-189
The .4166 ac is not carried on a
separate card because it is completely
overlapped by the 3.0 ac description.

Sec. 13

- 2300560000 (1) Marilyn E. Smith
251-821 6/19/1991
OR.192-2597 10/31/2006
1.086 ac p.7-297
- 2300396000 (2) TRUSTEES OF EAST HOPEWELL
49-200 6/24/1889
1.504 ac
- 2360087000 (3) TRUSTEES OF EAST HOPEWELL CONGREGATION
2-605 5/1/1834
3.0 ac
- 2300934000 (4) TRUSTEES OF EAST HOPEWELL CONGREGATION
23-26 4/22/1859
0.276 ac
- 2300941000 (5) TRUSTEES OF HOPEWELL CEMETERY ASSOCIATION
95-185 12/2/1925
2.27 ac
- 2300940000 (6) TRUSTEES OF HOPEWELL CEMETERY ASSOCIATION
95-179 11/19/1925
0.094 ac
- 2300320000 (7) MC MILLLEN JEFFREY S.
204-685 1/30/1979
278-763 6/26/1997
1.651 ac p.8-372

- 2300531000 (8) TRIVETT MICHAEL J. AND DONNA J.
236-698 10/8/1987
1.05 ac p.7-470
- 2300580000 (9) TROYER RUDY J.
OR.008-487 8/15/2001
1.15 ac p.8-156
- 2300526000 (10) PERS, FRANK R.
614 AND, LORA L.
252-4 7/1/1991
1.0 ac
- 2300526001 (11) KING GEORGE S. AND JOY D.
251-406 8/6/1991
1.0 ac p.12-668
- 2300245001 (12) BUREN JOHN C.
232-364 9/12/1986
2.27 ac
- 2300062003 (13) MARTIN JAMES D. AND PATRICIA S.
OR.0170-891 2/26/2004
0.568 ac p.18-898
- 2300149001 (14) TROYER MELVIN L. AND ADA L.
247-61 5/1/1990
0.087 ac

- 2300149002 (15) CROSKY KAREN L.
OR.0176-1454 3/30/2004
0.075 ac p.19-171
- 2300148002 (16) CROSKY KAREN L.
OR.0174-3024 9/2/2004
1.467 ac p.19-171
- 2300148001 (17) LECKY WILLIAM EUGENE
OR.0174-3022 9/2/2004
1.0 ac p.19-171
- 2300153000 (18) Richard A. or Jane C. Groven, trustees
OR.143-789 3/31/2003
1.392 ac p.18-571
- 2300153001 (19) Daniel A. and Jolena D. Mast
OR.178-2843 3/14/2005
1.305 ac p.19-332

- Generic Acres Subdivision
Plat 19-310 Platted 1/27/2005
- Michael E. Deviney
OR.178-3235 3/22/2005
7.577 ac p.19-310
- Hudson Hills Subdivision
Plat 19-652 Platted 3/15/2006
- Steven J. and Jolena D. Rober
OR.201-1899 12/18/2007
3.877 ac p.19-652
- Steven J. and Jolena D. Rober
OR.201-1899 12/18/2007
1.217 ac p.19-652

Monroe Twp. S. R. 754

T.H. 262
(Old T.H. 418)
No R/W

T-17, R-14, Sec. 14 RIPLEY TWP.

SCALE: 1" = 200'

Latest Revision: 12/18/2007

RP-21

LET IT BE KNOWN, THIS MAP HAS BEEN PREPARED AS A REFERENCE GUIDE TO PROPERTY OWNERSHIP. WE BELIEVE THIS INFORMATION TO BE CORRECT AND CURRENT, HOWEVER, IT IS NOT INTENDED FOR ANY LEGAL USE, WHETHER IT BE IN SALES, TRANSFERS, TRADES, LEASES OF ANY TYPE, ETC., AND DO NOT ACCEPT RESPONSIBILITY FOR ERRORS OR OMISSIONS CONTAINED HEREIN.