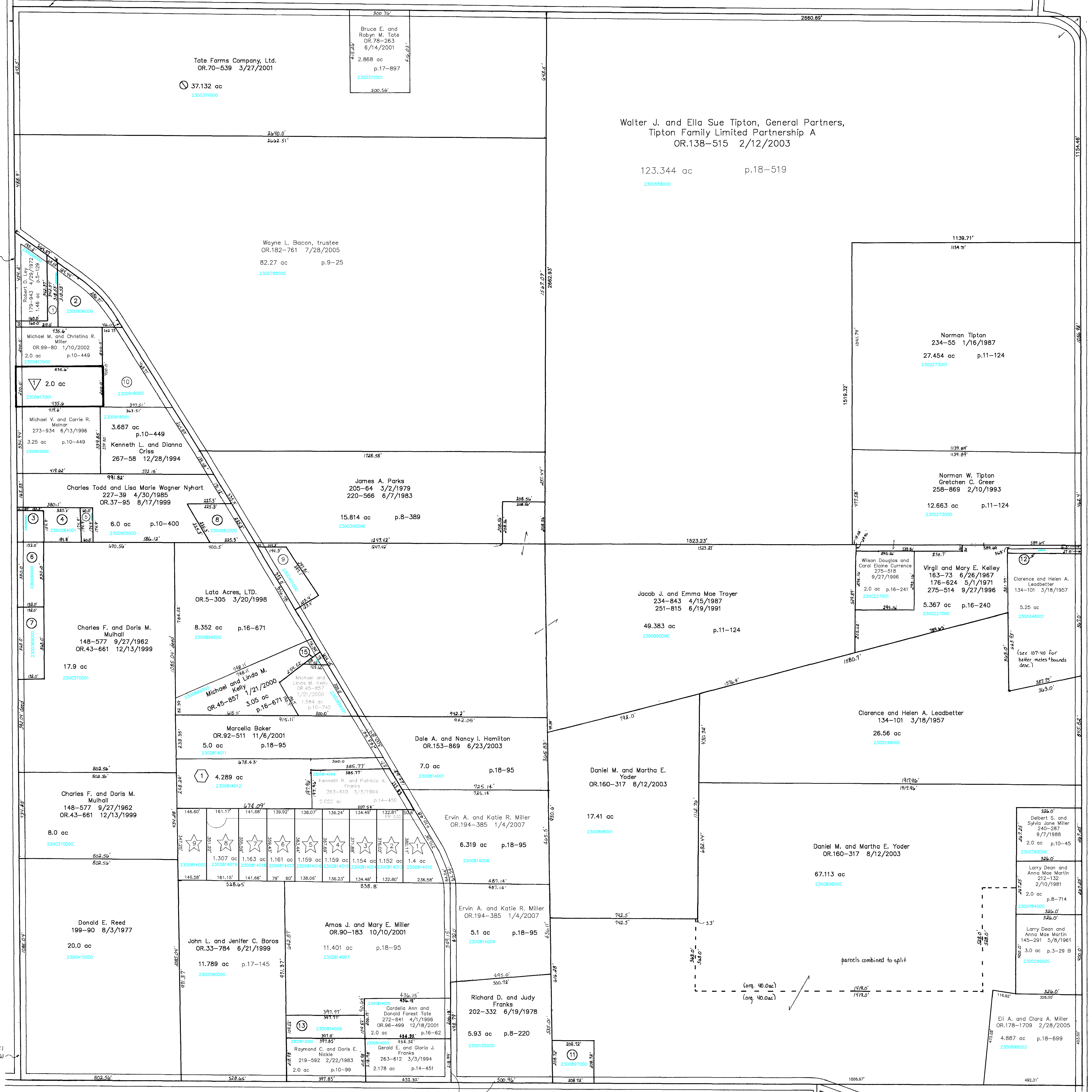


S.R. 754

Sec. 34

T.H. 513
(Old T.H. 337)
60' R/W



- ▽ DeFelle Allotment No.1
Plat 13-148 Platted 1/23/1992
- 2300917001 ▽ SHUMAKER JASON L.
OR 0099-137 1/10/2002
2.0 ac
- Briar Knoll
Plat 18-224 Platted 3/8/2002
- 2300814012 ○ BAKER MARCELLA
OR 0092-511 11/6/2001
4.289 ac
- ☆ Reddy Acres Subdivision
Plat 19-867 Platted 11/15/2006
- 2300814010 ☆ Reddy Acres, LLC
OR 183-308 9/7/2005
1.4 ac
- 2300814013 ☆ Reddy Acres, LLC
OR 183-308 9/7/2005
1.152 ac
- 2300814014 ☆ Reddy Acres, LLC
OR 183-308 9/7/2005
1.154 ac
- 2300814015 ☆ Reddy Acres, LLC
OR 183-308 9/7/2005
1.156 ac
- 2300814016 ☆ Reddy Acres, LLC
OR 183-308 9/7/2005
1.159 ac
- 2300814017 ☆ Reddy Acres, LLC
OR 183-308 9/7/2005
1.161 ac
- 2300814018 ☆ Reddy Acres, LLC
OR 183-308 9/7/2005
1.163 ac
- 2300814019 ☆ Reddy Acres, LLC
OR 183-308 9/7/2005
1.307 ac
- 2300814020 ☆ Reddy Acres, LLC
OR 183-308 9/7/2005
1.175 ac

- 2300250000 ① LEY ROBERT D.
260-1 9/19/1974
0.502 ac
- 2300906000 ② LEY ROBERT AND PATRICIA
OR 0172-696 5/13/2004
1.378 ac p.10-49
- 2360084000 ③ BIGELOW METHODIST CHURCH
14-45 4/28/1848
0.579 ac
- 2360084001 ④ BIGELOW CEMETERY ASSOCIATION
45-200 12/23/1925
0.8 ac
- 2300037000 ⑤ BIGELOW CEMETERY ASSOCIATION
196-707 12/16/1976
0.241 ac p.7-746
- 2360095000 ⑥ TRUSTEES OF RIPLEY TOWNSHIP
49-284 9/18/1891
1.0 ac
- 2300369000 ⑦ SMALL TODD AND DIANE
235-346 6/1/1987
1.1 ac
- 2300582000 ⑧ NYHART CHARLES TODD AND LISA
232-514 9/25/1996
1.0 ac p.7-1
- 2300401000 ⑨ Garnet Plaster
176-533 4/15/1971
OR 190-432 7/3/2006
0.95 ac
- 2300918000 ⑩ VENOSDALE DAVID JACK AND LINDA
280-449 10/21/1997
OR 0172-3093 6/7/2004
2.067 ac p.10-449
- 2300897000 ⑪ David C. and Kimberly A. Skinner
OR 191-2602 9/19/2006
1.0 ac p.10-349
- 2300937000 ⑫ PARSONS LOIS B. LAST KNOWN OWNER
96-257 6/29/1926
0.25 ac
- 2300814006 ⑬ NICKLE RAYMOND C. AND DORIS E.
OR 0048-518 3/29/2000
OR 196-799 4/18/2007
1.0 ac p.17-443
- ⑭ Not used
- 2300899002 ⑮ KELLY MICHAEL AND LINDA M.
OR 0045-857 1/21/2000
0.098 ac p.16-162

T-17, R-14, Sec. 3
RIPLEY TWP.

SCALE: 1" = 200'

Last Revision: 4/18/2007

LET IT BE KNOWN, THIS MAP HAS BEEN PREPARED AS A REFERENCE GUIDE TO PROPERTY OWNERSHIP. WE BELIEVE THIS INFORMATION TO BE CORRECT AND CURRENT. HOWEVER, IT IS NOT INTENDED FOR ANY LEGAL USE, WHETHER IT BE IN SALES, TRANSFERS, TRADES, LEASES OF ANY TYPE, ETC., AND DO NOT ACCEPT RESPONSIBILITY FOR ERRORS OF ANY NATURE OR OMISSIONS CONTAINED HEREIN.

IRD-188