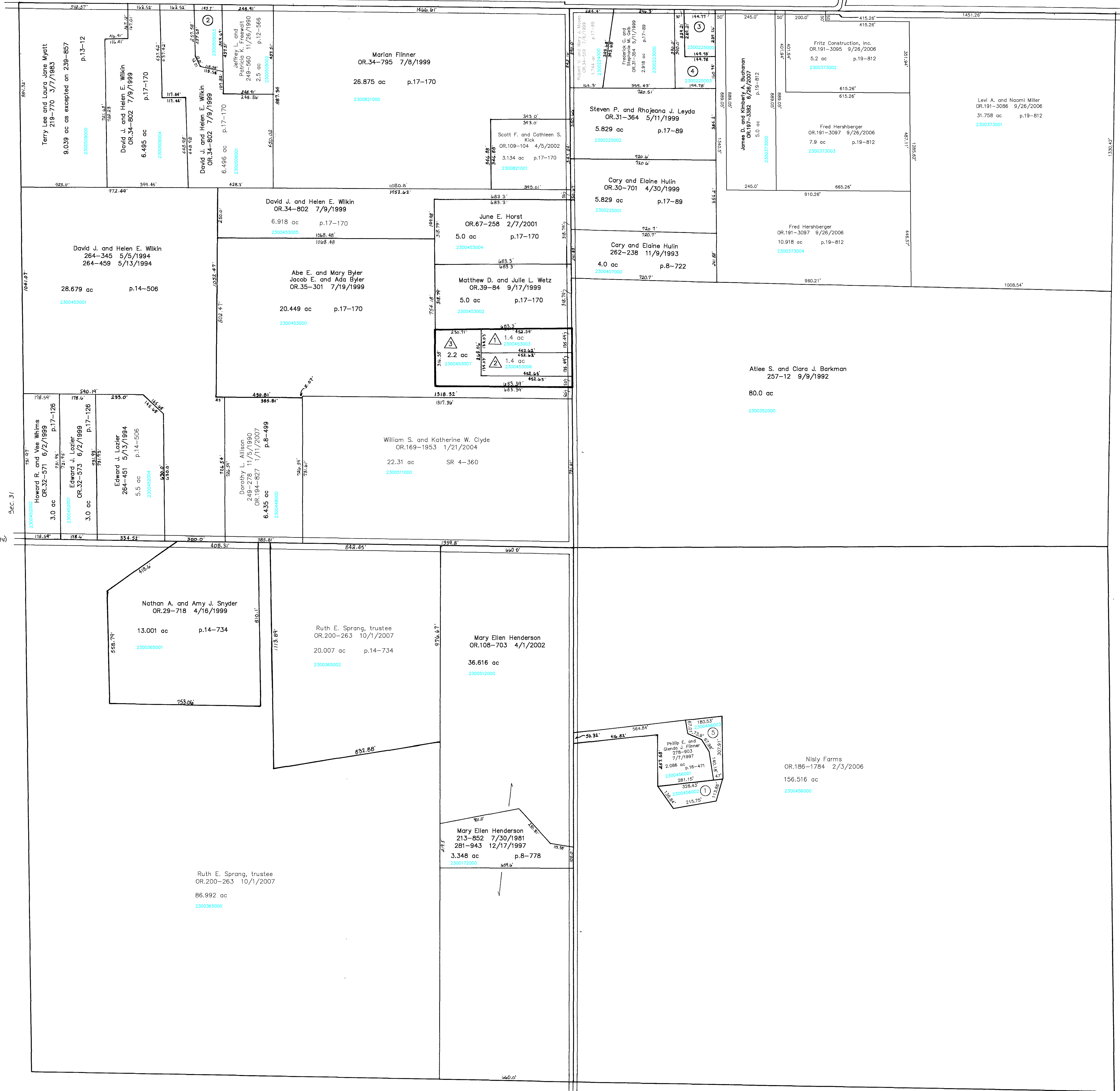


T.H. 511
Old T.H. 2
60' x 1/2"

Sec. 29

C.H. 373
40' x 1/2"

T.H. 511
Old T.H. 1



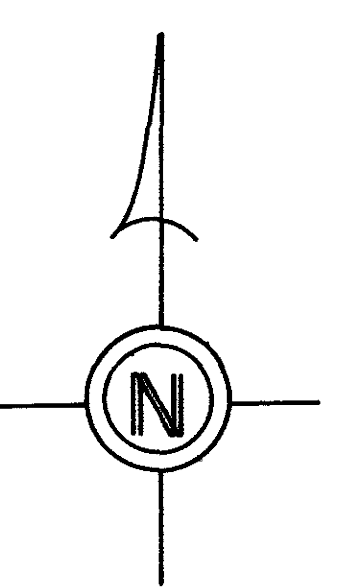
Sec. 31

T.H. 474
Old T.H. 374
60' x 1/2"

Sec. 33

C.H. 373
40' x 1/2"

Sec. 5



- 2300456002 ① Phillip E. and Glenda J. Finner
OR.186-1775 2/3/2006
0.699 ac p.19-621
- 2300509003 ② EVANS, JERRY AND TERRIE
251-702 6/12/1991
1.0 ac p.12-677
- 2300225000 ③ SKELLY KEVIN A. AND ELIZABETH A.
OR.0045-766 1/18/2000
OR.0135-251 1/13/2003
0.788 ac p.17-149
- 2300225003 ④ PENICK ANTHONY L. AND JAMI L.
OR.0037-594 8/26/1999
1.0 ac p.17-149
- 2300456003 ⑤ Nisly Farms
OR.186-1784 2/3/2006
0.699 ac p.19-621

- △ Southwest Construction Allotment No.1
Plot 17-289 Platted 10/27/1999
- △ Todd L. Byers
OR.181-1134 6/30/2005
1.4 ac
- △ Todd L. Byers
OR.181-1134 6/30/2005
1.4 ac
- △ Atlee and Clara and Emma A. Barkman
OR.190-3473 8/14/2006
2.2 ac p.17-289

Last Revision: 10/1/2007
T-18, R-14, Sec. 32
 RIPLEY TWP.

SCALE : 1" = 200'

RP-9

LET IT BE KNOWN, THIS MAP HAS BEEN PREPARED AS A REFERENCE GUIDE TO PROPERTY OWNERSHIP. WE BELIEVE THIS INFORMATION TO BE CORRECT AND CURRENT, HOWEVER, IT IS NOT INTENDED FOR ANY LEGAL USE, WHETHER IT BE IN SALES, TRANSFERS, TRADES, LEASES OF ANY TYPE, ETC., AND DO NOT ACCEPT RESPONSIBILITY FOR ERRORS OF ANY NATURE OR OMISSIONS CONTAINED HEREIN.