

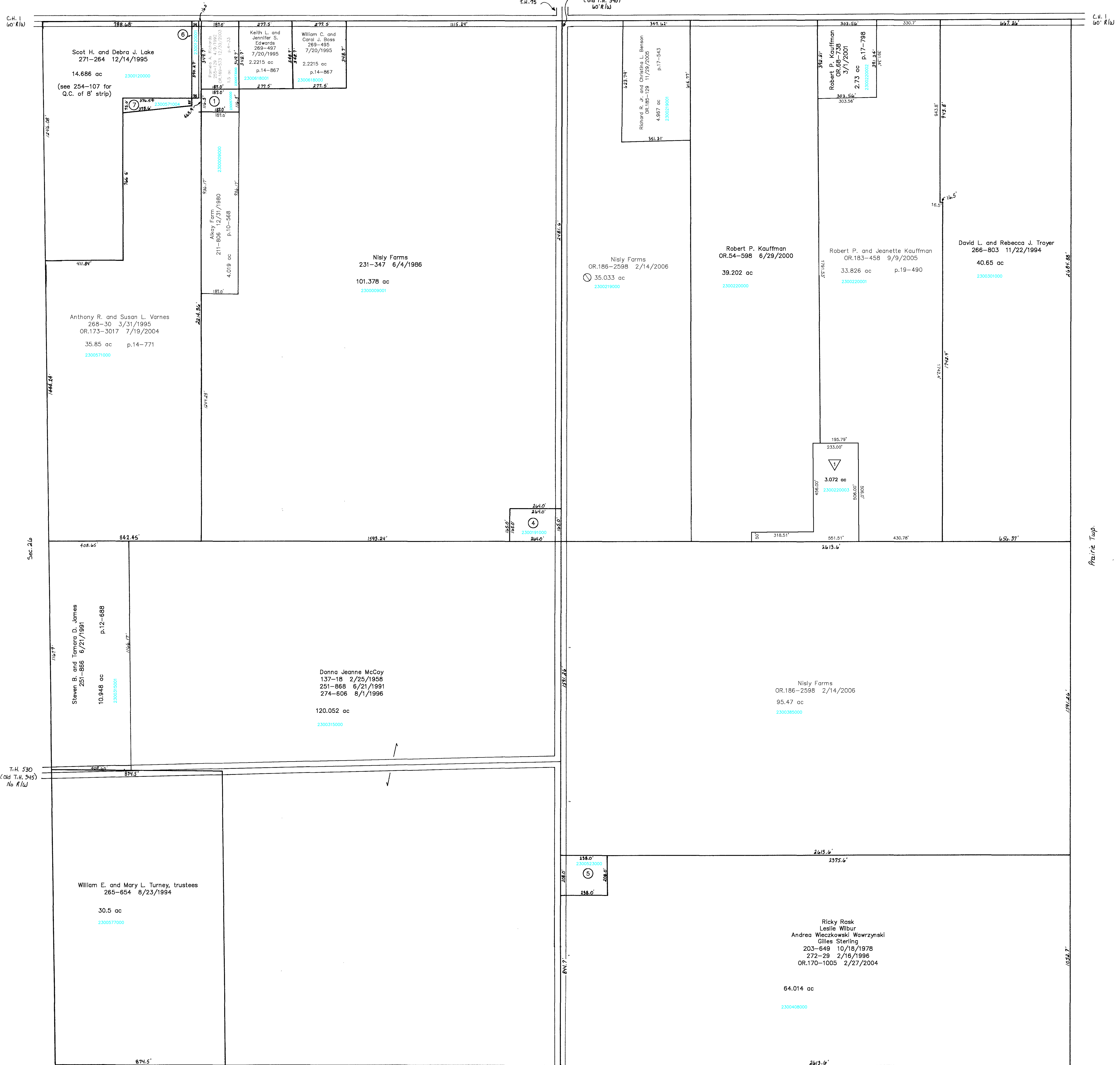
Wayne County

Wayne Co.
T.H. 75

Holmes Co. T.H. 529
(Old T.H. 340)
60' R/W

C.H. 1
60' R/W

C.H. 1
60' R/W



- 2300572000 ① RICHARDS PAMELA A.
255-129 4/9/1992
OR.0189-373 12/30/2003
0.5 ac p.4-202
- ② Not used
- ③ Not used
- 2300191000 ④ Thomas M. aka Marshall Horn
128-119 11/2/1951
OR.190-2344 7/28/2006
1.0 ac
- 2300523000 ⑤ STERLING JOHN LEE JR.
201-12 1/25/1978
1.136 ac p.8-146
- 2300120001 ⑥ VARNES ANTHONY R. AND SUSAN L.
271-144 12/5/1995
OR.0133-3013 7/19/2004
0.314 ac p.14-965
- 2300571004 ⑦ LAKE SCOT H. AND DEBRA J.
271-264 12/14/1995
0.475 ac p.14-965

▽ Moss Creek Subdivision
Plat 2-356 Platted 2/3/2003
2300220003 ▽ ELVEY CARRIE R.
OR.0143-34 3/25/2003
3.072 ac

T.H. 529
Old T.H. 340
60' R/W
Sec. 31

T-18, R-14, Sec. 25
RIPLEY TWP.

SCALE: 1" = 200'

Last Revision: 7/28/2006

LET IT BE KNOWN, THIS MAP HAS BEEN PREPARED AS A REFERENCE GUIDE TO PROPERTY OWNERSHIP. WE BELIEVE THIS INFORMATION TO BE CORRECT AND CURRENT, HOWEVER, IT IS NOT INTENDED FOR ANY LEGAL USE, WHETHER IT BE IN SALES, TRANSFERS, TRADES, LEASES OF ANY TYPE, ETC., AND DO NOT ACCEPT RESPONSIBILITY FOR ERRORS OF ANY NATURE OR OMISSIONS CONTAINED HEREIN.

RP-30