

T.H. 513  
(Old T.H. 337)  
60' R/W

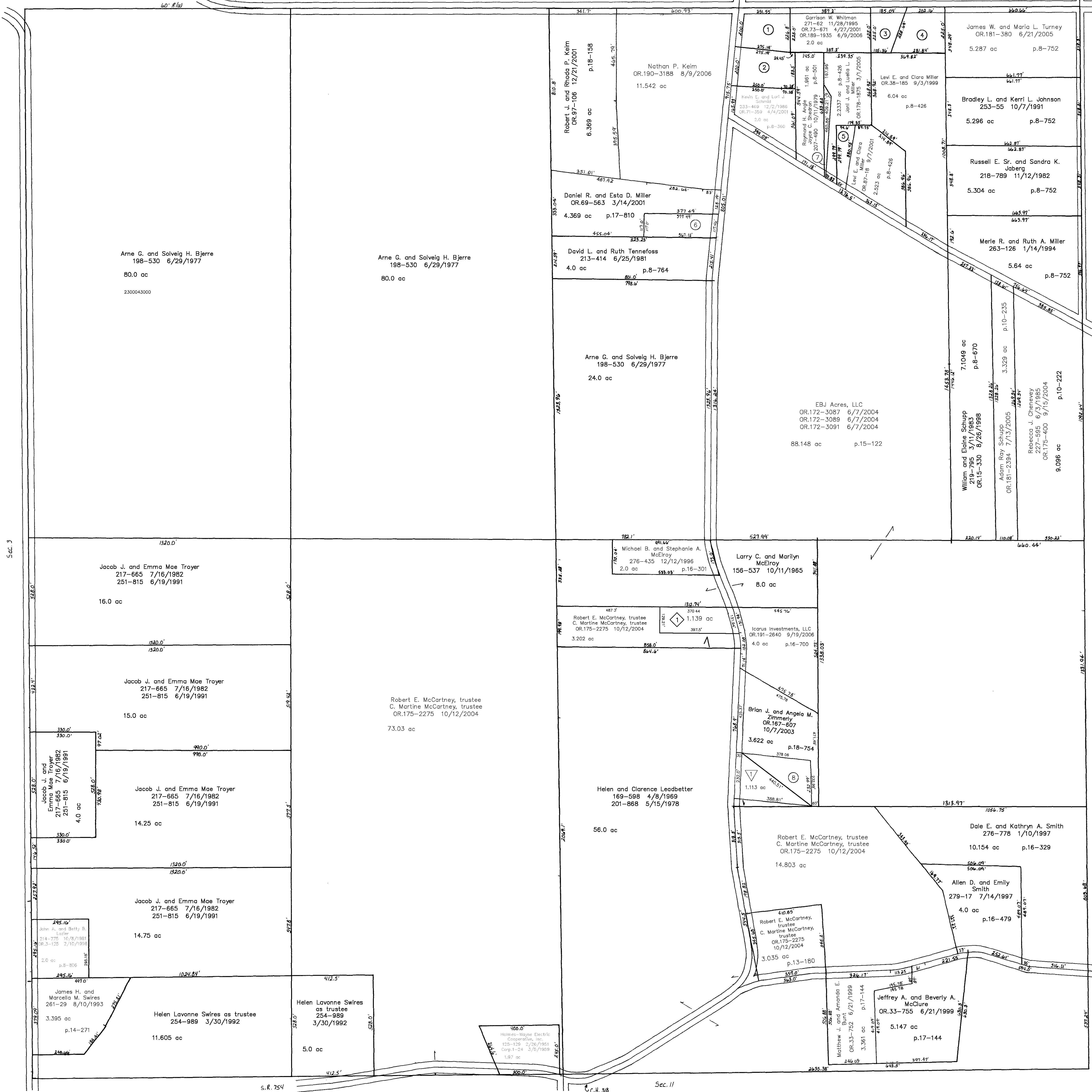
T.H. 516  
(Old T.H. 328)  
60' R/W

Sec. 35

C.H. 318  
60' R/W

T.H. 527  
(Old T.H. 339)  
40' R/W

T.H. 516  
(Old T.H. 328)  
No R/W to C.H. 318



T.H. 513  
(Old T.H. 337)  
60' R/W

- 2300552001 ⑦ Raymond H. and Joyce C. Angle  
OR.178-1582 2/25/2005  
0.1873 ac p.19-318
- 2300311001 ⑧ Brian J. Zimmerly and Angela M. Thompson  
OR.20-413 11/16/1999  
0.924 ac p.11-92

◇ Cart Subdivision  
Plat 18-825 Platted 12/2/2003

▽ Peaceful Point Subdivision  
Plat 19-666 Platted 4/5/2006

2300311005 ▽ Lester J. and Rosanna R. Yoder  
OR.188-2449 5/9/2006  
1.113 ac p.19-666

T-17, R-14, Sec. 2  
RIPLEY TWP.

SCALE: 1" = 200'

LET IT BE KNOWN, THIS MAP HAS BEEN PREPARED AS A REFERENCE GUIDE TO PROPERTY OWNERSHIP. WE BELIEVE THIS INFORMATION TO BE CORRECT AND CURRENT, HOWEVER, IT IS NOT INTENDED FOR ANY LEGAL USE, WHETHER IT BE IN SALES, TRANSFERS, TRADES, LEASES OF ANY TYPE, ETC., AND DO NOT ACCEPT RESPONSIBILITY FOR ERRORS OF ANY NATURE OR OMISSIONS CONTAINED HEREIN.

RP-23