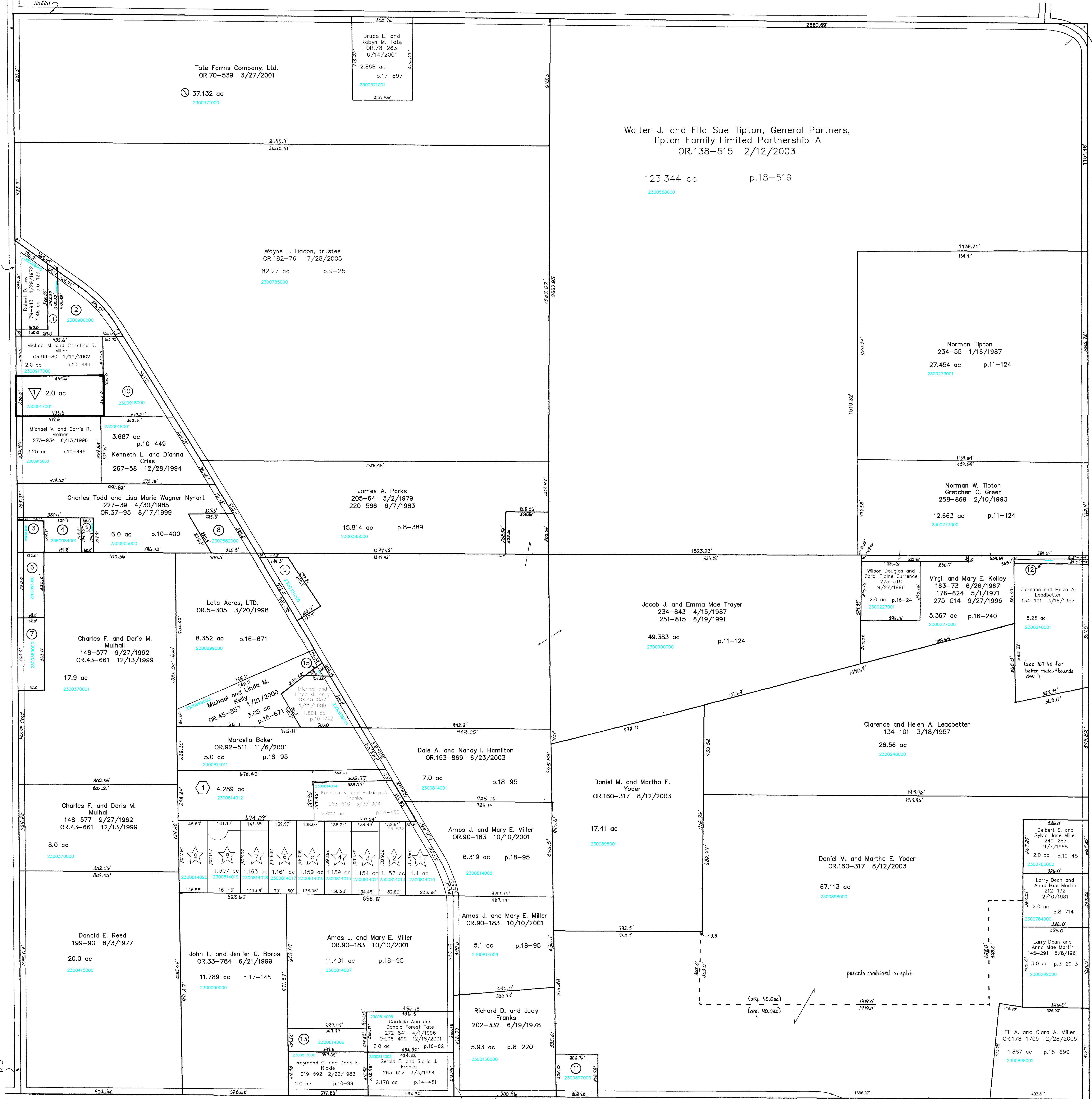


S.R. 754

Sec. 34

T.H. 513  
(Old T.H. 337)  
60' R/W



- DeFelle Allotment No. 1  
Plat 13-148 Platted 1/23/1992
- 2300917001 SHUMAKER JASON L.  
OR 0099-137 1/10/2002  
2.0 ac
- Briar Knoll  
Plat 18-224 Platted 3/8/2002
- 2300814012 BAKER MARCELLA  
OR 0092-511 11/6/2001  
4.289 ac
- Reddy Acres Subdivision  
Plat 19-867 Platted 11/15/2006
- 2300814010 Reddy Acres, LLC  
OR 183-308 9/7/2005  
1.4 ac
- 2300814013 Reddy Acres, LLC  
OR 183-308 9/7/2005  
1.152 ac
- 2300814014 Reddy Acres, LLC  
OR 183-308 9/7/2005  
1.154 ac
- 2300814015 Reddy Acres, LLC  
OR 183-308 9/7/2005  
1.156 ac
- 2300814016 Reddy Acres, LLC  
OR 183-308 9/7/2005  
1.159 ac
- 2300814017 Reddy Acres, LLC  
OR 183-308 9/7/2005  
1.161 ac
- 2300814018 Reddy Acres, LLC  
OR 183-308 9/7/2005  
1.163 ac
- 2300814019 Reddy Acres, LLC  
OR 183-308 9/7/2005  
1.307 ac
- 2300814020 Reddy Acres, LLC  
OR 183-308 9/7/2005  
1.175 ac

- 2300250000 LEY ROBERT D.  
260-1 9/19/1974  
0.502 ac
- 2300906000 LEY ROBERT AND PATRICIA  
OR 0172-696 5/13/2004  
1.378 ac p.10-49
- 2360084000 BIGELOW METHODIST CHURCH  
14-45 4/28/1848  
0.579 ac
- 2360084001 BIGELOW CEMETERY ASSOCIATION  
45-200 12/23/1925  
0.8 ac
- 2300037000 BIGELOW CEMETERY ASSOCIATION  
196-707 12/16/1976  
0.241 ac p.7-746
- 2360095000 TRUSTEES OF RIPLEY TOWNSHIP  
49-284 9/18/1891  
1.0 ac
- 2300369000 SMALL TODD AND DIANE  
235-346 6/1/1987  
1.1 ac
- 2300582000 NYHART CHARLES TODD AND LISA  
232-514 9/25/1996  
1.0 ac p.7-1
- 2300401000 Garnet Plaster  
176-533 4/15/1971  
0.190-432 7/3/2006  
0.95 ac
- 2300918000 VENOSDALE DAVID JACK AND LINDA  
280-449 10/21/1997  
OR 0172-3093 6/7/2004  
2.067 ac p.10-449
- 2300897000 David C. and Kimberly A. Skinner  
OR 191-2602 9/19/2006  
1.0 ac p.10-349
- 2300937000 PARSONS LOIS B. LAST KNOWN OWNER  
96-257 6/29/1926  
0.25 ac
- 2300814006 NICKLE RAYMOND C. AND DORIS E.  
OR 0048-516 3/29/2000  
1.0 ac p.17-443
- 2300899002 KELLY MICHAEL AND LINDA M.  
OR 0045-857 1/21/2000  
0.098 ac p.16-162
- 2300814007 Amos J. and Mary E. Miller  
OR 90-183 10/10/2001  
6.319 ac p.18-95
- 2300814008 Amos J. and Mary E. Miller  
OR 90-183 10/10/2001  
5.1 ac p.18-95
- 2300814009 Amos J. and Mary E. Miller  
OR 90-183 10/10/2001  
5.93 ac p.8-220
- 2300814010 Daniel M. and Martha E. Yoder  
OR 160-317 8/12/2003  
17.41 ac
- 2300814011 Daniel M. and Martha E. Yoder  
OR 160-317 8/12/2003  
67.113 ac
- 2300814012 Daniel M. and Martha E. Yoder  
OR 160-317 8/12/2003  
17.41 ac
- 2300814013 Daniel M. and Martha E. Yoder  
OR 160-317 8/12/2003  
67.113 ac
- 2300814014 Daniel M. and Martha E. Yoder  
OR 160-317 8/12/2003  
17.41 ac
- 2300814015 Daniel M. and Martha E. Yoder  
OR 160-317 8/12/2003  
67.113 ac
- 2300814016 Daniel M. and Martha E. Yoder  
OR 160-317 8/12/2003  
17.41 ac
- 2300814017 Daniel M. and Martha E. Yoder  
OR 160-317 8/12/2003  
67.113 ac
- 2300814018 Daniel M. and Martha E. Yoder  
OR 160-317 8/12/2003  
17.41 ac
- 2300814019 Daniel M. and Martha E. Yoder  
OR 160-317 8/12/2003  
67.113 ac
- 2300814020 Daniel M. and Martha E. Yoder  
OR 160-317 8/12/2003  
17.41 ac

T-17, R-14, Sec. 3  
RIPLEY TWP.

SCALE: 1" = 200'

Last Revision: 9/19/2006

LET IT BE KNOWN, THIS MAP HAS BEEN PREPARED AS A REFERENCE GUIDE TO PROPERTY OWNERSHIP. WE BELIEVE THIS INFORMATION TO BE CORRECT AND CURRENT. HOWEVER, IT IS NOT INTENDED FOR ANY LEGAL USE, WHETHER IT BE IN SALES, TRANSFERS, TRADES, LEASES OF ANY TYPE, ETC., AND DO NOT ACCEPT RESPONSIBILITY FOR ERRORS OF ANY NATURE OR OMISSIONS CONTAINED HEREIN.

IRD-188