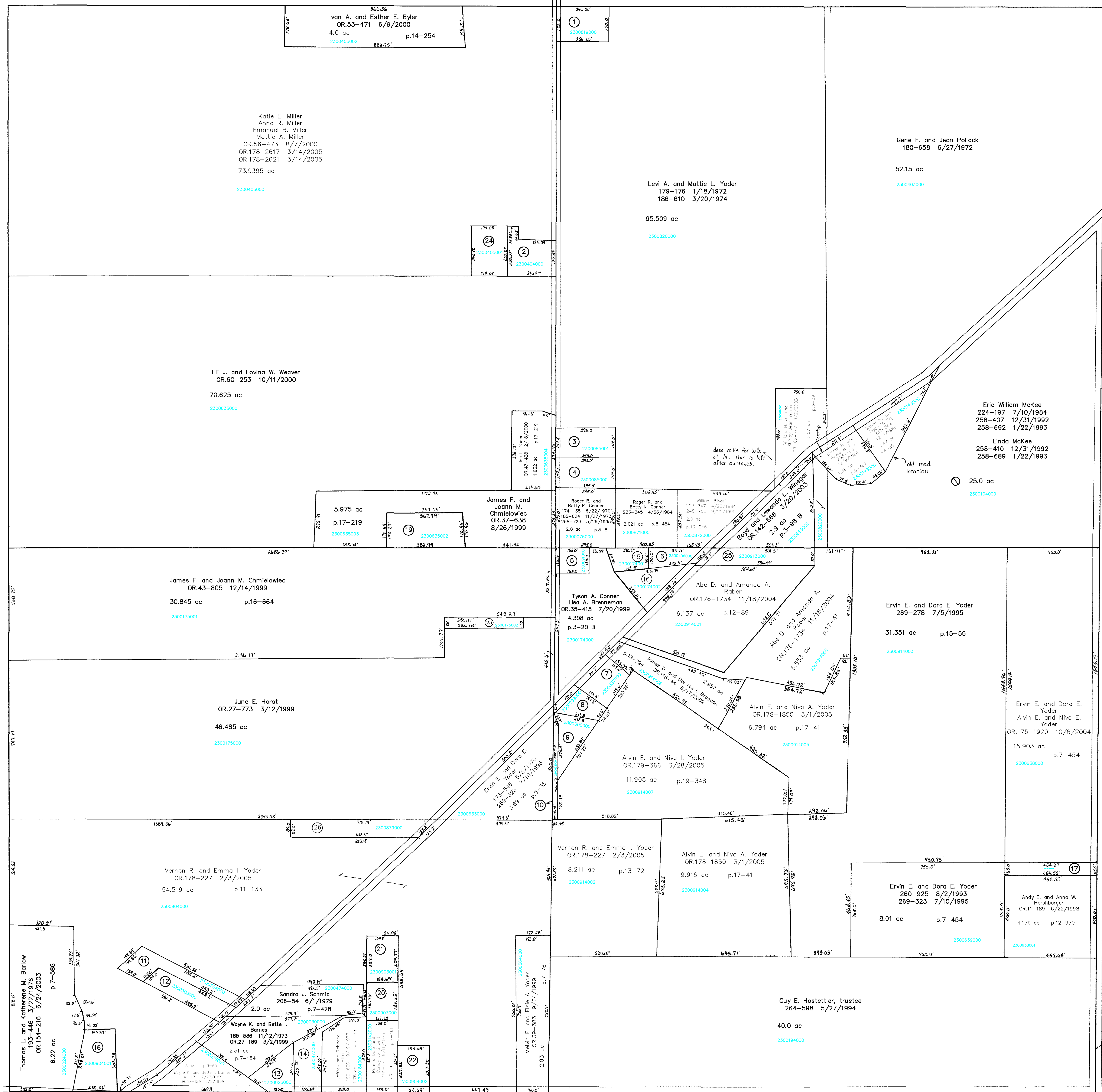


C.H. 575  
40' E 1/4  
Sec. 32

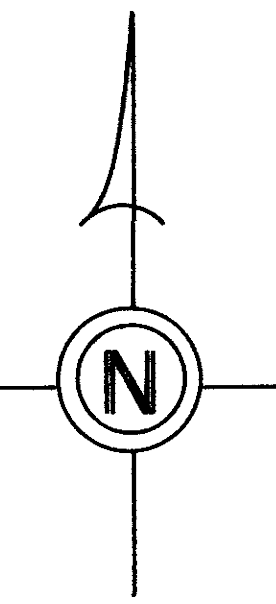


Sec. 6

Sec. 4

T.H. 573  
(Old T.H. 324)  
90' E 1/4

T.H. 507  
(Old T.H. 365)  
No E 1/4



- 2300819000 ① YODER DAVID L. AND EMMA R. OR.0125-395 10/15/2002 1.0 ac p.10-116
- 2300404000 ② RABER DAN D. AND LYDIA 202-554 7/1/1978 1.068 ac p.8-240
- 2300085001 ③ SMITH K. GREGORY 242-497 3/8/1989 1.0 ac p.5-8
- 2300085000 ④ SMITH K. GREGORY 242-497 3/8/1989 1.0 ac p.5-8
- 2300091000 ⑤ CONNER, TYSON A. BRENNEMAN, LISA A. OR.0035-416 7/20/1999 0.5 ac p.7-230
- 2300406000 ⑥ RABER DAVID A. AND LYDIA ANN OR.0051-668 5/8/2000 0.53 ac p.8-785
- 2300337000 ⑦ COMPTON ROBERT G. AND MARGARET A. OR.0052-354 5/18/2000 0.83 ac p.4-170
- 2300299000 ⑧ STENBAUER, TANNER J. MARTIN, JENNIFER L. OR.0167-1531 10/20/2003 0.56 ac p.4-170
- 2300300000 ⑨ STENBAUER, TANNER J. MARTIN, JENNIFER L. OR.0167-1531 10/20/2003 0.75 ac p.7-469
- 2300632000 ⑩ YODER ERVIN E. AND DORA E. 191-144 6/30/1975 269-323 7/10/1995 0.21 ac p.7-469
- 2300504000 ⑪ KARLAN BARBARA J. FKA SPITLER 199-134 8/8/1977 259-186 3/16/1993 1.0 ac
- 2300503000 ⑫ KARLAN BARBARA J. FKA SPITLER 199-134 8/8/1977 259-186 3/16/1993 1.0 ac p.7-80
- 2300025000 ⑬ BARNES DONALD AND EVELYN 174-358 7/31/1970 0.77 ac p.5-46
- 2300873000 ⑭ BARNES DONALD J. AND EVELYN P. 223-805 6/16/1984 0.946 ac p.11-5
- 2300174001 ⑮ RABER DAVID A. AND LYDIA ANN OR.0051-668 5/8/2000 0.49 ac p.12-73
- 2300174002 ⑯ RABER DAVID A. AND LYDIA ANN OR.0051-668 5/8/2000 1.006 ac p.12-932
- 2300638002 ⑰ YODER ERVIN E. AND DORA E. 260-925 8/2/1993 269-323 7/10/1995 0.678 ac p.14-263
- 2300904001 ⑱ LANDAW RAYMOND C. OR.0081-456 7/13/2001 1.256 ac p.14-638
- 2300635002 ⑲ CHMIELOWIEC JAMES F. AND JOANN M. OR.0037-640 8/26/1999 1.468 ac p.14-895
- 2300903000 ⑳ GILBERT RONALD AND CANDY 227-15 4/25/1985 0.649 ac p.10-625
- 2300903001 ㉑ Vernon R. and Emma I. Yoder OR.178-227 2/3/2005 0.809 ac p.16-433
- 2300904002 ㉒ GILBERT RONALD AND CANDY 278-425 5/29/1997 0.809 ac p.16-433
- 2300175002 ㉓ CHMIELOWIEC JAMES F. AND JOANN M. OR.0043-805 12/14/1999 0.45 ac p.17-25
- 2300405001 ㉔ RABER DAN D. AND LYDIA J. 243-499 5/26/1989 0.9925 ac p.12-222
- 2300913000 ㉕ YEATER ROBERT E. AND DELORIS J. OR.0051-200 5/1/2000 1.06 ac p.10-445
- 2300879000 ㉖ RABER IVAN D. AND SUSAN A. OR.0174-88 7/26/2004 1.312 ac p.10-291

T-17, R-14, Sec. 5  
RIPLEY TWP.

SCALE: 1" = 200'

Last Revision: 3/28/2005

RP-88

LET IT BE KNOWN, THIS MAP HAS BEEN PREPARED AS A REFERENCE GUIDE TO PROPERTY OWNERSHIP. WE BELIEVE THIS INFORMATION TO BE CORRECT AND CURRENT, HOWEVER, IT IS NOT INTENDED FOR ANY LEGAL USE, WHETHER IT BE IN SALES, TRANSFERS, TRADES, LEASES OF ANY TYPE, ETC., AND DO NOT ACCEPT RESPONSIBILITY FOR ERRORS OF ANY NATURE OR OMISSIONS CONTAINED HEREIN.