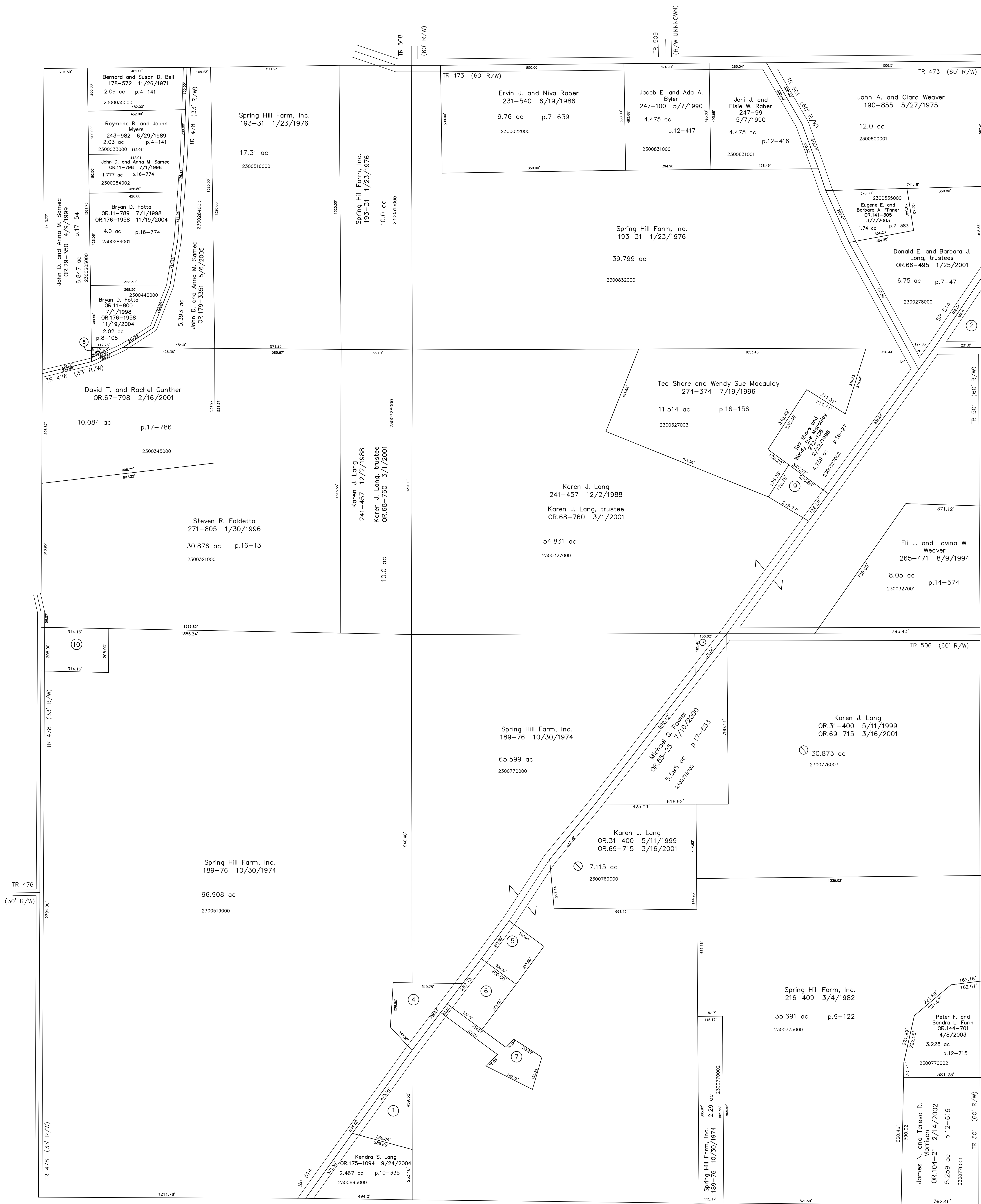
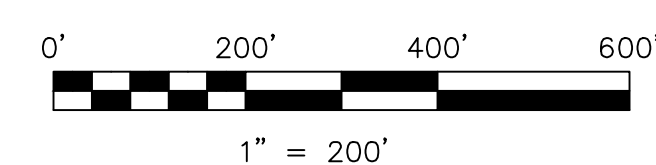


- 2300896000 ① Kendra S. Lang
OR. 114-403 6/3/2002
1.459 ac p.10-335
- 2300600000 ② John A. and Clara Weaver
190-855 5/27/1975
1.0 ac
- 2300770001 ③ Spring Hill Farm, Inc.
189-76 10/30/1974
0.29 ac
- 2300521000 ④ Spring Hill Farm, Inc.
208-403 1/8/1980
1.403 ac p.7-353
- 2300121000 ⑤ Harold G. and Lois L. Fowler
154-245 10/30/1964
1.0 ac p.4-39
- 2300122000 ⑥ Harold G. and Lois L. Fowler
194-808 7/14/1976
1.208 ac p.7-671
- 2300244000 ⑦ Wendell W. and June M. Lang
132-345 4/2/1956
285-61 6/30/1994
1.117 ac p.7-354
- 2300321001 ⑧ Bryan D. Fatta
OR. 11-800 7/1/1998
OR. 176-1958 11/19/2004
0.115 ac p.16-12
- 2300327004 ⑨ Mac Homes Unlimited, LLC
OR. 30-345 4/28/1999
0.846 ac p.17-80
- 2300519001 ⑩ Spring Hill Farm, Inc.
OR. 37-326 8/23/1999
1.5 ac p.12-965



Last Revision: 5/6/2005



LET IT BE KNOWN, THIS MAP HAS BEEN PREPARED AS A REFERENCE GUIDE TO PROPERTY OWNERSHIP. WE BELIEVE THIS INFORMATION TO BE CORRECT AND CURRENT, HOWEVER IT IS NOT INTENDED FOR ANY LEGAL USE, WHETHER IT BE IN SALES, TRANSFERS, TRUSTS, LEASES OF ANY TYPE, ETC., AND DO NOT ACCEPT RESPONSIBILITY FOR ERRORS OF ANY NATURE OR OMISSIONS CONTAINED HEREIN.

T-17, R-14, SEC. 7
RIPLEY TWP.
HOLMES COUNTY, OHIO

RP-02