

T.H. 513  
(Old T.H. 337)  
60' R/W

T.H. 516  
(Old T.H. 328)  
60' R/W

Sec. 95

C.H. 318  
60' R/W

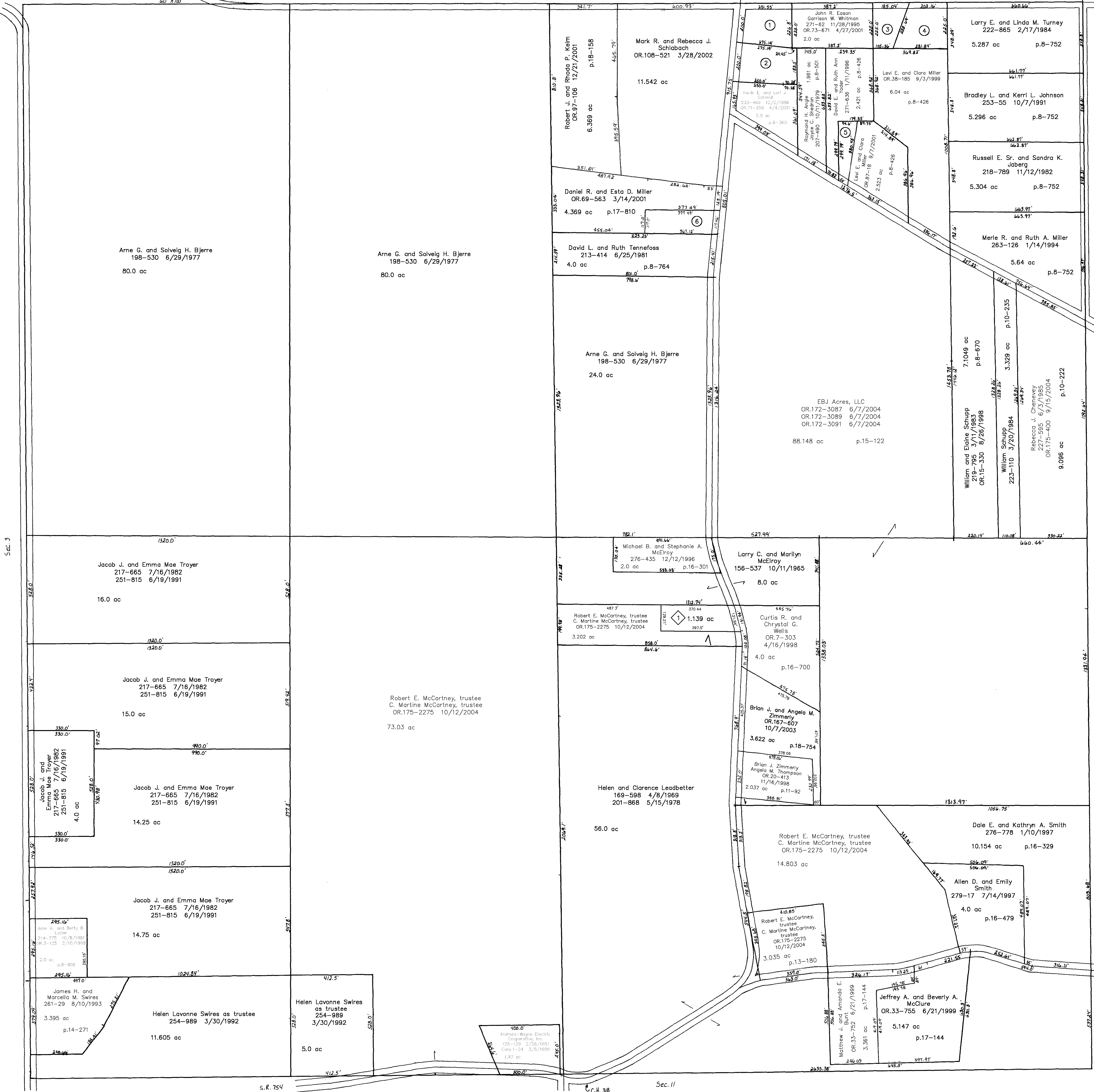
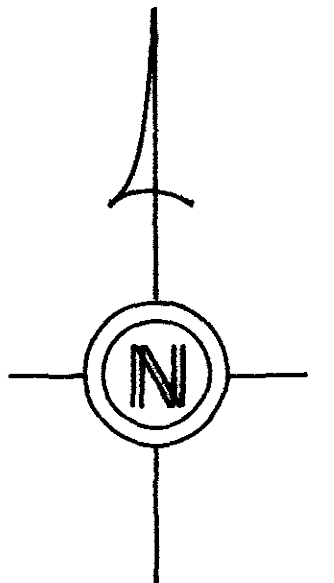
T.H. 507  
(Old T.H. 559)  
40' R/W

T.H. 516  
(Old T.H. 328)  
No R/W to C.H. 318

C.H. 329  
60' R/W

Sec. 1

T.H. 516  
(Old T.H. 327)  
No R/W



Sec. 3

T.H. 513  
(Old T.H. 337)  
60' R/W

S.R. 754

S.R. 754

C.H. 318  
60' R/W

Sec. 11

Cart Subdivision RP-23 A  
Plat 18-825 Platted 12/2/2003

T-17, R-14, Sec. 2  
RIPLEY TWP.

SCALE: 1" = 200'

Updated: 10/12/2004

LET IT BE KNOWN, THIS MAP HAS BEEN PREPARED AS A REFERENCE GUIDE TO PROPERTY OWNERSHIP. WE BELIEVE THIS INFORMATION TO BE CORRECT AND CURRENT, HOWEVER, IT IS NOT INTENDED FOR ANY LEGAL USE, WHETHER IT BE IN SALES, TRANSFERS, TRADES, LEASES OF ANY TYPE, ETC., AND DO NOT ACCEPT RESPONSIBILITY FOR ERRORS OF ANY NATURE OR OMISSIONS CONTAINED HEREIN.

RP-23