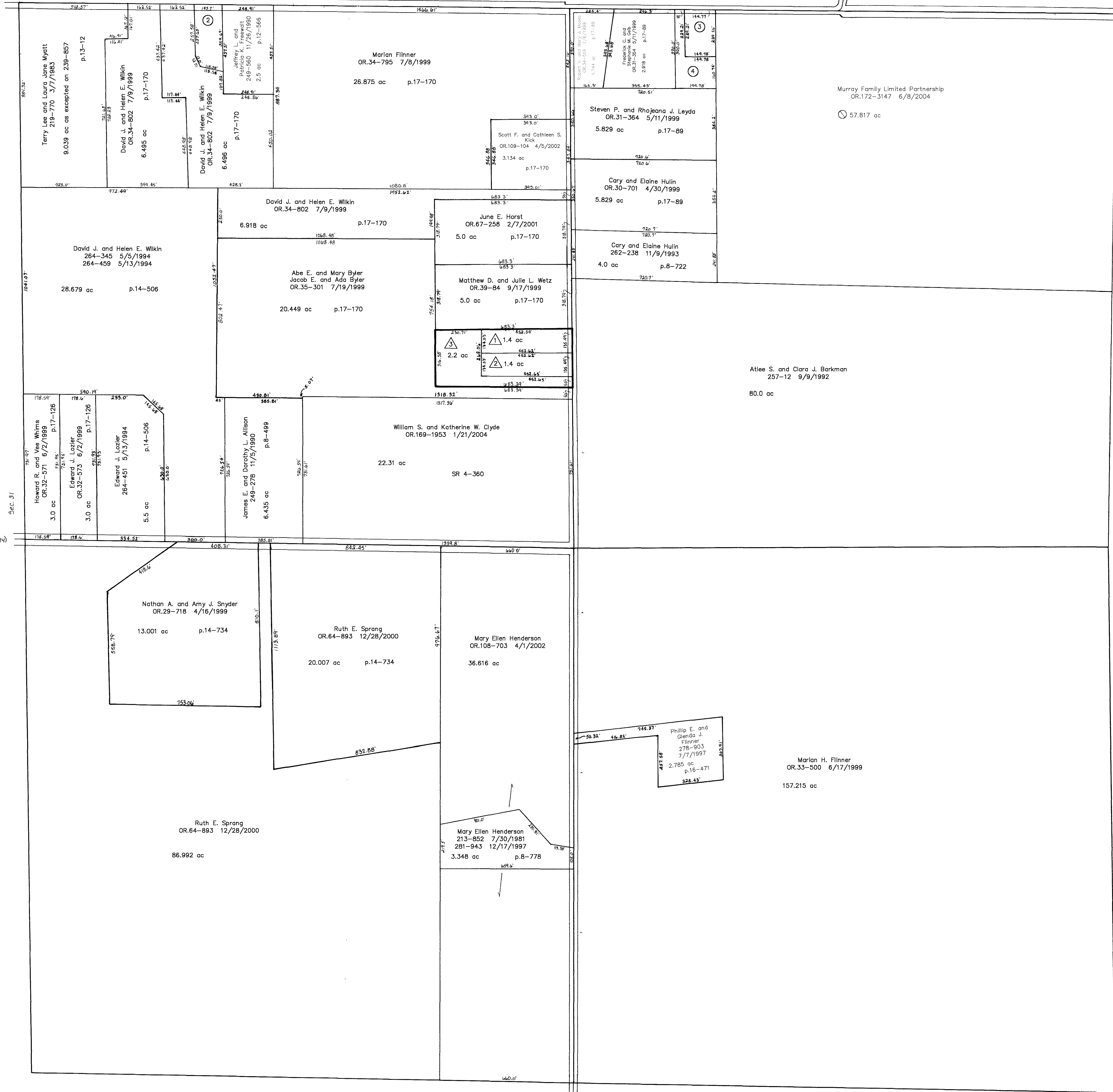


T.H. 511
(Old T.H. 2)
60' x 1/2 W

Sec. 29

C.H. 373
40' x 1/2 W

T.H. 511
Old T.H. 1



Sec. 31

T.H. 474
(Old T.H. 374)
60' x 1/2 W

Sec. 33

C.H. 373
40' x 1/2 W

Sec. 5

Updated: 7/1/2004

△ Southwest Construction Allotment No. 1 RP-9 A
Plat 17-289 Platted 10/27/1999

T-18, R-14, Sec. 32
RIPLEY TWP.

SCALE: 1" = 200'

LET IT BE KNOWN, THIS MAP HAS BEEN PREPARED AS A REFERENCE GUIDE TO PROPERTY OWNERSHIP. WE BELIEVE THIS INFORMATION TO BE CORRECT AND CURRENT, HOWEVER, IT IS NOT INTENDED FOR ANY LEGAL USE, WHETHER IT BE IN SALES, TRANSFERS, TRADES, LEASES OF ANY TYPE, ETC., AND DO NOT ACCEPT RESPONSIBILITY FOR ERRORS OF ANY NATURE OR OMISSIONS CONTAINED HEREIN.

RP-9