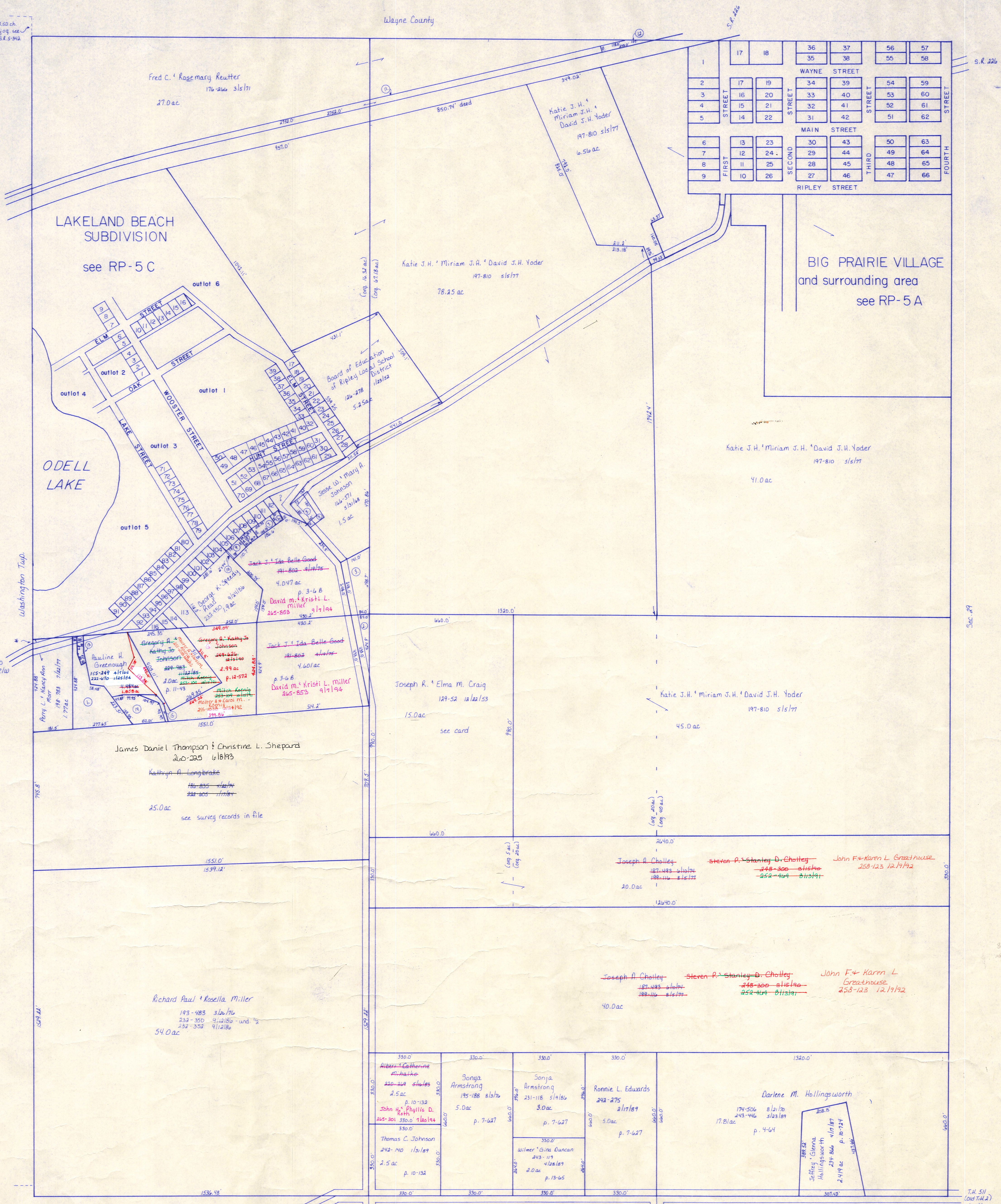


Inland so on (unless) Daniel Buzzard granted a 60' Easement through the NW 1/4 Sec. 30 to Ohio Pennsylvania Elk Company.



- ① Randall J. Rice 247-725 7/13/90
- ② Mary Margaret Willard 188-505 7/15/77 409 ac
- ③ Mary Margaret Willard 188-505 7/15/77 408 ac
- ④ Mary Margaret Willard 188-505 7/15/77 409 ac
- ⑤ Mary Margaret Willard 188-505 7/15/77 408 ac
- ⑥ Elma H. John E. Rush 188-557 3/10/77, 194-75 5/11/76 .05 ac
- ⑦ Elma H. John E. Rush 188-557 3/10/77, 194-75 5/11/76 .11 ac
- ⑧ Elma H. John E. Rush 188-557 3/10/77, 194-75 5/11/76 .11 ac
- ⑨ Elma H. John E. Rush 188-557 3/10/77, 194-75 5/11/76 .11 ac
- ⑩ Elma H. John E. Rush 188-557 3/10/77, 194-75 5/11/76 .11 ac
- ⑪ Elma H. John E. Rush 188-557 3/10/77, 194-75 5/11/76 .11 ac
- ⑫ Elma H. John E. Rush 188-557 3/10/77, 194-75 5/11/76 .11 ac
- ⑬ Elma H. John E. Rush 188-557 3/10/77, 194-75 5/11/76 .11 ac
- ⑭ Elma H. John E. Rush 188-557 3/10/77, 194-75 5/11/76 .11 ac
- ⑮ Elma H. John E. Rush 188-557 3/10/77, 194-75 5/11/76 .11 ac
- ⑯ Elma H. John E. Rush 188-557 3/10/77, 194-75 5/11/76 .11 ac
- ⑰ Elma H. John E. Rush 188-557 3/10/77, 194-75 5/11/76 .11 ac
- ⑱ Elma H. John E. Rush 188-557 3/10/77, 194-75 5/11/76 .11 ac
- ⑲ Elma H. John E. Rush 188-557 3/10/77, 194-75 5/11/76 .11 ac
- ⑳ Elma H. John E. Rush 188-557 3/10/77, 194-75 5/11/76 .11 ac

- ① Consolidated Rail Corporation 205-456 4/24/78 .12 ac
- ② Pauline H. Greenough 235-312 5/18/87 .018 ac p. 10-745
- ③ Randall J. Rice 247-725 7/13/90
- ④ Randall J. Rice 247-725 7/13/90

T-18, R-14, Sec. 30
RIPLEY TWP.

SCALE: 1" = 200'

RP-5

LET IT BE KNOWN, THIS MAP HAS BEEN PREPARED AS A REFERENCE GUIDE TO PROPERTY OWNERSHIP AND CURRENT, HOWEVER, IT IS NOT INTENDED FOR ANY LEGAL USE, WHETHER IT BE IN SALES, TRANSFERS, TRADES, LEASES OF ANY TYPE, ETC., AND DO NOT ACCEPT RESPONSIBILITY FOR ERRORS OF ANY NATURE OR OMISSIONS CONTAINED HEREIN.