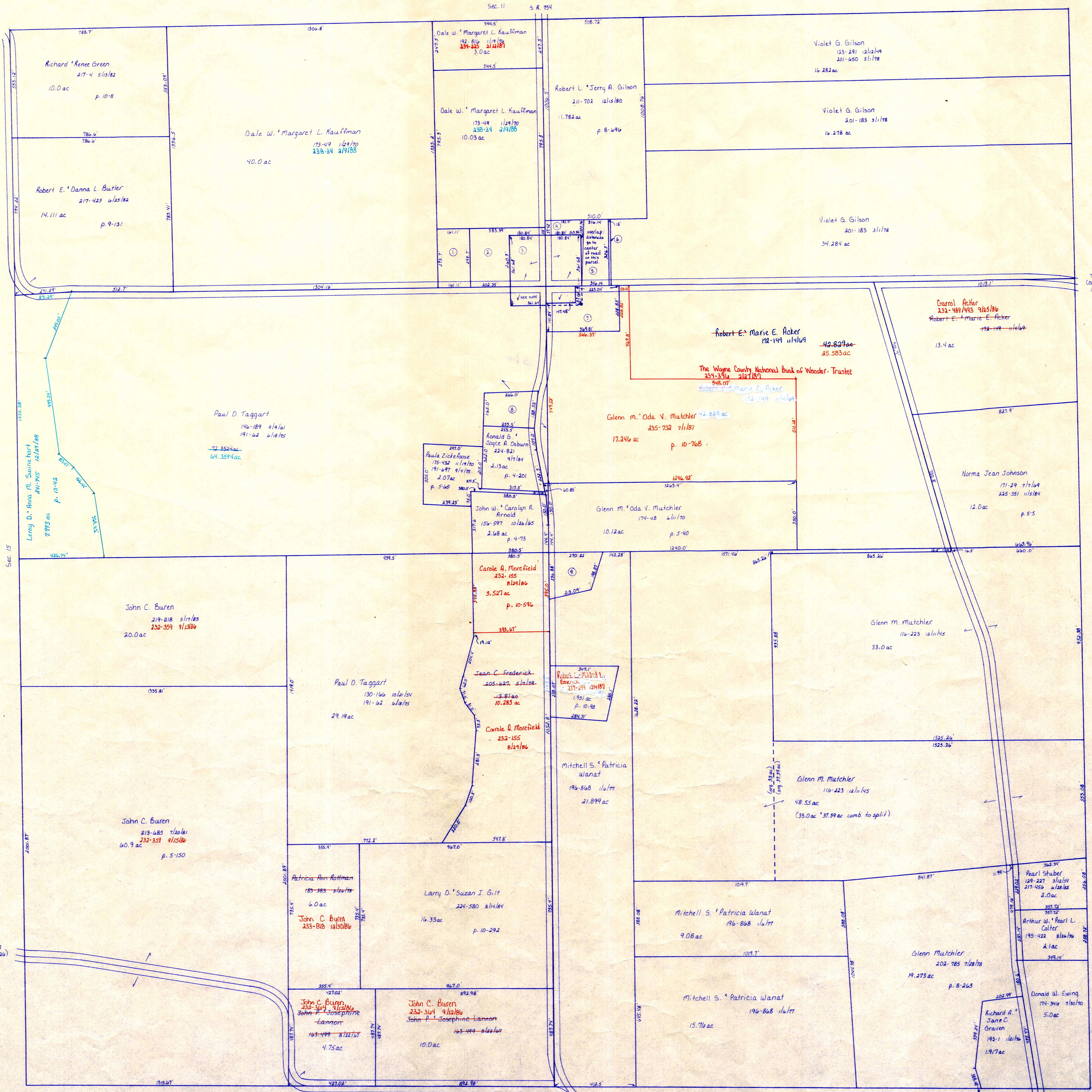


T.H. 506
(Old T.H. 317)
No R/W



T.H. 506
(Old T.H. 317)
No R/W

Note: See deed 228-512, plat 10-10-11
Paul O. Taggart deeded .414 ac to
Hopewell United Presbyterian Church
because his deed had no exception
for the small part of a 5.0 ac tract
the church owned on deed 2-10-11.
The .414 ac is not carried on a
separate card because it is completely
overlapped by the 3.0 ac description.

Sec. 14

T.H. 262
(Old T.H. 418)
No R/W

- ① Paul E. Carol A. Towner 187-897 7/1/74 1.086 ac p. 7-297
- ② Trustees of East Hopewell 99-200 5/1/1888 1.501 ac
- ③ Trustees of East Hopewell Congregation 2-605 5/1/1884 3.0 ac see S.R. 5-291
- ④ Trustees of East Hopewell Congregation 23-26 4/21/1858 2.76 ac
- ⑤ Trustees of Hopewell Cemetery Association 95-185 12/1/185 2.37 ac (overlap)
- ⑥ Trustees of Hopewell Cemetery Association 95-179 11/1/185 1.094 ac
- ⑦ Jeffrey S. & Nancy E. McMillen 204-685 1/26/79 1.651 ac p. 8-372
- ⑧ Mitchell J. & Danna J. Welch 246-1016 10/21/81
- ⑨ Michael Charles Taggart 191-1017 11/185 2.84-2.85 shares 1.25 ac p. 7-470

T-17, R-14, Sec. 14
RIPLEY TWP.

SCALE: 1" = 200'

PAID 12-23-85 RP-21

LET IT BE KNOWN, THIS MAP HAS BEEN PREPARED AS A REFERENCE GUIDE TO PROPERTY OWNERSHIP. WE BELIEVE THIS INFORMATION TO BE CORRECT AND CURRENT, HOWEVER, IT IS NOT INTENDED FOR ANY LEGAL USE, WHETHER IT BE IN SALES, TRANSFERS, TRADES, LEASES OR ANY TYPE, ETC., AND DO NOT ACCEPT RESPONSIBILITY FOR ERRORS OF ANY NATURE OR OMISSIONS CONTAINED HEREIN.