

R-25

R-25A

R-30

Lanny D. Hawkins  
OR.142-886 3/25/2003  
22.603 ac p.18-532  
2200059000

Lester W. Gray  
Robin L. Gray  
OR.0270-3882 12/31/2019  
15.129 ac. p.016-0181  
2200136006

R-25B

R-25

Summit County Association  
178-11 12/13/1902  
6.024 ac p. 1-144  
210677000

Trustees of Glenmont Cemetery Association  
173-04 11/11/1902  
1.2 ac  
210684000

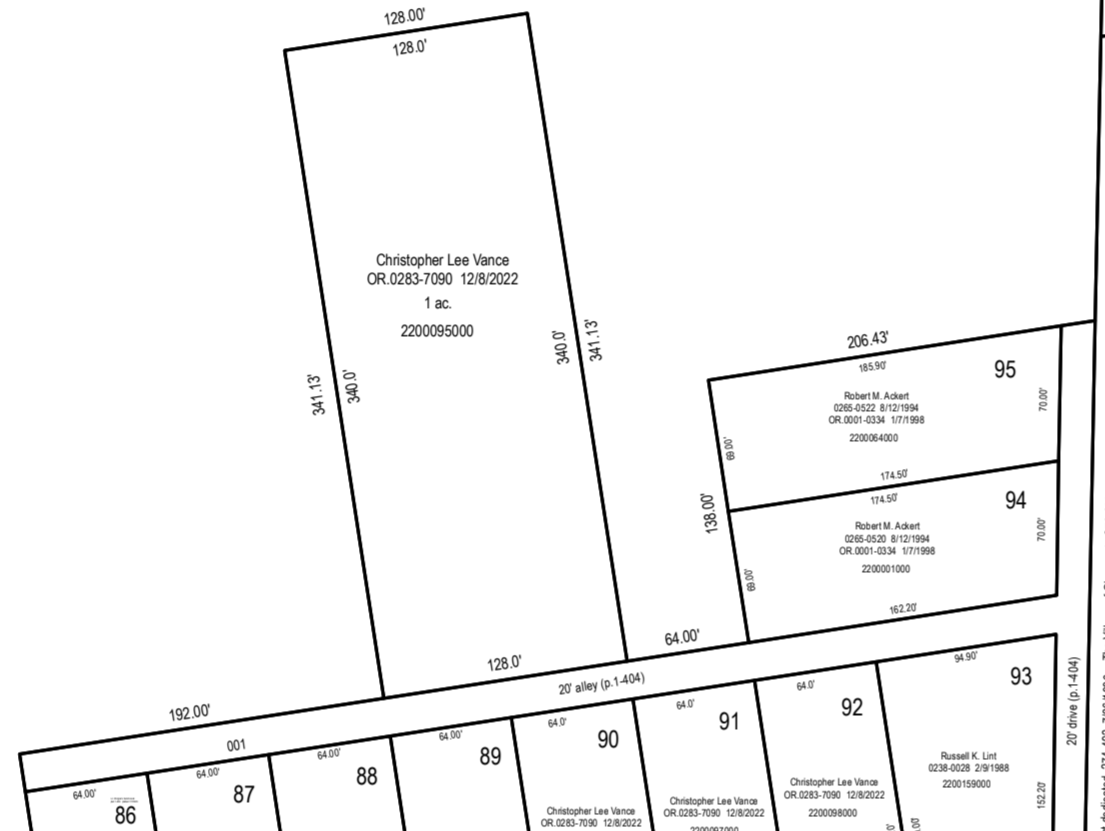
Trustees of Glenmont Cemetery Association  
173-04 11/11/1902  
1.2 ac  
210684000

Trustees of Glenmont Cemetery Association  
173-04 11/11/1902  
1.2 ac  
210684000

Brandon G. Bauer  
Nichole G. Bauer  
OR.0285-048 10/22/2016  
1.323 ac. p.19-3084  
2200117000

Alta Virginia Purdy  
OR.0283-037 10/22/2016  
1.807 ac. p.19-3084  
2200170002

Brandon Allen Stutzman  
OR.0279-2051 11/3/2021  
1 ac. p.016-0066  
2200136005



Denise L. Schaub  
OR.0201-001 10/09/2011  
0.783 ac. p.014-0084  
2200130000

Gal J. Shaffer  
OR.0201-001 10/09/2011  
0.783 ac. p.014-0084  
2200130000

Richard A. Morley  
Shirley A. Morley  
OR.0201-001 10/09/2011  
1.238 ac. p.016-0029  
2200137000

Lester W. Gray  
Robin L. Gray  
OR.0270-3882 12/31/2019  
1.281 ac. p.016-0261  
2200140000

Thomas T. Williams  
Bobbie M. Williams  
OR.0283-037 10/22/2016  
2 ac. p.016-0262  
2200130008

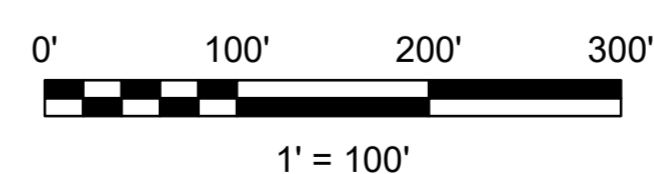
Andy C. (aka Andy Charles) Morris, Jr.  
OR.023-1215 11/7/2011  
1.02 ac. p.16-265  
2200136007

Andy C. Morris, Jr.  
OR.023-1215 11/7/2011  
1.02 ac. p.16-265  
2200136007

Andy C. (aka Andy Charles) Morris, Jr.  
OR.023-1215 11/7/2011  
1.02 ac. p.16-265  
2200136007

Andy C. (aka Andy Charles) Morris, Jr.  
OR.023-1215 11/7/2011  
1.02 ac. p.16-265  
2200136007

The Board of Commissioners of the Holmes County Park District  
OR.0191-1347 8/31/2006  
9.606 ac. p.016-0168  
2200186000



LET IT BE KNOWN, THIS MAP HAS BEEN PREPARED AS A REFERENCE GUIDE TO PROPERTY OWNERSHIP. WE BELIEVE THIS INFORMATION TO BE CORRECT AND CURRENT, HOWEVER IT IS NOT INTENDED FOR ANY LEGAL USE, WHETHER IT BE SALES, TRANSFERS, TRADERS, LEASES OF ANY TYPE, ETC. AND DO NOT ACCEPT RESPONSIBILITY FOR ERRORS OF ANY NATURE OR OMISSIONS CONTAINED HEREIN.

S.F.T.  
new survey required  
for next transfer

Last Revision: 1/3/2023

(east part)  
Village of Glenmont  
Sec. 1, T-8, R-9  
Richland Twp.  
Holmes County, Ohio

R-25B