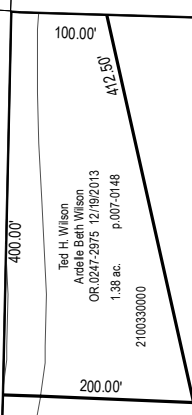


R-18

R-23

R-28



TR 24 40' RW

Steven D. and Carol K. Watts
240-808 10/12/1988
38.62 ac
2100336000

Wilfried W. Ruenup, trustee
OR.244-807 6/6/2013
20.0 ac
2100423000
(see Dv 101-326 for correct description)

Colin Dawson and
Nancy S. Dawson as trustees
OR.0248-7139 5/28/2014
40.0 ac
2100319000

Kel-Tek of Ohio, Ltd.
OR.0258-2486 11/15/2016
40.0 ac
2100035000

Steven D. and Carol K. Watts
240-808 10/12/1988
20.0 ac
2100336002

Steven D. and Carol K. Watts
240-808 10/12/1988
40.0 ac
2100336001

Steven D. and Carol K. Watts
240-808 10/12/1988
40.0 ac
2100337000

Steven D. and Carol K. Watts
240-808 10/12/1988
40.0 ac
2100338000

Kel-Tek of Ohio, Ltd.
OR.0258-2486 11/15/2016
40.0 ac
2100034000

T8 R9
Sec 20

R-17

R-27

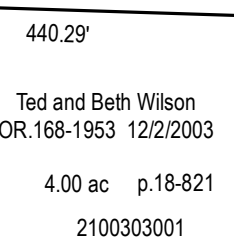
TR 24 40' RW

Donald M. and Sandra B. McPherson, trustees
inter vivos trust
256-372 7/24/1992
40.0 ac
2100332000

Steven D. and Carol K. Watts
240-808 10/12/1988
40.0 ac
2100335000

Steven D. and Carol K. Watts
240-808 10/12/1988
40.0 ac
2100334000

Joseph T. Jr. and Carol I. Martuch
157-83 11/15/1983
222-689 12/19/1983
40.0 ac
2100322000



Daniel G. Hilson, trustee
Or.225-1114 4/15/2011
36.0 ac
2100303000

Joseph T. Jr. and Carol I. Martuch
157-83 11/15/1983
222-689 12/19/1983
40.0 ac
2100320000

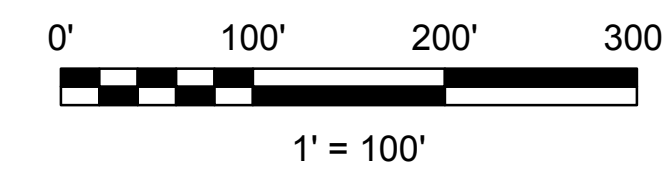
Joseph T. Jr. and Carol I. Martuch
157-83 11/15/1983
222-689 12/19/1983
80.0 ac
2100321000

TR 24 40' RW

R-16

R-21

R-26



LET IT BE KNOWN, THIS MAP HAS BEEN PREPARED AS A REFERENCE GUIDE TO PROPERTY OWNERSHIP. WE BELIEVE THIS INFORMATION TO BE CORRECT AND CURRENT. HOWEVER, IT IS NOT INTENDED FOR ANY LEGAL USE, WHETHER IT BE SALES, TRANSFERS, TRADES, LEASES OF ANY TYPE, ETC. AND DO NOT ACCEPT RESPONSIBILITY FOR ERRORS OF ANY NATURE OR OMISSIONS CONTAINED HEREIN.

S.F.T.
new survey required
for next transfer

Last Revision: 12/30/2016



Sec. 20, T-8, R-9
Richland Twp.
Holmes County, Ohio

R-22