

R-13

R-18

R-23

R-12

R-22

R-11

R-16

R-21

Petronilla M. Schopfer
 228-370 8/13/1985
 OR 238-1932 10/16/2012
 22.0 ac
 2100437001

John James Reiheld, trustee
 OR 188-939 4/24/2006
 78.227 ac
 2100496000

Petronilla M. Schopfer
 228-370 8/13/1985
 OR 238-1932 10/16/2012
 130.25 ac
 2100437000

Barnes Family Farm, Ltd.
 OR 48-72 3/1/2000
 80.0 ac
 2100036000

Ted H. Wilson
 Annette Beth Wilson
 OR 247-234 2/15/2013
 4.123 ac p1-688
 2100473000

Ben R. and Alma A. Hershberger
 OR 237-835 8/27/2012
 80.55 ac total p 19-1387
 Sec 19 = 75.024 ac
 Sec 22 = 5.526 ac
 2100425001

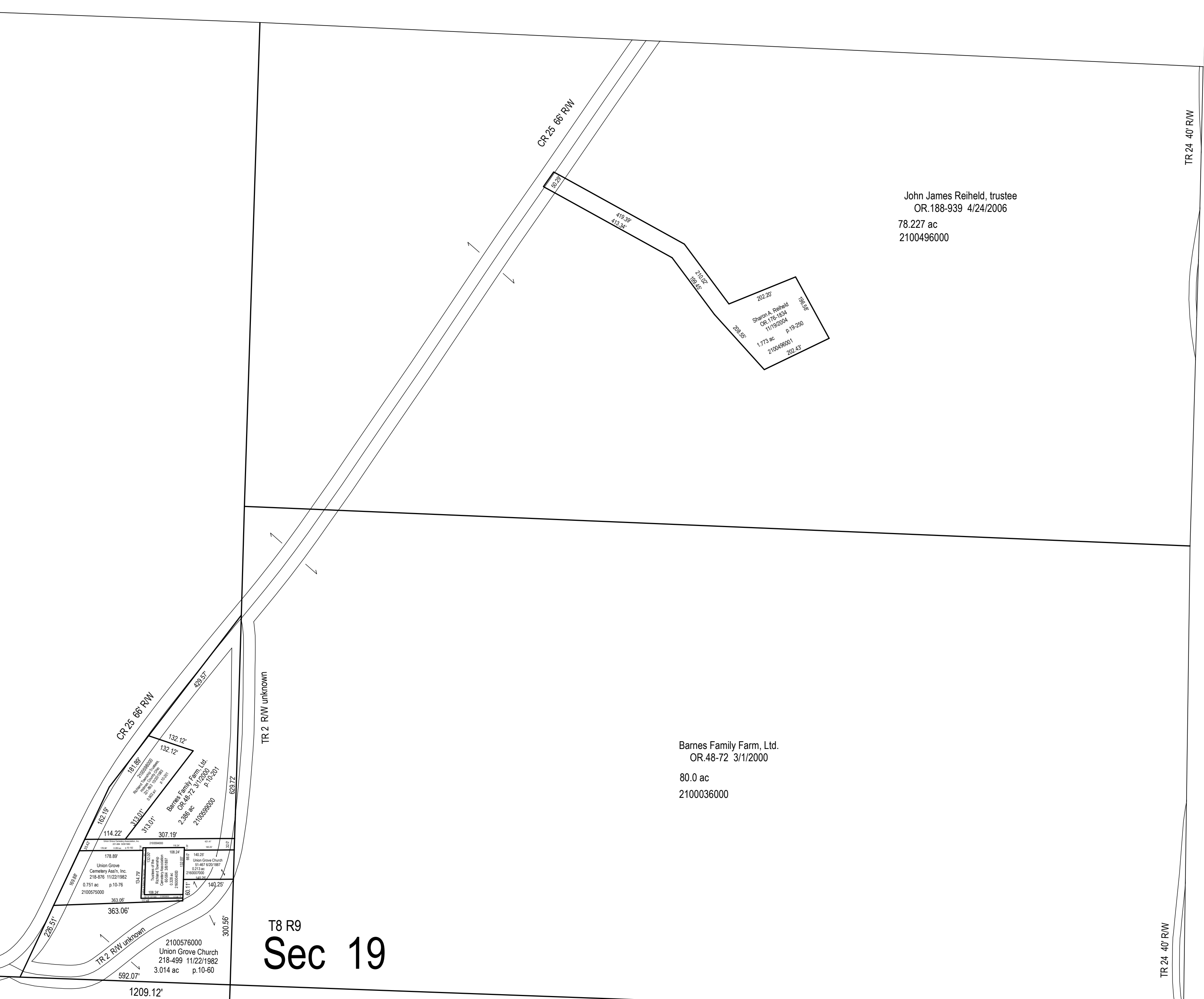
Hidden Falls Sub
 List 1
 10.354 ac
 p.2-480
 2100490000

Wayne E. Thompson
 OR 212-180
 8/4/2009

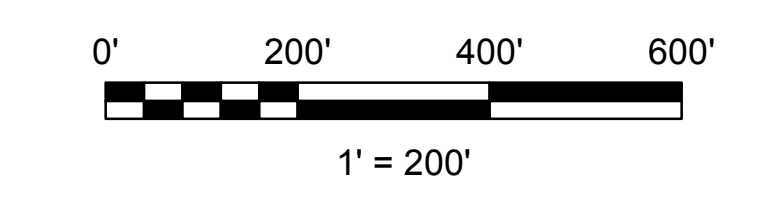
Open Road Farm, Ltd.
 OR 0250-0439 9/15/2014
 74.17 ac.
 2100506000

Open Road Farm, Ltd.
 OR 0250-0439 9/15/2014
 21.0 ac.
 2100505000

Open Road Farm, Ltd.
 OR 0250-0439 9/15/2014
 59.0 ac.
 2100504000



T8 R9
Sec 19



LET IT BE KNOWN, THIS MAP HAS BEEN PREPARED AS A REFERENCE GUIDE TO PROPERTY OWNERSHIP. WE BELIEVE THIS INFORMATION TO BE CORRECT AND CURRENT, HOWEVER IT IS NOT INTENDED FOR ANY LEGAL USE, WHETHER IT BE SALES, TRANSFERS, TRADES, LEASES OF ANY TYPE, ETC. AND DO NOT ACCEPT RESPONSIBILITY FOR ERRORS OF ANY NATURE OR OMISSIONS CONTAINED HEREIN.

S.F.T.
 new survey required
 for next transfer

Last Revision: 12/31/2014

**Sec. 19, T-8, R-9
 Richland Twp.
 Holmes County, Ohio**

R-17