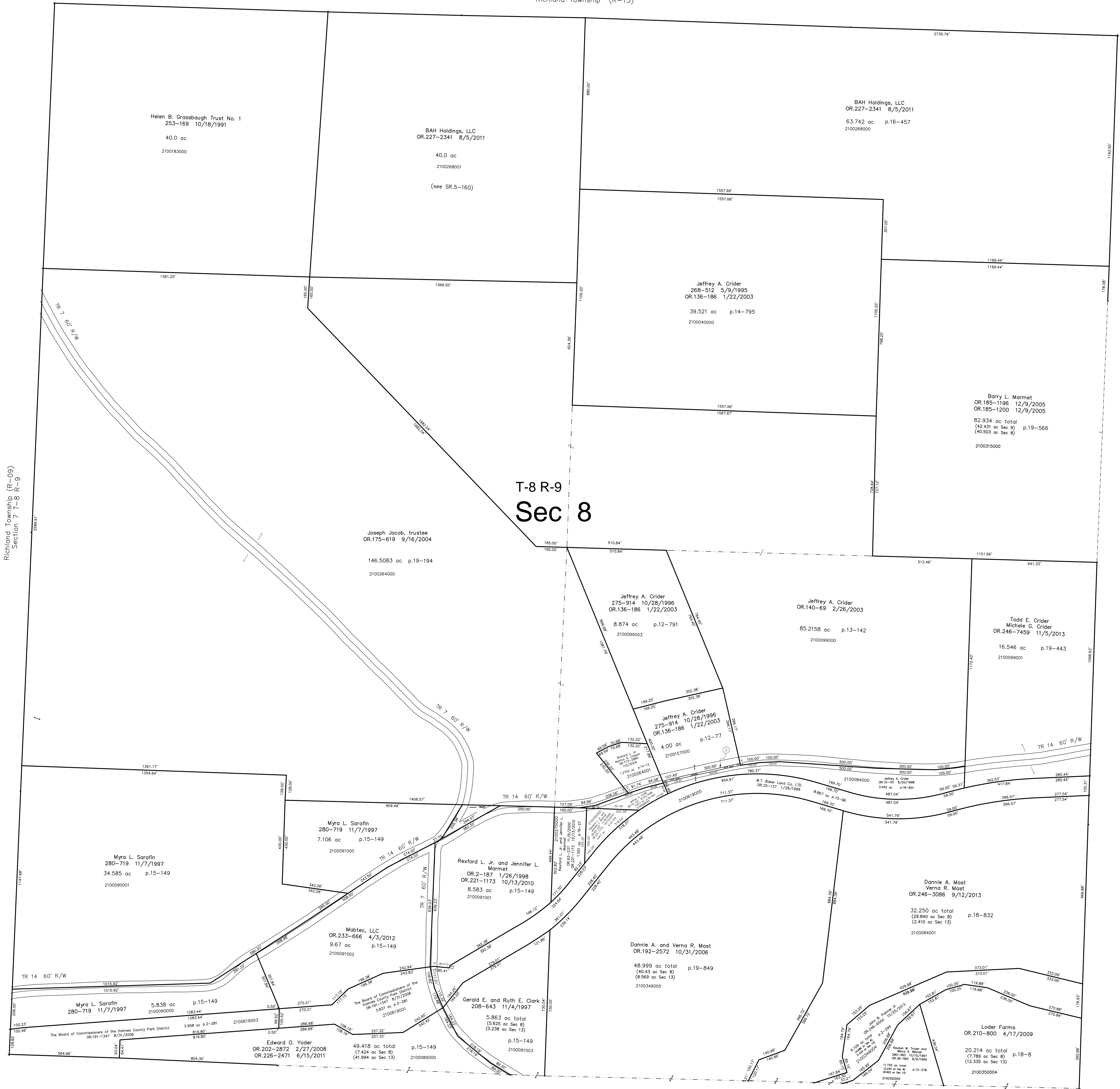
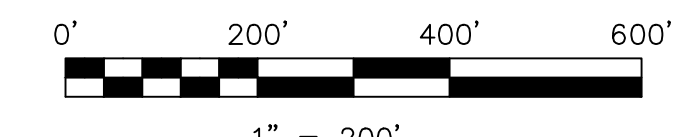


Section 3 T-8 R-9
Richland Township (R-15)



Section 13 T-8 R-9
Richland Township (R-13)

2100099002 Jeffrey A. Crider
275-914 10/28/1996
OR.136-186 1/22/2003
0.0914 ac p.12-791



S.F.T. new survey required
for next transfer

LET IT BE KNOWN THIS MAP HAS BEEN PREPARED AS A REFERENCE
GUIDE TO PROPERTY OWNERSHIP. WE BELIEVE THIS INFORMATION TO
BE CORRECT AND CURRENT. HOWEVER IT IS NOT INTENDED FOR ANY
LEGAL USE, WHETHER IT BE IN SALES, TRANSFERS, TRADES, LEASES
OF ANY TYPE, ETC., AND DO NOT ACCEPT RESPONSIBILITY FOR
ERRORS OF ANY NATURE OR OMISSIONS CONTAINED HEREIN.

Last Revision: 11/5/2013

**T-8, R-9, Section 8
Richland Twp.
Holmes County, Ohio**

R-14