

Section 25 T-8 R-9
Richland Township (R-25)

(R-30)
Sec 5
T-8 R-8

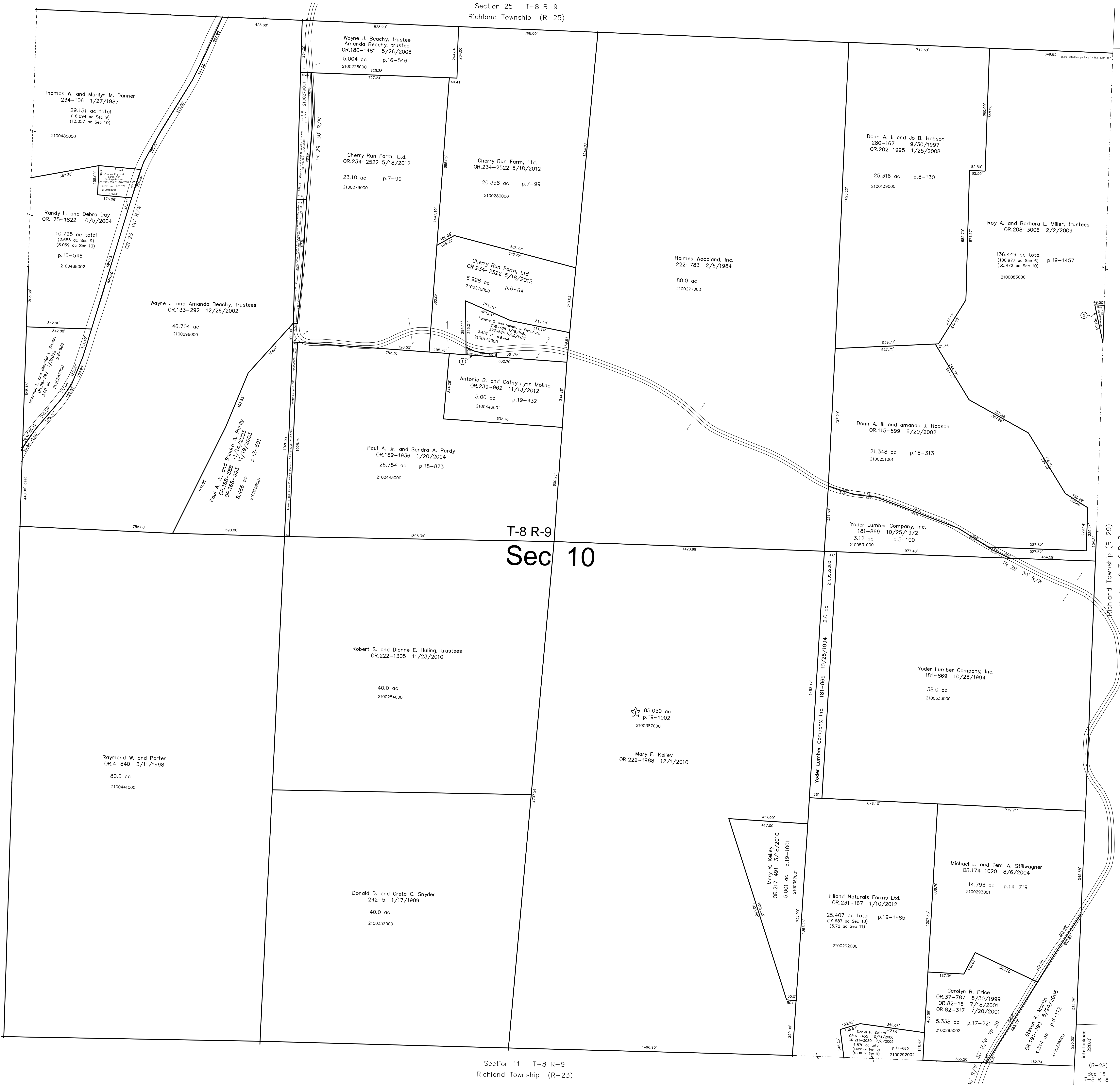
Richland Township (R-19)
Section 9 T-8 R-9

Richland Township (R-29)
Section 6 T-8 R-8

T-8 R-9
Sec 10

(R-28)
Sec 15
T-8 R-8

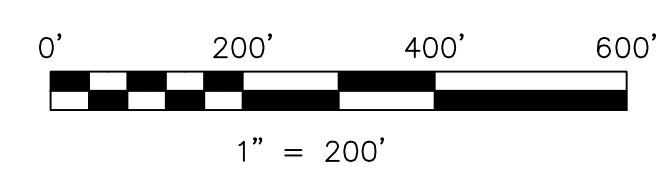
Section 11 T-8 R-9
Richland Township (R-23)



2100142001 ① Antonio B. and Cathy Lynn Malino
OR.239-862 11/13/2012
0.082 ac p.19-432

☆ Tri-County Enterprises Subdivision
p.19-1002 plotted 4/30/2007

2100666000 ② Roy A. and Barbara L. Miller, trustees
OR.208-3009 2/2/2009
0.113 ac p.19-1457



S.F.T. new survey required
for next transfer

LET IT BE KNOWN, THIS MAP HAS BEEN PREPARED AS A REFERENCE
GUIDE TO PROPERTY OWNERSHIP. WE BELIEVE THIS INFORMATION TO
BE CORRECT AND CURRENT, HOWEVER IT IS NOT INTENDED FOR ANY
LEGAL USE, WHETHER IT BE IN SALES, TRANSFERS, TRADES, LEASES
OF ANY TYPE, ETC., AND DO NOT ACCEPT RESPONSIBILITY FOR
ERRORS OF ANY NATURE OR OMISSIONS CONTAINED HEREIN.

Last Revision: 11/13/2012

T-8, R-9, Section 10
Richland Twp.
Holmes County, Ohio

R-24