

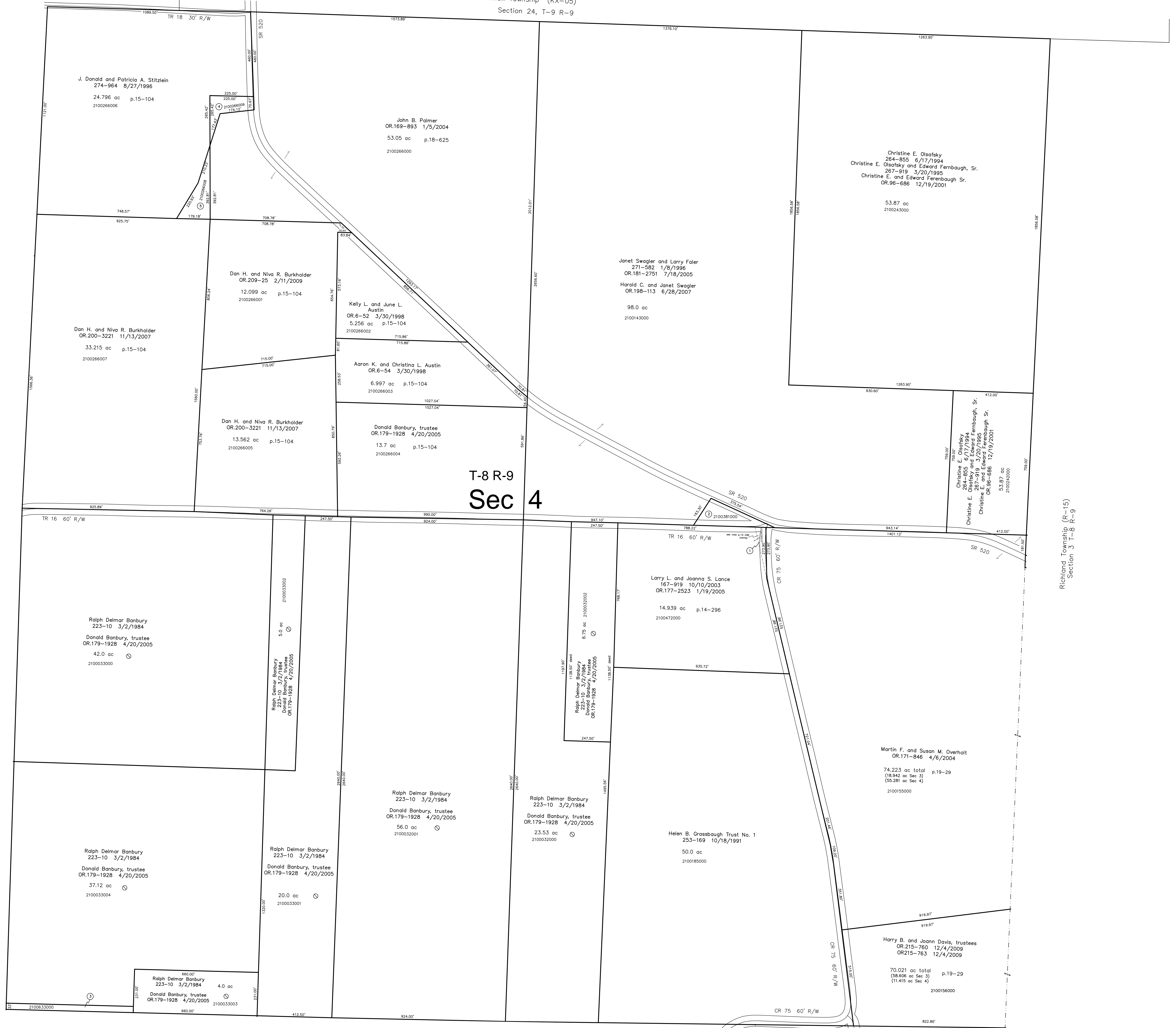
(KX-01)  
Section 25, T-9 R-9

Knox Township (KX-05)  
Section 24, T-9 R-9

Richland Township (R-05)  
Section 5 T-8 R-9

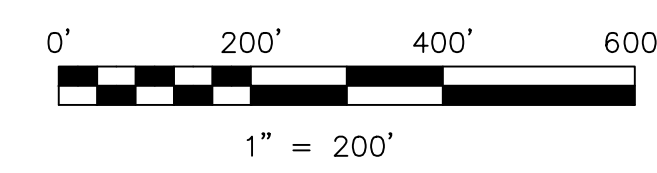
Richland Township (R-15)  
Section 3 T-8 R-9

# T-8 R-9 Sec 4



Section 7 T-8 R-9  
Richland Township (R-09)

- 2100634000 ① Donald D. Overholt  
253-154 10/17/1991  
253-157 10/17/1991  
0.18 ac calc  
(see note on p.14-296)
- 2100381000 ② unknown?  
?? Lucy Parsons ??  
107-556 7/7/1938  
(see DV.77-489 for correct description)  
0.25 ac
- 2100633000 ③ unknown?  
?? John Workman ??  
19-455 3/7/1854
- 2100266009 ④ J. Donald and Patricia A. Stitzlein, co-trustees  
OR.195-1351 3/7/2007  
0.551 ac p.19-89
- 2100266008 ⑤ John B. Palmer  
OR.172-2468 6/1/2004  
0.683 ac p.19-89



S.F.T. new survey required  
for next transfer

LET IT BE KNOWN, THIS MAP HAS BEEN PREPARED AS A REFERENCE GUIDE TO PROPERTY OWNERSHIP. WE BELIEVE THIS INFORMATION TO BE CORRECT AND CURRENT, HOWEVER IT IS NOT INTENDED FOR ANY LEGAL USE, WHETHER IT BE IN SALES, TRANSFERS, TRADES, LEASES OF ANY TYPE, ETC., AND DO NOT ACCEPT RESPONSIBILITY FOR ERRORS OF ANY NATURE OR OMISSIONS CONTAINED HEREIN.

Last Revision: 12/4/2009  
**T-8, R-9, Section 4**  
**Richland Twp.**  
**Holmes County, Ohio**

# R-10