

Section 12 T-8 R-9
Richland Township (R-18)



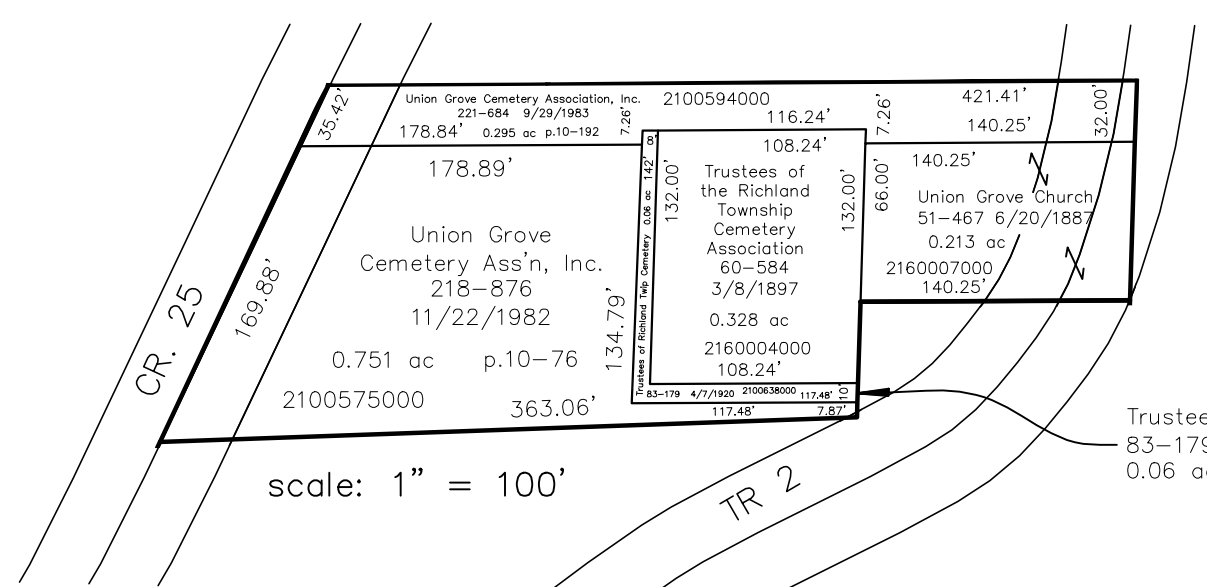
Richland Township (R-12)
Section 18 T-8 R-9

Richland Township (R-22)
Section 20 T-8 R-9

T-8 R-9
Sec 19

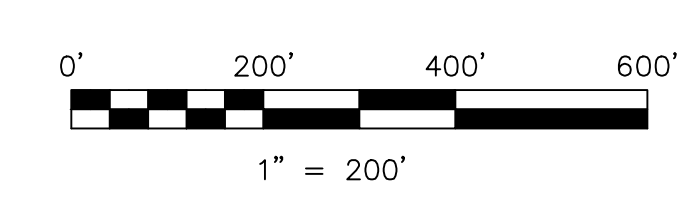
Section 22 T-8 R-9
Richland Township (R-16)

Hidden Falls Subdivision
p.2-480 plotted 7/10/2009



Trustees of Richland Township Cemetery
83-179 4/7/1920
0.06 ac 2100638000

S.F.T. new survey required
for next transfer



LET IT BE KNOWN, THIS MAP HAS BEEN PREPARED AS A REFERENCE GUIDE TO PROPERTY OWNERSHIP. WE BELIEVE THIS INFORMATION TO BE CORRECT AND CURRENT, HOWEVER IT IS NOT INTENDED FOR ANY LEGAL USE, WHETHER IT BE IN SALES, TRANSFERS, TRUSTS, LEASES OF ANY TYPE, ETC., AND DO NOT ACCEPT RESPONSIBILITY FOR ERRORS OF ANY NATURE OR OMISSIONS CONTAINED HEREIN.

Last Revision: 11/24/2009

T-8, R-9, Section 19
Richland Twp.
Holmes County, Ohio

R-17