

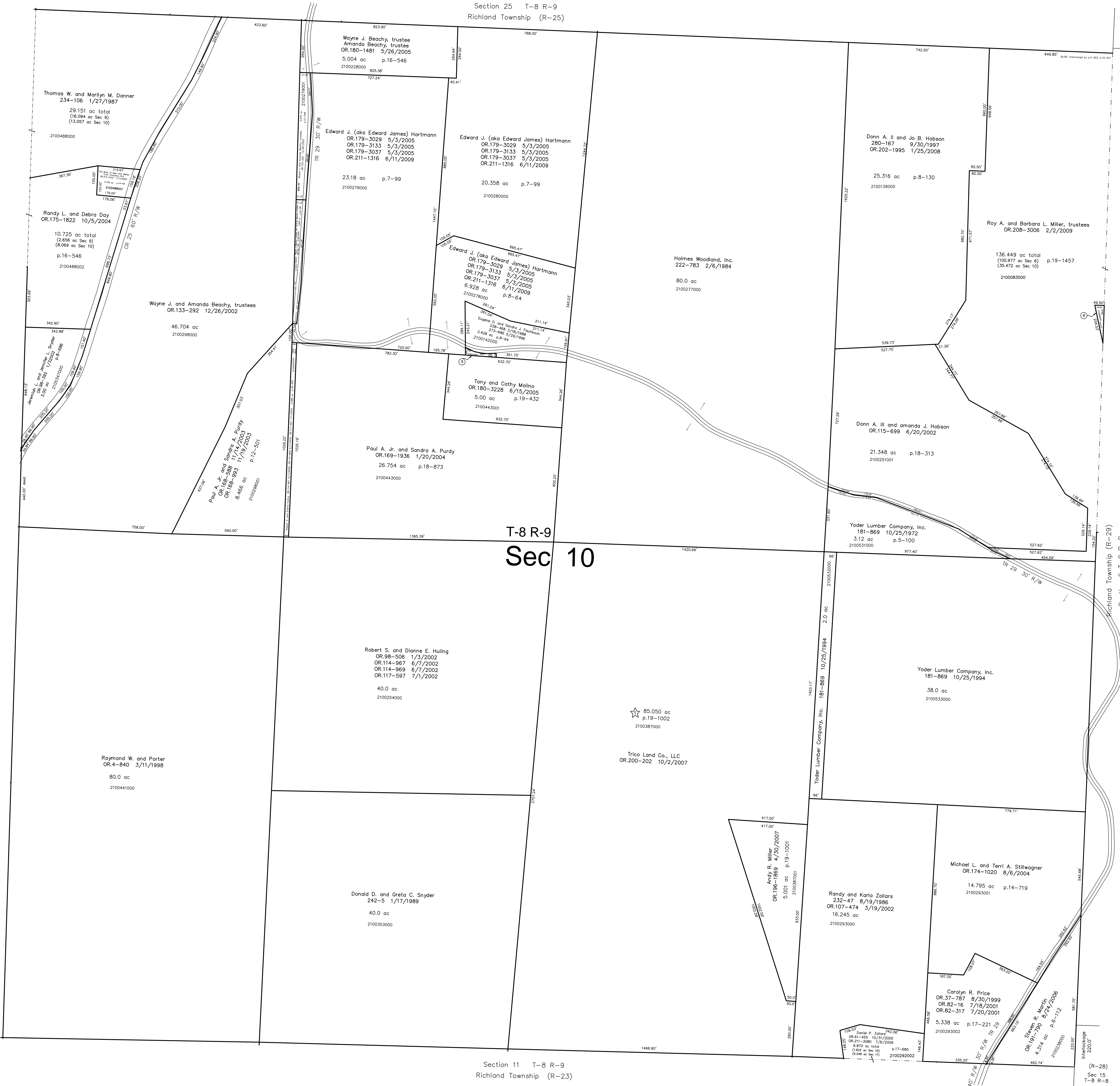
Section 25 T-8 R-9
Richland Township (R-25)

(R-30)
Sec 5
T-8 R-8

Richland Township (R-19)
Section 9 T-8 R-9

Richland Township (R-29)
Section 6 T-8 R-8

T-8 R-9
Sec 10



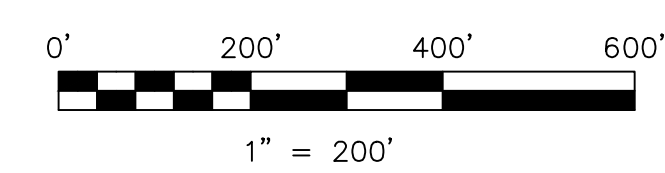
Section 11 T-8 R-9
Richland Township (R-23)

(R-28)
Sec 15
T-8 R-8

2100142001 ① Tony and Cathy Molina
OR.181-179 6/21/2005
0.082 ac p.19-432

2100666000 ② Roy A. and Barbara L. Miller, trustees
OR.208-3009 2/2/2009
0.113 ac p.19-1457

Tri-County Enterprises Subdivision
p.19-1002 plotted 4/30/2007



S.F.T. new survey required
for next transfer

LET IT BE KNOWN, THIS MAP HAS BEEN PREPARED AS A REFERENCE
GUIDE TO PROPERTY OWNERSHIP. WE BELIEVE THIS INFORMATION TO
BE CORRECT AND CURRENT, HOWEVER IT IS NOT INTENDED FOR ANY
LEGAL USE, WHETHER IT BE IN SALES, TRANSFERS, TRADES, LEASES
OF ANY TYPE, ETC., AND DO NOT ACCEPT RESPONSIBILITY FOR
ERRORS OF ANY NATURE OR OMISSIONS CONTAINED HEREIN.

Last Revision: 11/3/2009

T-8, R-9, Section 10
Richland Twp.
Holmes County, Ohio

R-24