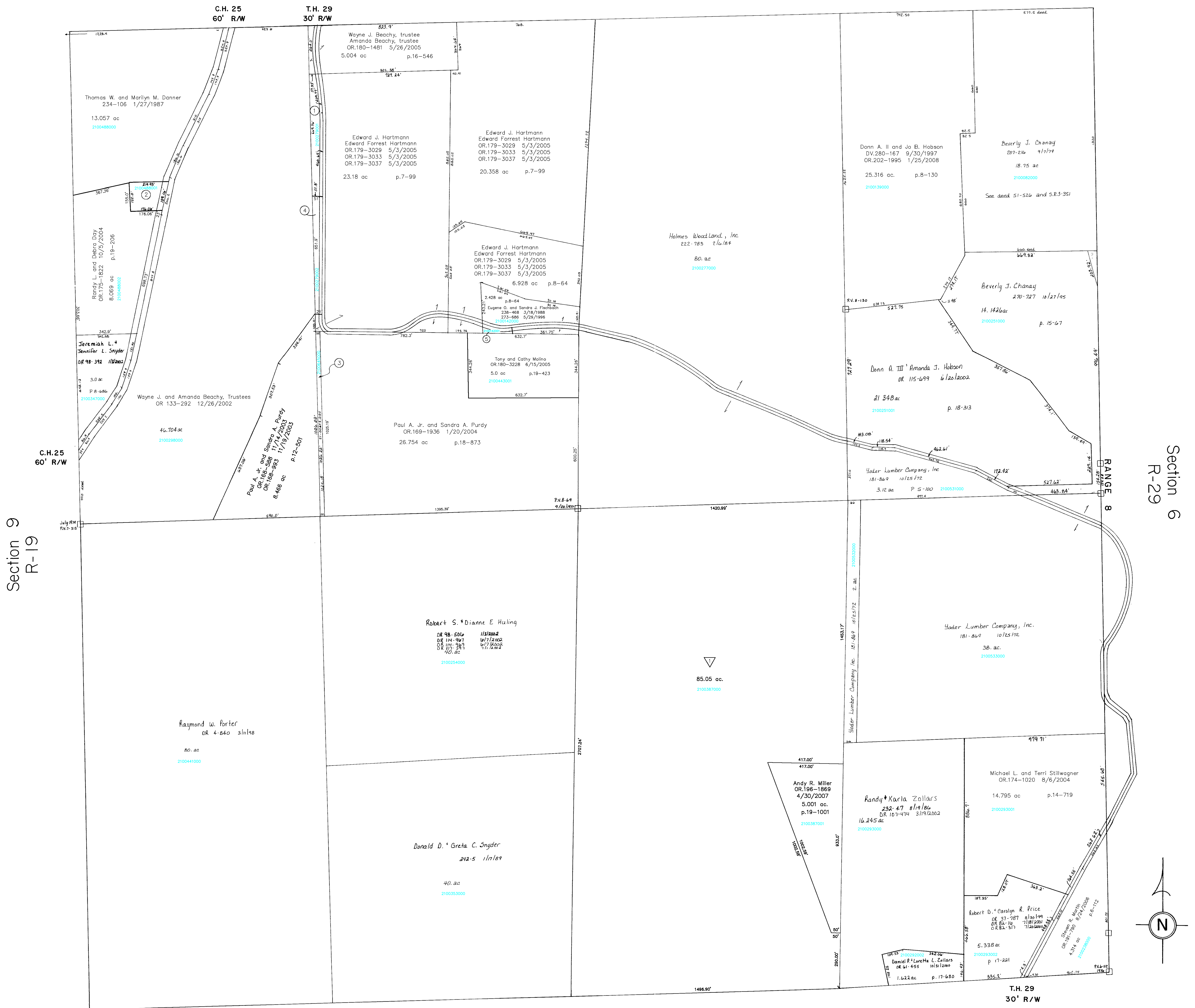


Section I
R-25



- 2100279001 ① BEACHY WAYNE J. AND AMANDA TRUSTEES
OR.0133-292 12/26/2002
0.976 ac p.12-548
- 2100488000 ② Richard B. Schaub
OR.178-708 2/11/2005
0.704 ac p.14-65
- 2100645000 ③ HULING ROBERT S. AND DIANNE E.
OR.0098-506 1/3/2002
OR.0114-987 6/7/2002
OR.0114-989 6/7/2002
OR.0117-597 7/1/2002
0.589 ac p.18-305
- 2100279002 ④ Wayne J. Beachy, trustee
Amanda Beachy, trustee
OR.180-1481 5/26/2005
0.663 ac p.19-126

- Tri-County Enterprises Subdivision
p.19-1002 plotted 4/30/2007
- 2100387000 Trico Land Co., LLC.
OR.200-202 10/2/2007
85.05 ac p.19-1002

Section II
R-23

T-8, R-9, Sec. 10
RICHLAND TWP.
SCALE 1" = 200'

Last Revision: 1/25/2008

LET IT BE KNOWN, THIS MAP HAS BEEN PREPARED AS A REFERENCE GUIDE TO PROPERTY OWNERSHIP. WE BELIEVE THIS INFORMATION TO BE CORRECT AND CURRENT, HOWEVER, IT IS NOT INTENDED FOR ANY LEGAL USE, WHETHER IT BE IN SALES, TRANSFERS, TRADES, LEASES OF ANY TYPE, ETC., AND DO NOT ACCEPT RESPONSIBILITY FOR ERRORS OF ANY NATURE OR OMISSIONS CONTAINED HEREIN.

R-24