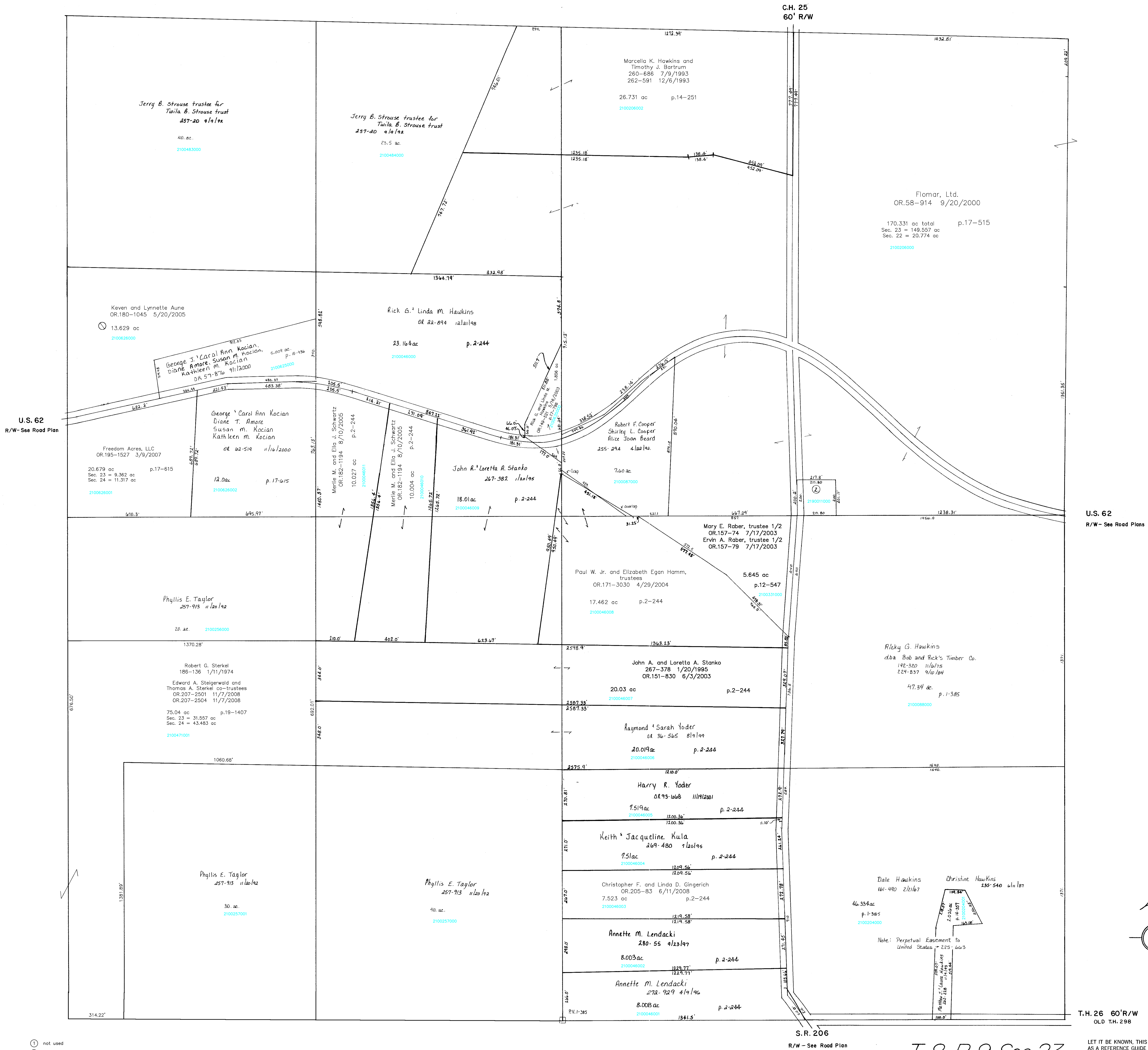


R-12
Section 18

Section 14

R-16
Section 22



① not used
 219001000
 ② HOLMES-WAYNE ELECTRIC COOPERATIVE, INC.
 219-838 1/15/1982
 1.0 ac p.8-852

LET IT BE KNOWN, THIS MAP HAS BEEN PREPARED AS A REFERENCE GUIDE TO PROPERTY OWNERSHIP. WE BELIEVE THIS INFORMATION TO BE CORRECT AND CURRENT, HOWEVER, IT IS NOT INTENDED FOR ANY LEGAL USE, WHETHER IT BE IN SALES, TRANSFERS, TRADES, LEASES OF ANY TYPE, ETC., AND DO NOT ACCEPT RESPONSIBILITY FOR ERRORS OF ANY NATURE OR OMISSIONS CONTAINED HEREIN.

Coshocton County

T-8, R-9, Sec. 23
 RICHLAND TWP.
 SCALE 1"=200'

Last Revision: 11/7/2008

R-11