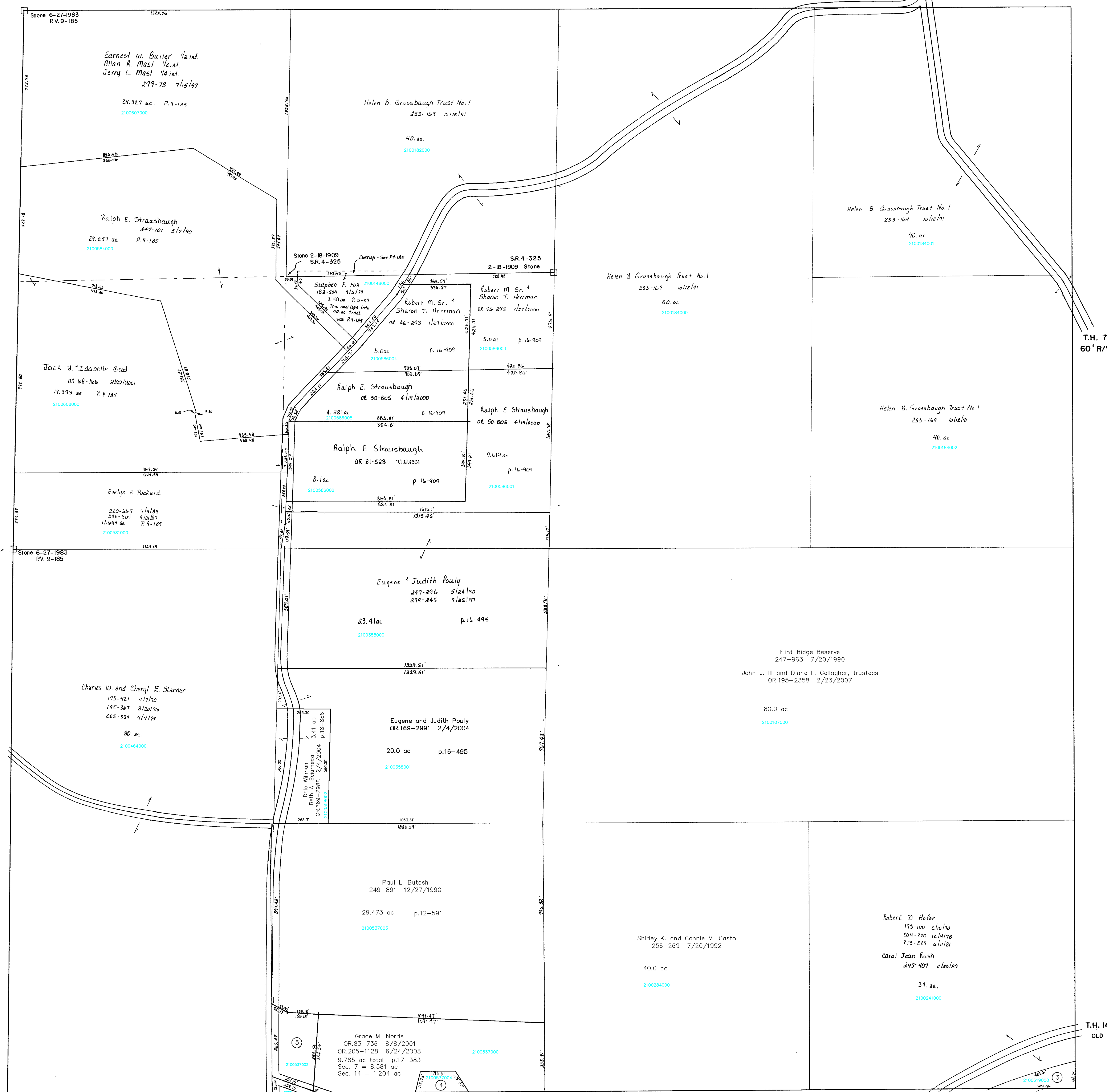


Section 4
R-10

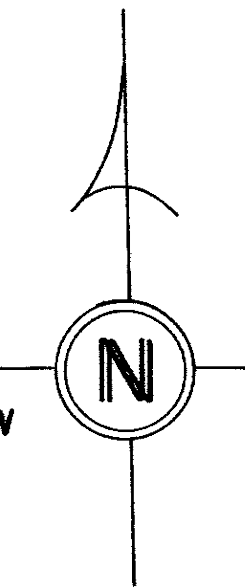
C.H. 75 60'R/W

Section 8
R-14

Section 6
R-4



T.H. 14 60'R/W
OLD T.H. 404



T.H. 14 60'R/W
OLD T.H. 404

T-8, R-9, Sec. 7
RICHLAND TWP.
SCALE 1"=200'

Last Revision: 6/24/2008

Section 14
R-8

CH. 75
60'R/W

T.H. 32
60'R/W
OLD T.H. 432

- 2100536001 ① Grace M. Norris
251-16 4/17/1991
OR.80-314 7/3/2001
OR.205-1128 6/24/2008
0.714 ac total p.13-39
Sec. 7 = 0.001 ac
Sec. 14 = 0.713 ac
- 2100536000 ② MATTINGLY VALORIE G.
OR.0177-1219 12/29/2004
0.212 ac p.13-49
- 2100619000 ③ The Board of Commissioners of the
Holmes County Park District
OR.191-1347 8/31/2006
0.854 ac p.2-281
- 2100537004 ④ ZIMMERMAN ELDORIS N.
OR.0683-713 8/8/2001
0.556 ac p.18-35
- 2100537002 ⑤ Grace M. Norris
245-573 12/7/1989
OR.80-318 7/3/2001
OR.205-1128 6/24/2008
1.896 ac p.13-49

LET IT BE KNOWN, THIS MAP HAS BEEN PREPARED AS A REFERENCE GUIDE TO PROPERTY OWNERSHIP. WE BELIEVE THIS INFORMATION TO BE CORRECT AND CURRENT, HOWEVER, IT IS NOT INTENDED FOR ANY LEGAL USE, WHETHER IT BE IN SALES, TRANSFERS, TRADES, LEASES OF ANY TYPE, ETC., AND DO NOT ACCEPT RESPONSIBILITY FOR ERRORS OF ANY NATURE OR OMISSIONS CONTAINED HEREIN.

