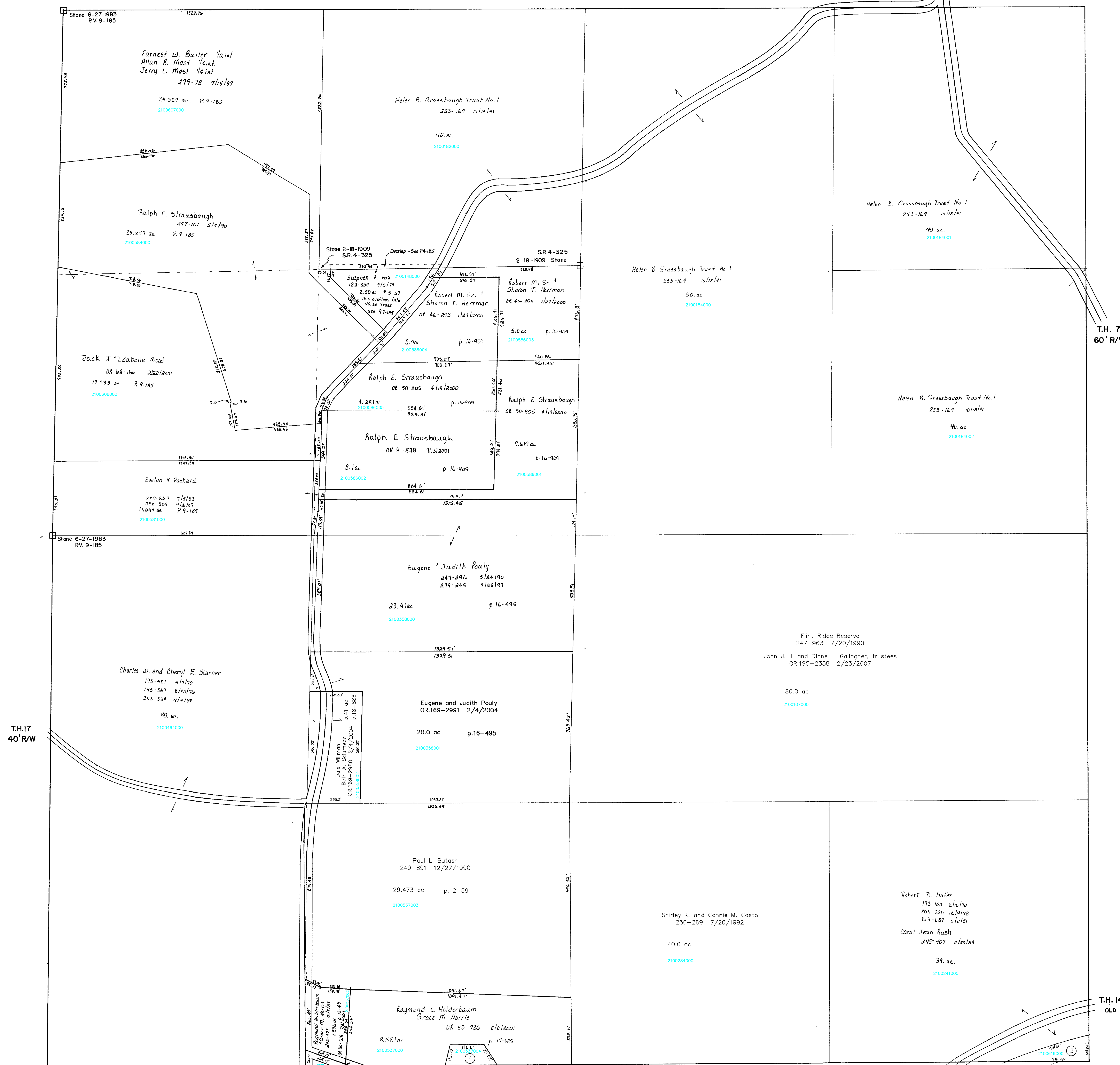


Section 4
R-10

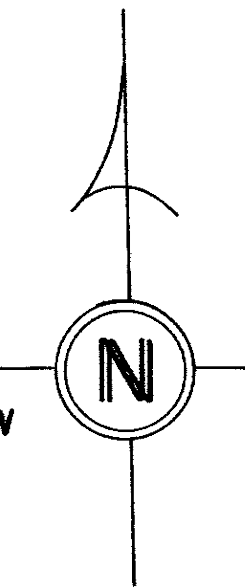
C.H. 75 60'R/W

Section 8
R-14

Section 6
R-4



T.H. 14 60'R/W
OLD T.H. 404

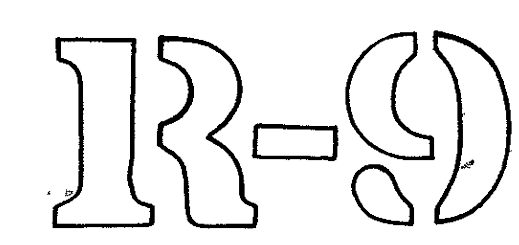


T.H. 14 60'R/W
OLD T.H. 404

T-8, R-9, Sec. 7
RICHLAND TWP.
SCALE 1"=200'

Last Revision: 3/23/2007

Section 14
R-8



- 2100536001 ① HOLDERBAUM, RAYMOND L.
NORRIS, GRACE M.
251-16 4/17/1991
OR.0080-314 7/3/2001
0.001 ac p.13-39
- 2100536000 ② MATTINGLY VALORE, C.
OR.0177-1219 12/29/2004
0.212 ac p.13-49
- 2100619000 ③ The Board of Commissioners of the
Holmes County Park District
OR.191-1347 8/31/2006
0.654 ac p.2-281
- 2100537004 ④ ZIMMERMAN ELDORIS N.
OR.0083-733 8/8/2001
0.556 ac p.18-35

C.H. 75
60' R/W

T.H. 32
60' R/W
OLD T.H. 432