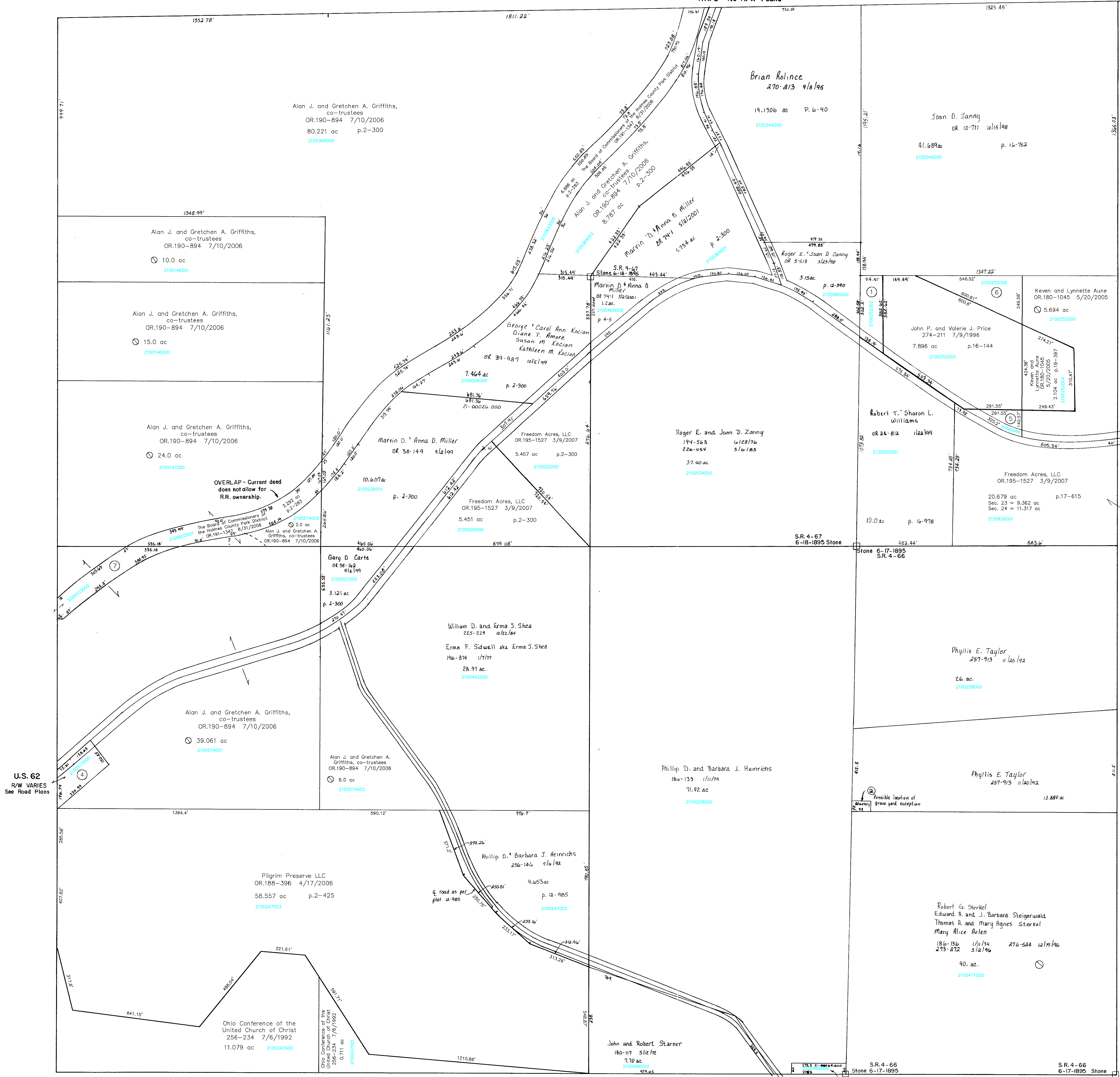


R-7
Section 17

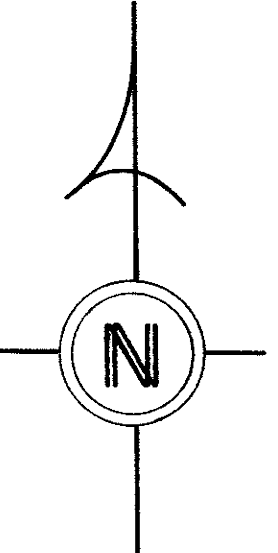
T.H. 5 No R/W Found



U.S. 62
R/W VARIES
See Road Plans

R-11
Section 23

U.S. 62
R/W VARIES
See Road Plans



- 2100252002 ① ZANNY JOAN D.
OR.0010-711 6/15/1998
0.9 ac p.16-144
- 2100469000 ③ STEIGERWALD EDWARD A. ETAL SEE DEED
188-136 1/11/1974
273-272 5/2/1996
276-524 12/19/1996
0.36 ac S.7.1. p.7-189
- 2100573000 ④ Alan J. and Gretchen A. Griffiths, co-trustees
OR.190-894 7/10/2006
0.939 ac p.10-74
- 2100252005 ⑤ John P. and Valerie J. Price
OR.180-1042 5/20/2005
0.536 ac p.19-387
- 2100252006 ⑥ John P. and Valerie J. Price
OR.180-1042 5/20/2005
1.566 ac p.19-387
- 2000103005 ⑦ The Board of Commissioners of the
Holmes County Park District
OR.191-1347 8/31/2006
1.238 ac p.2-283

Coshocton County

T.H. 9
30'/40' R/W
OLD T.H. 9

T-8, R-9, Sec. 24
RICHLAND TWP.
SCALE 1"=200'

Last Revision: 3/9/2007

LET IT BE KNOWN, THIS MAP HAS BEEN PREPARED AS A REFERENCE GUIDE TO PROPERTY OWNERSHIP. WE BELIEVE THIS INFORMATION TO BE CORRECT AND CURRENT; HOWEVER, IT IS NOT INTENDED FOR ANY LEGAL USE, WHETHER IT BE IN SALES, TRANSFERS, TRADES, LEASES OF ANY TYPE, ETC., AND DO NOT ACCEPT RESPONSIBILITY FOR ERRORS OF ANY NATURE OR OMISSIONS CONTAINED HEREIN.

R-6