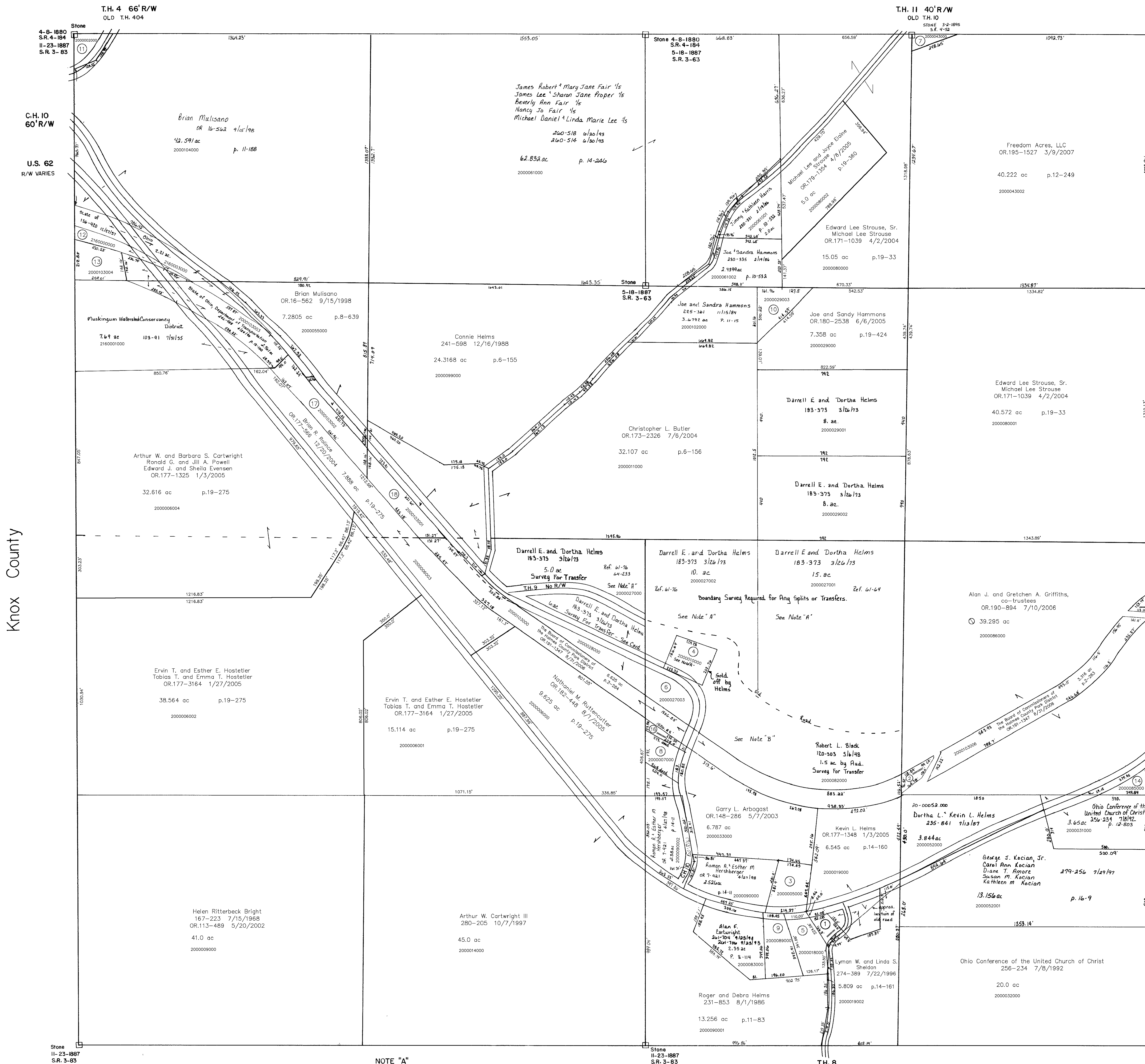


Section 16
R-2



- 2000051000 ① BERLIN PROPERTIES INC.
OR.0167-686 10/8/2003
0.276 ac p.10-780
- 2000103007 ② The Board of Commissioners of the
Holmes County Park District
OR.191-1347 8/31/2006
0.301 ac p.2-283
- 2000005000 ③ Wells Fargo
OR.198-3055 5/8/2007
1.18 ac p.14-592
- 2000010000 ④ Mezell Lyon
251-509 5/24/1991
273-524 6/13/1996
OR.198-2855 8/25/2007
1.0 ac p.8-680
- 2000018000 ⑤ Charles V. Wagner
OR.178-1267 2/18/2005
1.092 ac p.18-789
- 2000027003 ⑥ HELMS DARRELL E. AND DORTHA
183-373 3/26/1973
1.0 ac
- 2000043000 ⑦ MULLET LOLA M.
115-447 7/20/1945
218-296 8/17/1982
0.222 ac
- 2000007000 ⑧ BLUBAUGH DAVID AND PENNY
272-857 4/1/1996
1.0 ac
- 2000089000 ⑨ GRIFFITH JOHN R. AND EDNA M.
OR.0077-585 6/8/2001
1.19 ac p.8-114
- 2000029001 ⑩ HAMMONS JOE AND SANDRA
OR.0012-338 7/9/1998
1.0 ac p.16-785
- 2000002000 ⑪ Dorothy Gill Barnes
154-525 1/4/1965
OR.195-2143 8/21/2006
0.50 ac S.F.T.
- 2160000000 ⑫ MUSKINGUM WATERSHED CONSERVANCY
DISTRICT
103-105 8/6/1935
0.62 ac
- 2000103004 ⑬ The Board of Commissioners of the
Holmes County Park District
OR.191-1347 8/31/2006
1.017 ac p.2-284
- 2000085000 ⑭ Alan J. and Gretchen A. Griffiths, co-trustees
OR.190-894 7/10/2006
0.705 ac p.10-74
- 2000103005 ⑮ The Board of Commissioners of the
Holmes County Park District
OR.191-1347 8/31/2006
0.136 ac p.2-283
- 2000033001 ⑯ ARBOGAST GARRY L.
OR.0094-395 11/27/2001
0.213 ac p.18-132
- 2000103002 ⑰ The Board of Commissioners of the
Holmes County Park District
OR.191-1347 8/31/2006
1.52 ac p.2-284
- 2000103001 ⑱ The Board of Commissioners of the
Holmes County Park District
OR.191-1347 8/31/2006
1.189 ac p.2-284

Section 24
R-6

Knox County

U.S. 62
R/W VARIES

NOTE "A"
THE PROPERTIES OWNED BY DARRELL HELMS AND ROBERT BLACK HAVE VERY POOR DESCRIPTIONS. IT IS POSSIBLE THAT HELMS IS OCCUPYING LANDS WHICH ARE DESCRIBED ON BLACK'S DEED. BY RESEARCHING THESE PARCELS, IT WAS FOUND THAT THE ORIGINAL DEED DESCRIPTIONS LOCATED THESE TRACTS NORTH OF THE ROAD. FOR MORE INFORMATION, SEE PROPERTY CARD.

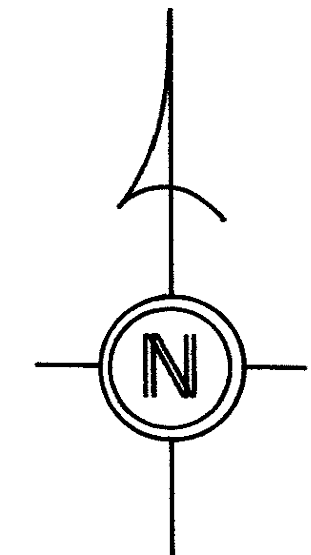
NOTE "B"
IT CAN NOT BE DETERMINED EXACTLY WHAT BLACK HAS LEFT, HOWEVER, RESEARCH INDICATES THERE IS MORE THAN 1.5 AC AS CARRIED ON THE TAX DUPLICATE. FOR MORE INFORMATION, SEE PROPERTY CARD.

Coshocton County

T-8, R-9, Sec. 25
RICHLAND TWP.
SCALE 1" = 200'

Last Revision: 8/3/2007

LET IT BE KNOWN, THIS MAP HAS BEEN PREPARED AS A REFERENCE GUIDE TO PROPERTY OWNERSHIP. WE BELIEVE THIS INFORMATION TO BE CORRECT AND CURRENT, HOWEVER, IT IS NOT INTENDED FOR ANY LEGAL USE, WHETHER IT BE IN SALES, TRANSFERS, TRADES, LEASES OF ANY TYPE, ETC., AND DO NOT ACCEPT RESPONSIBILITY FOR ERRORS OF ANY NATURE OR OMISSIONS CONTAINED HEREIN.



16-1