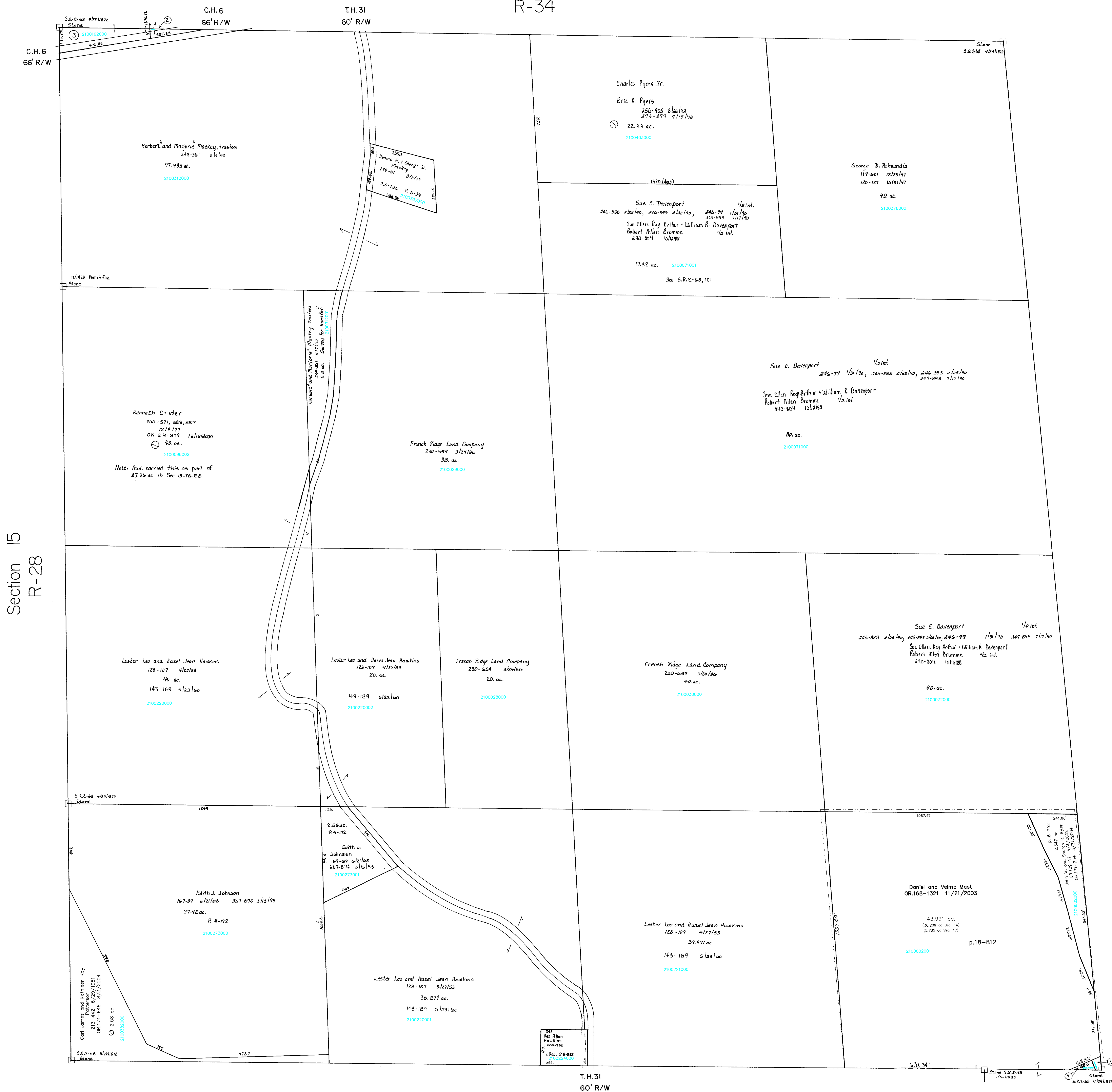
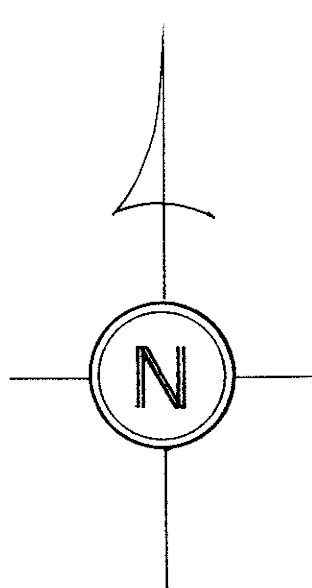


Section 7
R-34



Killbuck Twp.
K-3



- 2100302000 ① LINT RAYMOND L. AND TERESA
177-135 6/7/1971
0.05 ac p.5-84
- 2100310000 ② MACKAY MARJORIE E. AND HERBERT A. TRUSTEES
249-361 11/7/1990
0.163 ac p.6-114
- 2100162000 ③ Laura Roberto Reed
OR.186-2747 2/16/2006
0.986 ac p.6-114
- 2100302001 ④ LINT RAYMOND D.
236-348 9/2/1987
0.08 ac p.10-812

Section 17
R-32

T-8, R-8, Sec. 14
RICHLAND TWP.
SCALE 1" = 200'
Last Revision: 2/16/2006

LET IT BE KNOWN, THIS MAP HAS BEEN PREPARED AS A REFERENCE GUIDE TO PROPERTY OWNERSHIP. WE BELIEVE THIS INFORMATION TO BE CORRECT AND CURRENT, HOWEVER, IT IS NOT INTENDED FOR ANY LEGAL USE, WHETHER IT BE IN SALES, TRANSFERS, TRADES, LEASES OF ANY TYPE, ETC., AND DO NOT ACCEPT RESPONSIBILITY FOR ERRORS OF ANY NATURE OR OMISSIONS CONTAINED HEREIN.

R-333