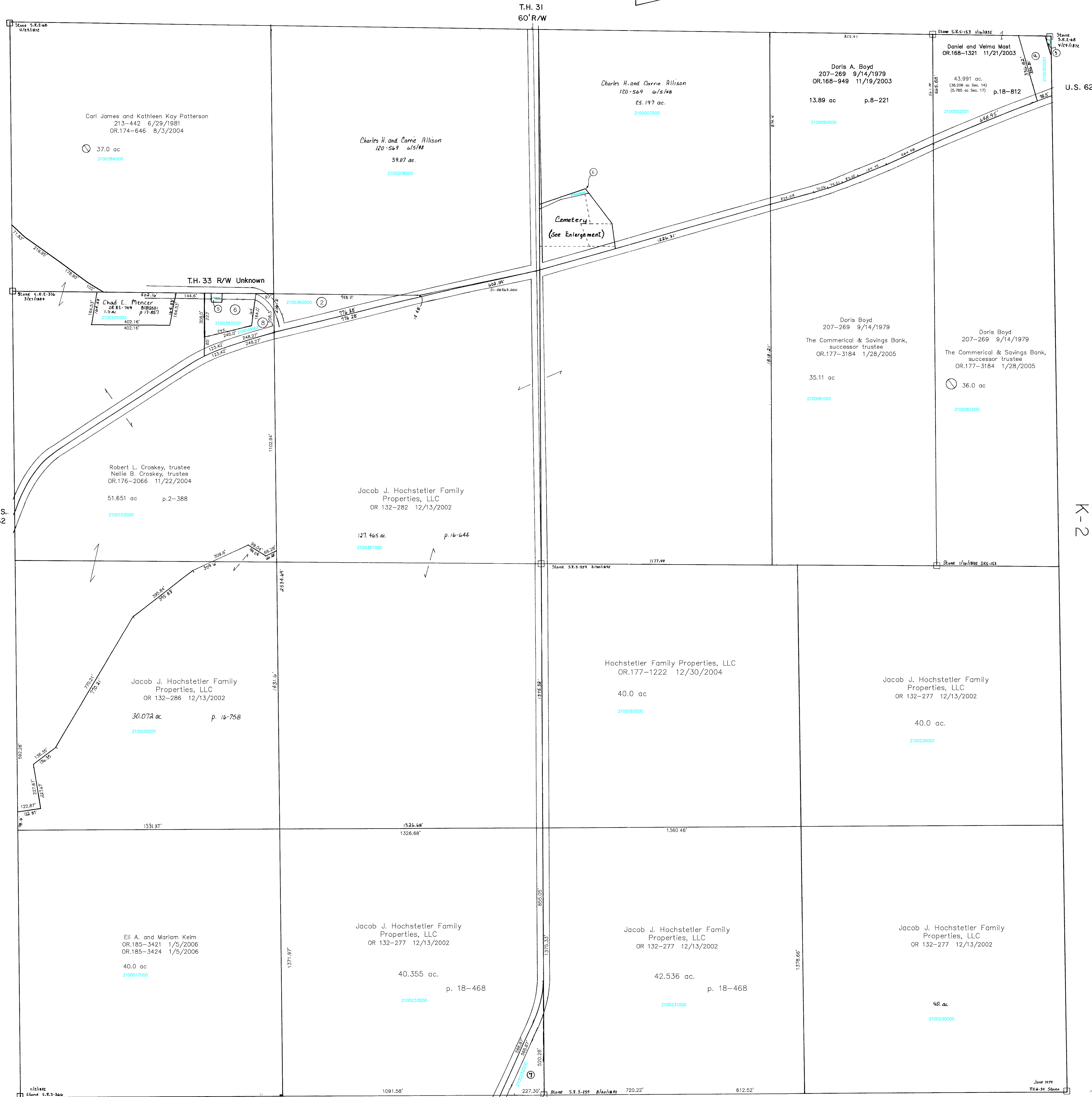
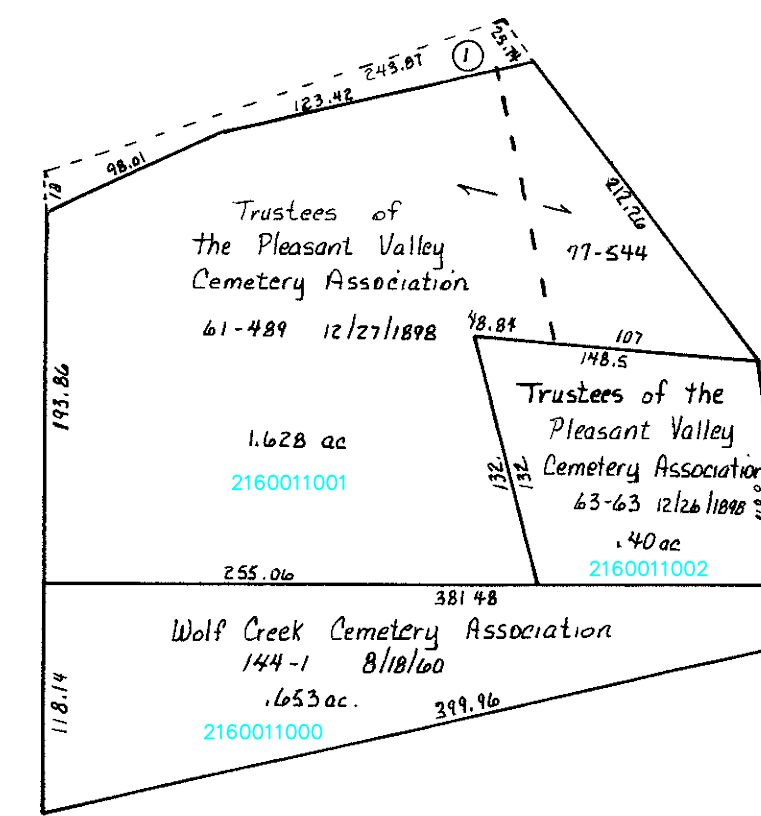


Section 14
R-33



Section 16
R-27

Killbuck Twp.
K-2

210009000 ①	ALLISON CHARLES H. AND CARRIE L. 144-3 8/18/1960 0.122 ac	2100383001 ⑤	PATTERSON STACY LYNN AND MIMI J. OR 0174-648 8/3/2004 0.050 ac p.17-571
2100360000 ②	JACOB HOCHSTETLER FAMILY PROPERTIES, LLC OR 0132-282 12/13/2002 1.905 ac p.16-644	2100383000 ⑥	PATTERSON STACY LYNN AND MIMI J. OR 0174-648 8/3/2004 0.945 ac S.F.T.
2100302000 ③	LINT RAYMOND L. AND TERESA 177-135 6/7/1971 0.029 ac p.5-34	2100232000 ⑦	JACOB J. HOCHSTETLER FAMILY PROPERTIES, LLC OR 0132-277 12/13/2002 1.357 ac p.18-468
2100302001 ④	LINT RAYMOND D. 236-348 9/2/1987 0.871 ac p.10-812	2100105003 ⑧	PATTERSON STACY LYNN AND MIMI J. OR 0176-2064 11/22/2004 0.956 ac p.2-388

Section 24
R-31

T-8, R-8, Sec. 17
RICHLAND TWP.

SCALE 1" = 200'

Last Revision: 1/5/2006

LET IT BE KNOWN, THIS MAP HAS BEEN PREPARED AS A REFERENCE GUIDE TO PROPERTY OWNERSHIP. WE BELIEVE THIS INFORMATION TO BE CORRECT AND CURRENT, HOWEVER, IT IS NOT INTENDED FOR ANY LEGAL USE, WHETHER IT BE IN SALES, TRANSFERS, TRADES, LEASES OF ANY TYPE, ETC., AND DO NOT ACCEPT RESPONSIBILITY FOR ERRORS OF ANY NATURE OR OMISSIONS CONTAINED HEREIN.

