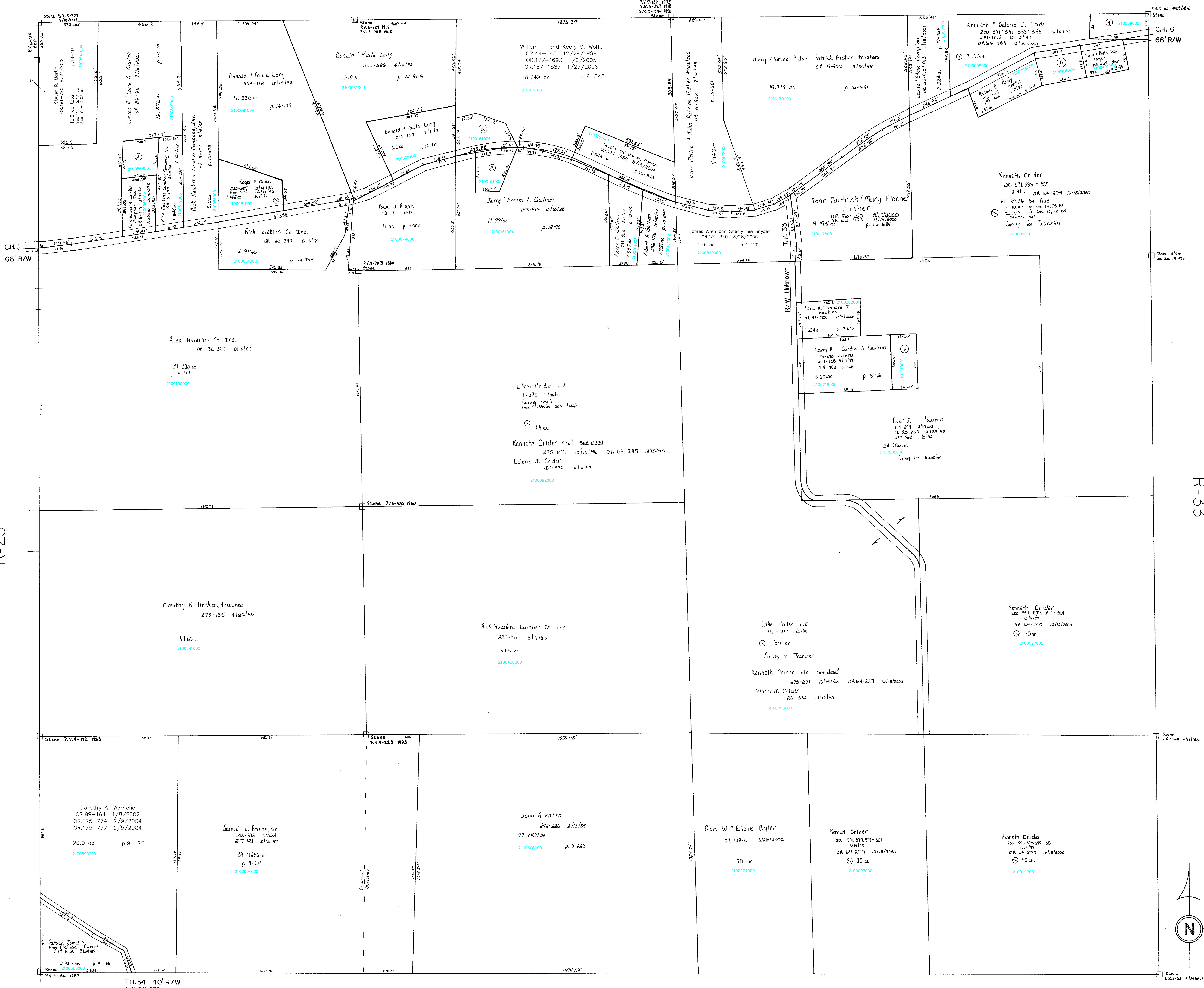


Section 6
R-29



Section 14
R-33

R-23

- 2100219001 ① LYDIC CHAD AND JENNIFER
280-658 11/5/1997
0.999 ac p.16-571
- 2100568000 ② RICK HAWKINS LUMBER COMPANY, INC.
OR.0005-177 3/18/1998
1.0 ac p.8-816
- 2100161005 ③ GALLON CHRISTOPHER M. AND CHRYSAL D.
OR.0056-839 8/10/2000
1.0 ac p.17-602
- 2100096001 ④ CRIDER KENNETH
200-571 12/9/1977
200-583 12/9/1977
200-587 12/9/1977
OR.0064-279 12/18/2000
1.0 ac S.E.T.
- 2100161006 ⑤ WOLFE, JAMES M. SR.
CALBRAITH, JACQUELINE D.
OR.0109-410 4/8/2002
1.306 ac p.16-253
- 2100101000 ⑥ Jeffrey A. Crider
OR.180-1140 7/13/2006
1.06 ac p.3-55

Section 16
R-27

Last Revision: 8/24/2006
T-8, R-8, Sec. 15
RICHLAND TWP.
SCALE 1" = 200'

LET IT BE KNOWN, THIS MAP HAS BEEN PREPARED AS A REFERENCE GUIDE TO PROPERTY OWNERSHIP. WE BELIEVE THIS INFORMATION TO BE CORRECT AND CURRENT, HOWEVER, IT IS NOT INTENDED FOR ANY LEGAL USE, WHETHER IT BE IN SALES, TRANSFERS, TRADES, LEASES OF ANY TYPE, ETC., AND DO NOT ACCEPT RESPONSIBILITY FOR ERRORS OF ANY NATURE OR OMISSIONS CONTAINED HEREIN.

R-28