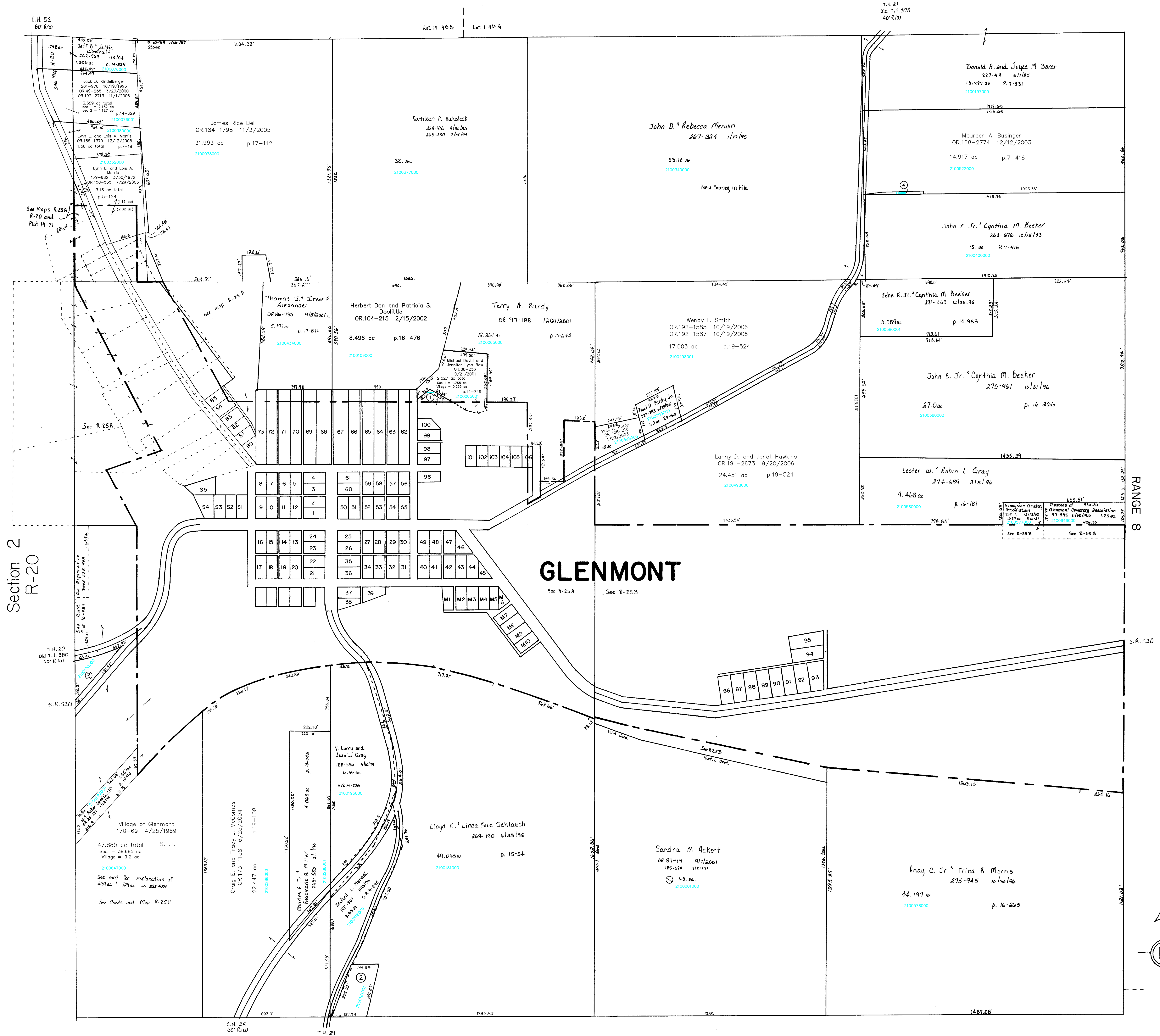


Knox Twp.
KX-19



Section 2
R-20

Section 5
R-30

RANGE 8

GLENMONT

Section 10
R-24

- 210065002 ① REW MICHAEL DAVID AND JENNIFER LYNN
OR.0088-256 9/21/2001
0.834 ac total
0.1250 ac in Twp. 0.511 ac in Village
p.16-69
- 2100181001 ② SCHLAUCH TYLER E.
OR.0168-2505 12/9/2003
1.073 ac p.16-802
- 2100153000 ③ FASIG ROBERT S. AND JANET I.
OR.0150-88 5/21/2003
1.4 ac p.16-794
- 2100522001 ④ John E. Jr. and Cynthia M. Becker
OR.183-3213 10/12/2005
0.083 ac p.19-523

T-8, R-9, Sec. 1
RICHLAND TWP.
SCALE 1" = 200'
Last Revision: 11/1/2006

LET IT BE KNOWN, THIS MAP HAS BEEN PREPARED AS A REFERENCE GUIDE TO PROPERTY OWNERSHIP. WE BELIEVE THIS INFORMATION TO BE CORRECT AND CURRENT, HOWEVER, IT IS NOT INTENDED FOR ANY LEGAL USE, WHETHER IT BE IN SALES, TRANSFERS, TRADES, LEASES OF ANY TYPE, ETC. AND DO NOT ACCEPT RESPONSIBILITY FOR ERROR OF ANY NATURE OR OMISSIONS CONTAINED HEREIN.

R-25