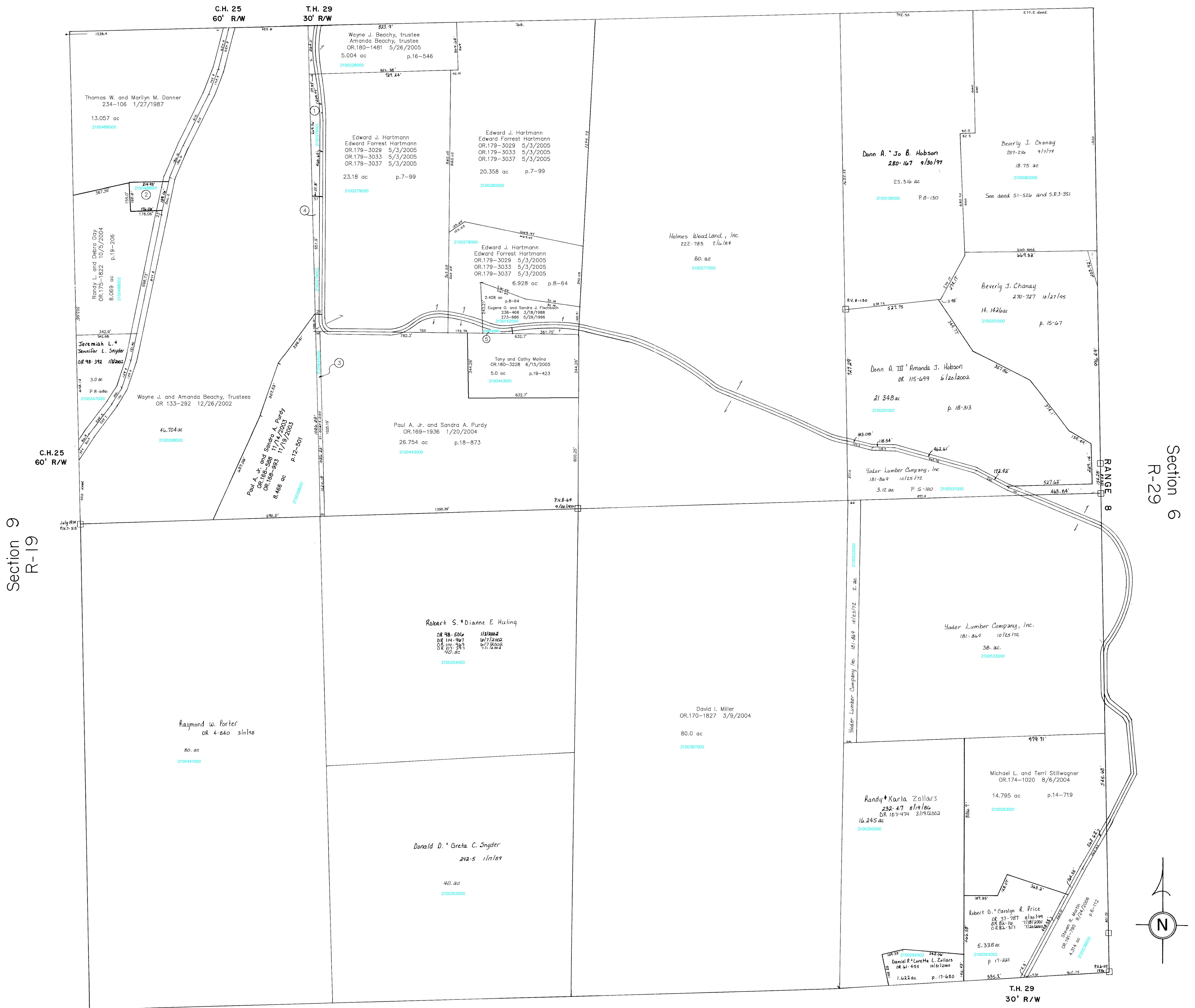


Section I  
R-25



- 2100279001 ① BEACHY WAYNE J. AND AMANDA TRUSTEES  
OR.0133-292 12/26/2002  
0.976 ac p.12-548
- 2100488001 ② Richard B. Schaub  
OR.178-708 2/11/2005  
0.704 ac p.14-65
- 2100645000 ③ HULING ROBERT S. AND DIANNE E.  
OR.0098-506 1/3/2002  
OR.0114-987 6/7/2002  
OR.0114-969 6/7/2002  
OR.0117-597 7/1/2002  
0.589 ac p.18-305
- 2100279002 ④ Wayne J. Beachy, trustee  
Amanda Beachy, trustee  
OR.180-1481 5/26/2005  
0.663 ac p.19-126
- 2100142001 ⑤ Tony and Cathy Molino  
OR.181-179 6/21/2005  
0.082 ac p.19-432

Section II  
R-23

T-8, R-9, Sec. 10  
RICHLAND TWP.  
SCALE 1" = 200'

Last Revision: 8/24/2006

LET IT BE KNOWN, THIS MAP HAS BEEN PREPARED AS A REFERENCE GUIDE TO PROPERTY OWNERSHIP. WE BELIEVE THIS INFORMATION TO BE CORRECT AND CURRENT, HOWEVER, IT IS NOT INTENDED FOR ANY LEGAL USE, WHETHER IT BE IN SALES, TRANSFERS, TRADES, LEASES OF ANY TYPE, ETC., AND DO NOT ACCEPT RESPONSIBILITY FOR ERRORS OF ANY NATURE OR OMISSIONS CONTAINED HEREIN.

R-24