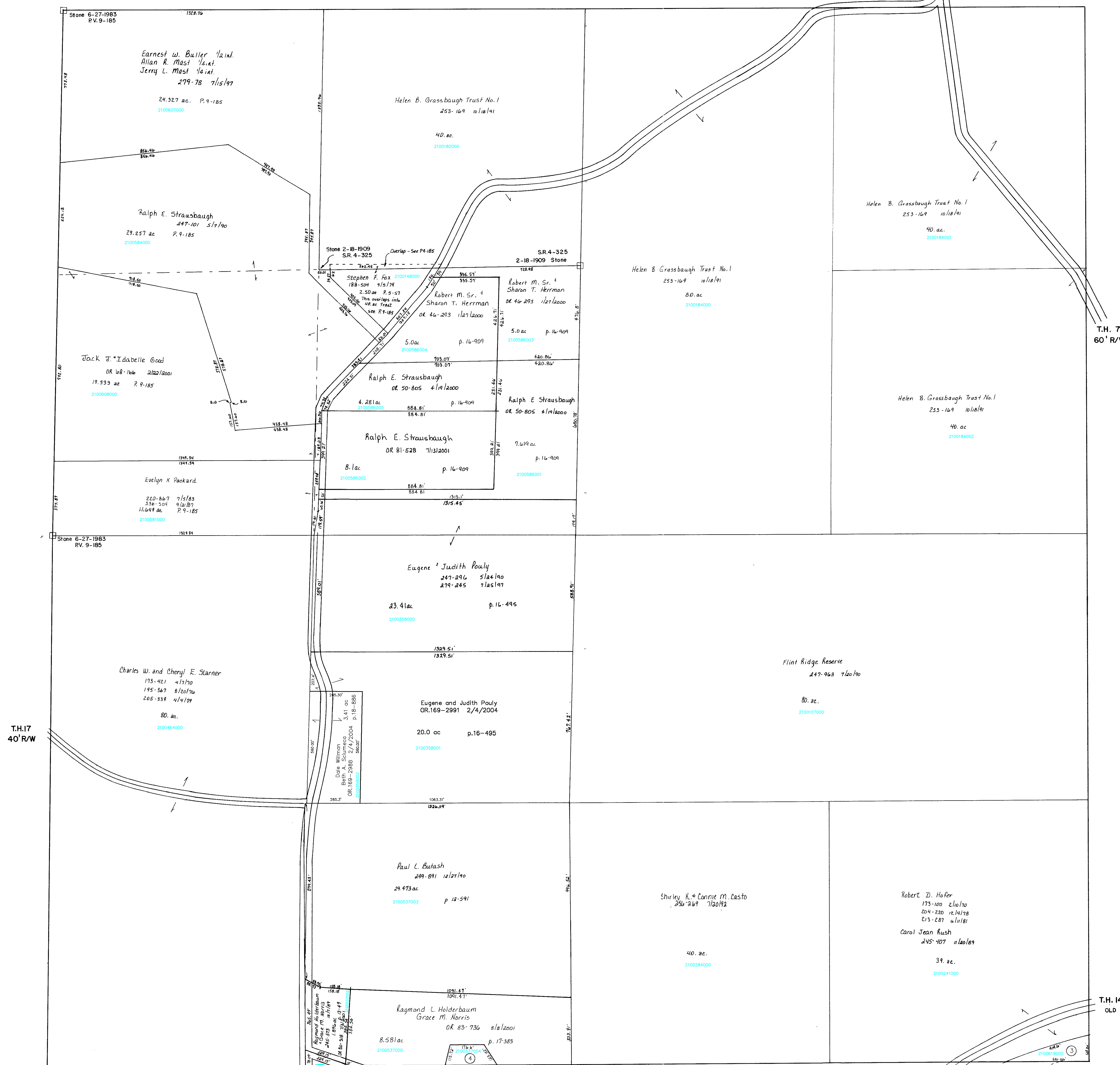


Section 4
R-10

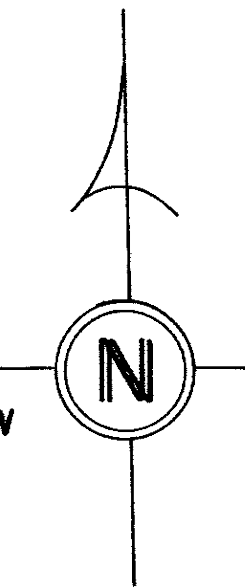
C.H. 75 60'R/W

Section 8
R-14

Section 6
R-4



T.H. 14 60'R/W
OLD T.H. 404

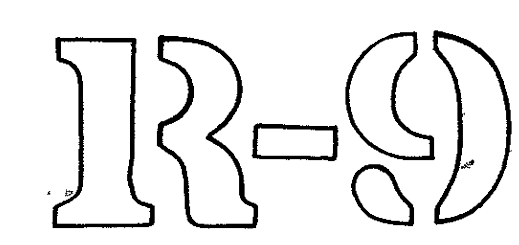


T.H. 14 60'R/W
OLD T.H. 404

T-8, R-9, Sec. 7
RICHLAND TWP.
SCALE 1"=200'

Last Revision: 8/31/2006

LET IT BE KNOWN, THIS MAP HAS BEEN PREPARED AS A REFERENCE GUIDE TO PROPERTY OWNERSHIP. WE BELIEVE THIS INFORMATION TO BE CORRECT AND CURRENT. HOWEVER, IT IS NOT INTENDED FOR ANY LEGAL USE, WHETHER IT BE IN SALES, TRANSFERS, TRADES, LEASES OF ANY TYPE, ETC., AND DO NOT ACCEPT RESPONSIBILITY FOR ERRORS OF ANY NATURE OR OMISSIONS CONTAINED HEREIN.



- 2100536001 ① HOLDERBAUM, RAYMOND L. NORRIS, GRACE M. 251-16 4/17/1991 OR.0080-314 7/3/2001 0.001 ac p.13-39
- 2100536000 ② MATTINGLY VALORIE G. OR.0177-1219 12/29/2004 0.212 ac p.13-49
- 2100619000 ③ The Board of Commissioners of the Holmes County Park District OR.191-1347 8/31/2006 0.654 ac p.2-281
- 2100537004 ④ ZIMMERMAN ELDORIS N. OR.0083-733 8/8/2001 0.556 ac p.18-35

Section 14
R-8

C.H. 75 60' R/W

T.H. 32 60' R/W
OLD T.H. 432