

Section 7
R-9

C.H.75 60'R/W

T.H. 32 60'R/W
OLD T.H. 432

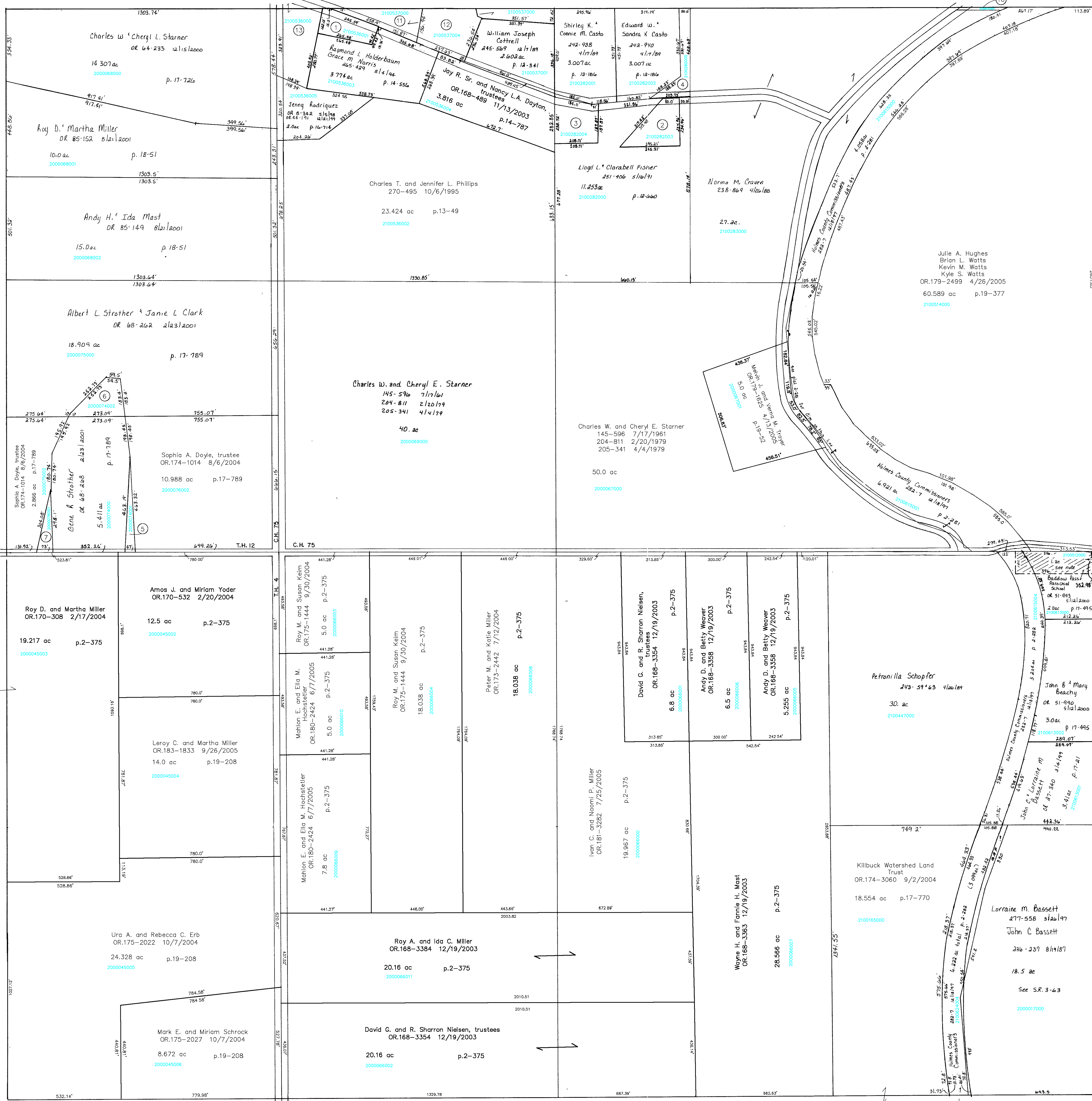
T.H.14 60'R/W
OLD T.H. 404

Section 15
R-3

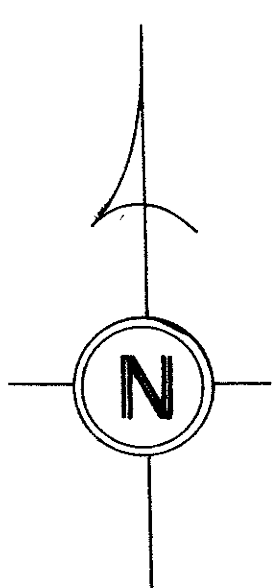
T.H. 12
30'R/W

Section 13
R-13

C.H.75 30'R/W



NOTE: Overlap Possible Explanation
John Marks sold this one ac. as part of the deed description to the Mill Road in deed 51-043. His heirs were not aware of this and later sold it again as part of the J.A. Marks estate on deed 71-476, which leads to Robert Watts.



T.H.4 60'R/W OLD T.H. 404	
2100536001 ①	HOLDERBAUM, RAYMOND L. NORRIS, GRACE M. 251-18 4/17/1991 OR.0080-314 7/3/2001 0.713 ac p.13-39
2100282003 ②	HAWKINS, PHILL L. CONDREN, ROBERT C. JR. 243-505 5/26/1989 OR.0027-183 3/2/1999 1.0 ac p.12-224
2100282004 ③	FISHER LLOYD L. AND CLARABELL 235-1012 6/22/1992 1.0 ac p.12-659
2100282005 ④	CASTO EDWARD W. AND SANDRA K. 268-975 6/8/1995 0.972 ac p.12-660
2000074001 ⑤	DOYLE SOPHIA A. TRUSTEE OR.0174-1014 8/8/2004 0.25 ac p.17-789
2000076001 ⑥	STROTHER, ALBERT L. CLARK, JANIE L. OR.0068-266 2/23/2001 0.728 ac p.17-789
2000076001 ⑦	STROTHER GENE R. OR.0068-250 2/23/2001 0.25 ac p.17-789
2100512000 ⑧	Baddow Pass Parochial School OR.179-2497 4/26/2005 1.0 ac S.F.T.
⑨	Not used
2100631000 ⑩	Julie A. Hughes; Brian L. Watts Kevin M. Watts; Kyle S. Watts OR.179-2499 4/26/2005 0.1198 ac p.19-376
2100537000 ⑪	HOLDERBAUM, RAYMOND L. NORRIS, GRACE M. OR.0083-736 8/8/2001 1.204 ac p.17-383
2100537004 ⑫	ZIMMERMAN ELDORIS N. OR.0083-733 8/8/2001 1.374 ac p.18-35
2100536000 ⑬	MATTINGLY VALORIE G. OR.0177-1219 12/29/2004 1.479 ac p.13-40

Section 17
R-7

T-8, R-9, Sec. 14
RICHLAND TWP.
SCALE 1"=200'

LET IT BE KNOWN, THIS MAP HAS BEEN PREPARED AS A REFERENCE GUIDE TO PROPERTY OWNERSHIP. WE BELIEVE THIS INFORMATION TO BE CORRECT AND CURRENT, HOWEVER, IT IS NOT INTENDED FOR ANY LEGAL USE, WHETHER IT BE IN SALES, TRANSFERS, TRADES, LEASES OF ANY TYPE, ETC., AND DO NOT ACCEPT RESPONSIBILITY FOR ERRORS OF ANY NATURE OR OMISSIONS CONTAINED HEREIN.

Last Revision: 9/26/2005

R-8