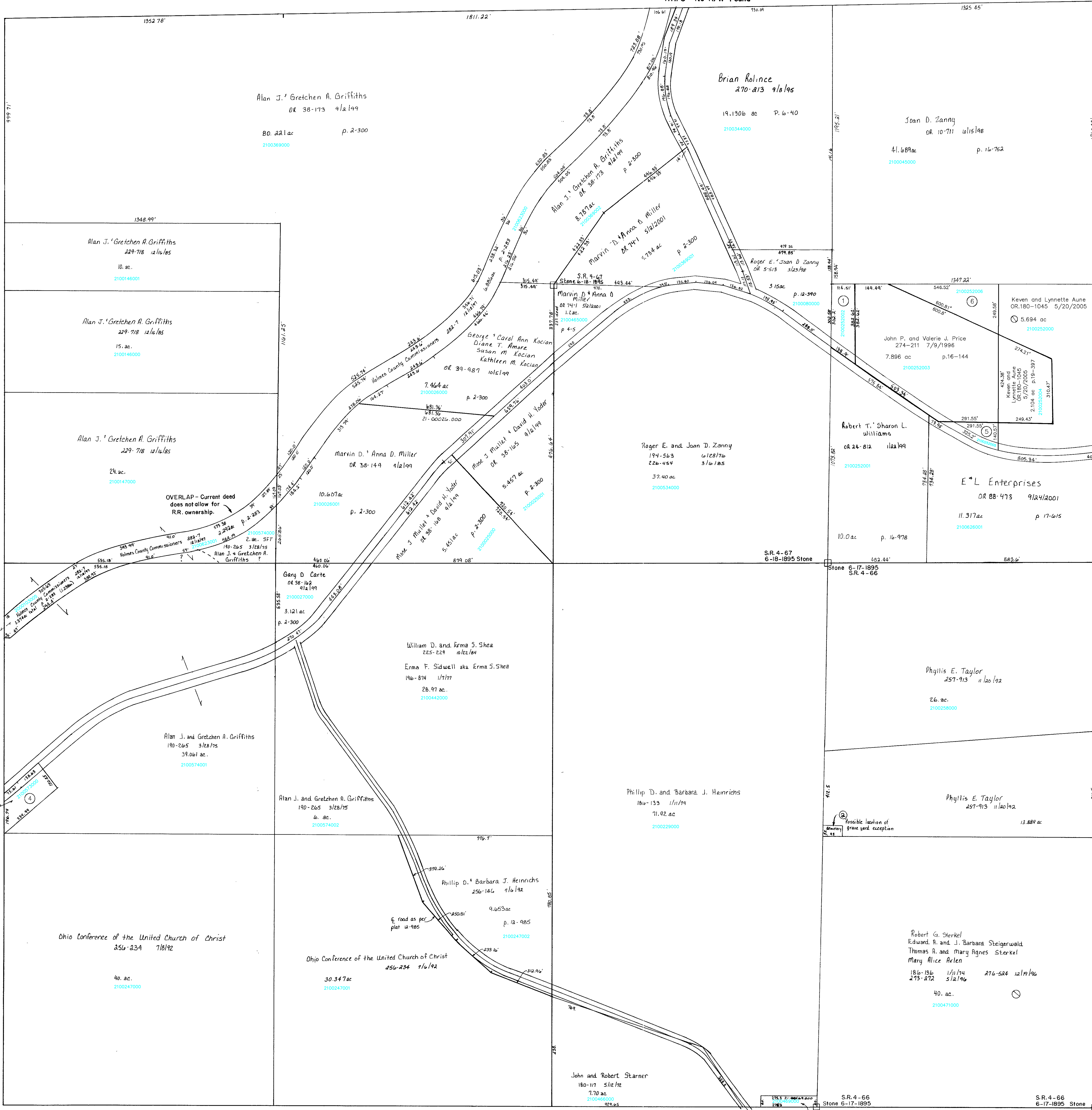


R-7  
Section 17

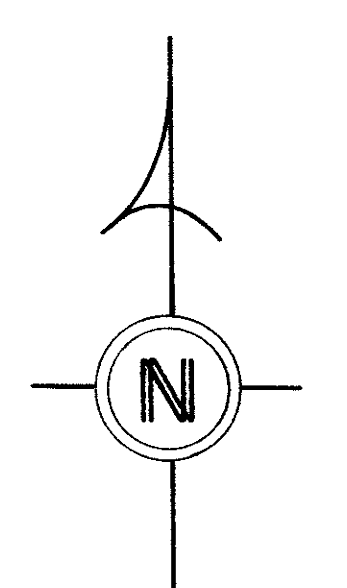
T.H. 5 No R/W Found



U.S. 62  
R/W VARIES  
See Road Plans

R-11  
Section 23

U.S. 62  
R/W VARIES  
See Road Plans



- 2100252002 ① ZANNY JOAN D.  
OR.0010-711 6/15/1998  
0.9 ac. p.16-144
- ② DEVORE WILLIAM LAST KNOWN OWNER  
52-147 9/26/1888  
0.111 ac
- 2100469000 ③ STEIGERWALD EDWARD A. ETAL SEE DEED  
188-136 1/11/1974  
273-272 5/2/1996  
276-524 12/19/1996  
0.38 ac. p.7-189
- 2100573000 ④ GRIFFITHS ALAN J. AND GRETCHEN A.  
233-71 10/28/1986  
0.939 ac p.10-74
- 2100252005 ⑤ John P. and Valerie J. Price  
OR.180-1042 5/20/2005  
0.536 ac. p.19-387
- 2100252006 ⑥ John P. and Valerie J. Price  
OR.180-1042 5/20/2005  
1.566 ac. p.19-387

T.H. 9  
30'/40' R/W  
OLD T.H. 9

Coshocton County

T-8, R-9, Sec. 24  
RICHLAND TWP.  
SCALE 1"=200'

Last Revision: 5/20/2005

LET IT BE KNOWN, THIS MAP HAS BEEN PREPARED AS A REFERENCE GUIDE TO PROPERTY OWNERSHIP. WE BELIEVE THIS INFORMATION TO BE CORRECT AND CURRENT; HOWEVER, IT IS NOT INTENDED FOR ANY LEGAL USE, WHETHER IT BE IN SALES, TRANSFERS, TRADES, LEASES OF ANY TYPE, ETC., AND DO NOT ACCEPT RESPONSIBILITY FOR ERRORS OF ANY NATURE OR OMISSIONS CONTAINED HEREIN.

R-6