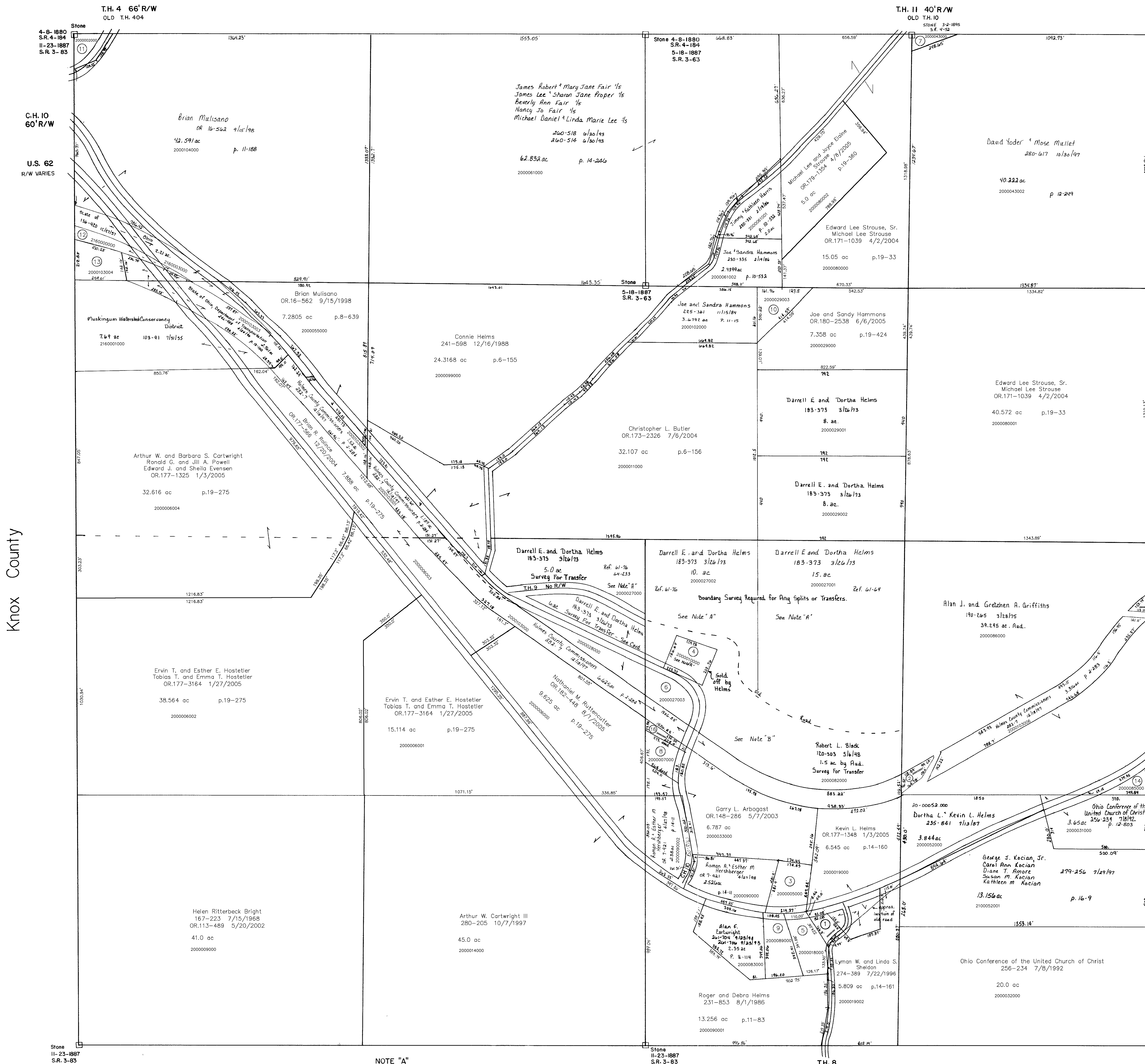


Section 16
R-2



Knox County

Section 24
R-6

- 2000051000 ① BERLIN PROPERTIES INC.
05.0167-886 10/8/2003
0.275 ac p.10-760
- 2000103007 ② HOLMES COUNTY COMMISSIONERS
282-7 12/18/1997
0.301 ac p.2-283
- 2000005000 ③ SANFORD ROBERT LEO AND ROSE MARIE
OR.0001-851 1/16/1998
1.18 ac p.14-592
- 2000010000 ④ LYON MOZELL
251-509 5/24/1991
273-924 6/13/1996
1.0 ac p.8-680
- 2000018000 ⑤ Charles V. Wagner
OR.178-1267 2/18/2005
1.092 ac p.18-789
- 2000027003 ⑥ HELMS DARRELL E. AND DORTHA
183-373 3/26/1973
1.0 ac
- 2000043000 ⑦ MULLET LOLA M.
115-447 7/20/1945
218-296 6/17/1982
0.222 ac
- 2000007000 ⑧ BLUBAUGH DAVID AND PENNY
272-857 4/1/1996
p.18-300
- 2000089000 ⑨ GRIFFITH JOHN R. AND EDNA M.
OR.0077-585 6/8/2001
1.19 ac p.8-114
- 2000029001 ⑩ HAMMONS JOE AND SANDRA
OR.0012-338 7/9/1998
1.0 ac p.16-785
- 2000002000 ⑪ BARNES MARSHALL H. AND DOROTHY G.
154-525 1/4/1965
0.50 ac
- 2160000000 ⑫ MUSKINGUM WATERSHED CONSERVANCY
DISTRICT
103-105 8/6/1935
0.62 ac
- 2000103004 ⑬ HOLMES COUNTY COMMISSIONERS
282-7 12/18/1997
1.017 ac p.2-284
- 2000085000 ⑭ GRIFFITHS ALAN J. AND GRETCHEN A.
233-71 10/28/1986
0.705 ac p.10-74
- 2000103005 ⑮ HOLMES COUNTY COMMISSIONERS
282-7 12/18/1997
0.136 ac p.2-283
- 2000033001 ⑯ ARBOGAST GARRY L.
OR.0084-395 11/27/2001
0.213 ac p.18-132

NOTE "A"
THE PROPERTIES OWNED BY DARRELL HELMS AND ROBERT BLACK HAVE VERY POOR DESCRIPTIONS. IT IS POSSIBLE THAT HELMS IS OCCUPYING LANDS WHICH ARE DESCRIBED ON BLACK'S DEED. BY RESEARCHING THESE PARCELS, IT WAS FOUND THAT THE ORIGINAL DEED DESCRIPTIONS LOCATED THESE TRACTS NORTH OF THE ROAD. FOR MORE INFORMATION, SEE PROPERTY CARD.

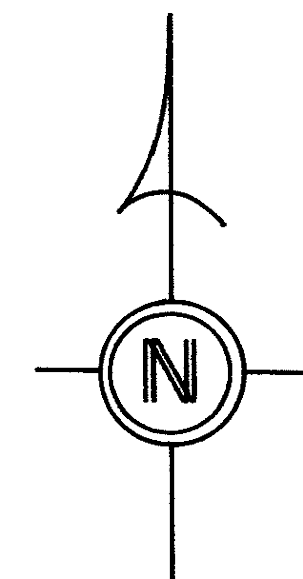
NOTE "B"
IT CAN NOT BE DETERMINED EXACTLY WHAT BLACK HAS LEFT, HOWEVER, RESEARCH INDICATES THERE IS MORE THAN 1.5 AC AS CARRIED ON THE TAX DUPLICATE. FOR MORE INFORMATION, SEE PROPERTY CARD.

Coshocton County

T-8, R-9, Sec. 25
RICHLAND TWP.
SCALE 1" = 200'

Last Revision: 8/1/2005

LET IT BE KNOWN, THIS MAP HAS BEEN PREPARED AS A REFERENCE GUIDE TO PROPERTY OWNERSHIP. WE BELIEVE THIS INFORMATION TO BE CORRECT AND CURRENT. HOWEVER, IT IS NOT INTENDED FOR ANY LEGAL USE, WHETHER IT BE IN SALES, TRANSFERS, TRADES, LEASES OF ANY TYPE, ETC., AND DO NOT ACCEPT RESPONSIBILITY FOR ERRORS OF ANY NATURE OR OMISSIONS CONTAINED HEREIN.



16-1