

Section 16  
R-27

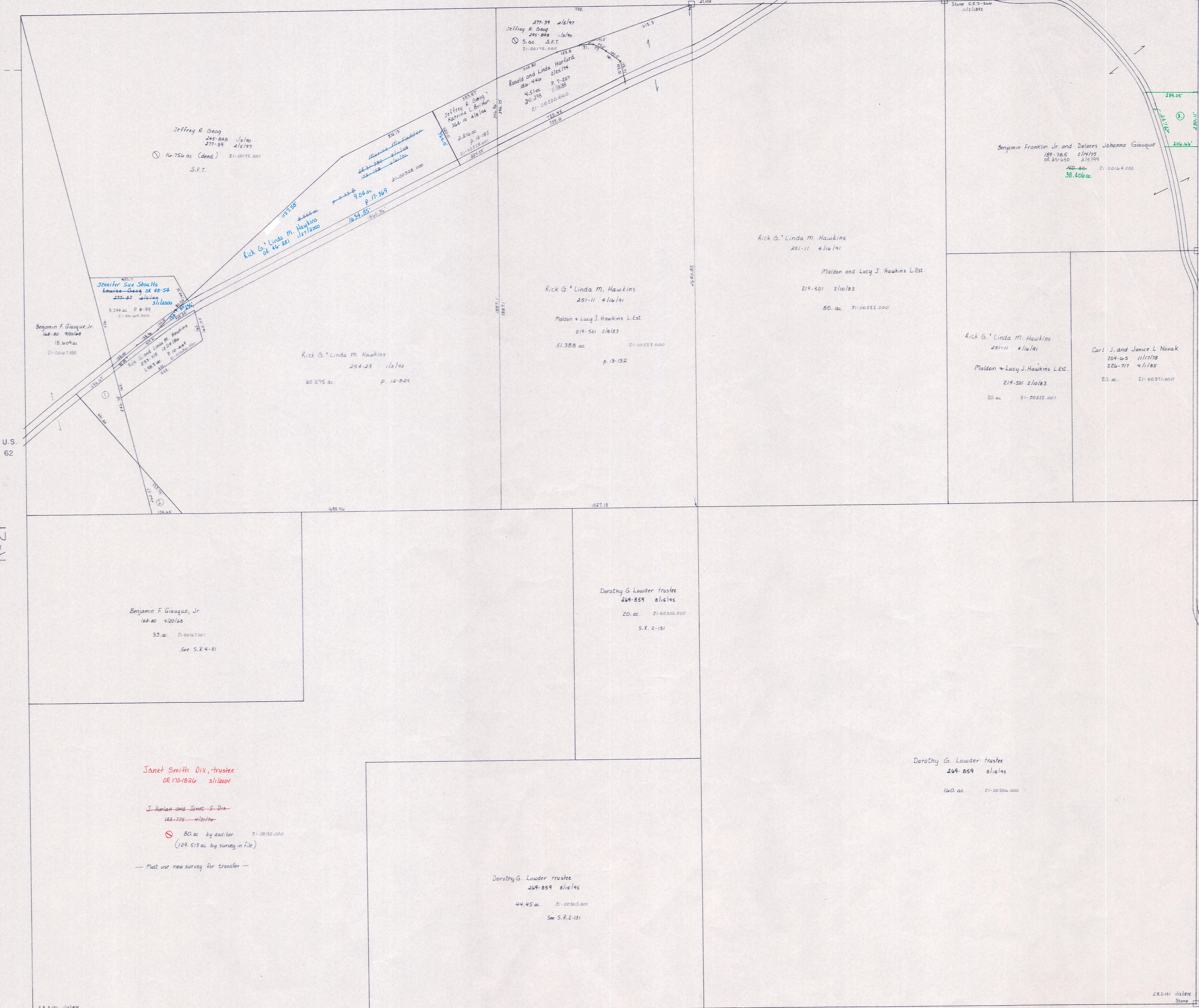
1

U.S. 62

T.H. 28 40' R/W

S.R. 2-104 11/21/84  
Stone

S.R. 2-104 (Sec. 16 file)  
Stone



Section 21  
R-21

Section 24  
R-31

T.H. 28  
40' R/W

Coshocton County

T-8, R-8, Sec. 25  
RICHLAND TWP.

SCALE 1" = 200'

LET IT BE KNOWN, THIS MAP HAS BEEN PREPARED AS A REFERENCE GUIDE TO PROPERTY OWNERSHIP. WE BELIEVE THIS INFORMATION TO BE CORRECT AND CURRENT, HOWEVER, IT IS NOT INTENDED FOR ANY LEGAL USE, WHETHER IT BE IN SALES, TRANSFERS, TRADES, LEASES OF ANY TYPE, ETC., AND DO NOT ACCEPT RESPONSIBILITY FOR ERRORS OF ANY NATURE OR OMISSIONS CONTAINED HEREIN.

R-26

S.E. Corner  
Sec. 16 T8R27

- ⊙ Rick G. & Linda M. Hawkins of 22-281 11/19/84 p. 14-94
- ⊙ Benjamin F. Giauque, Jr. of 32-302 11/14/84 p. 14-80

Janet Smith Dix, trustee  
OR 170-1826 3/11/80

J. Harlan and Janet S. Dix  
143-775 4/12/78

⊙ 80 ac by auditor 21-00130.000  
(109.573 ac by survey in file)

— Must use new survey for transfer —